

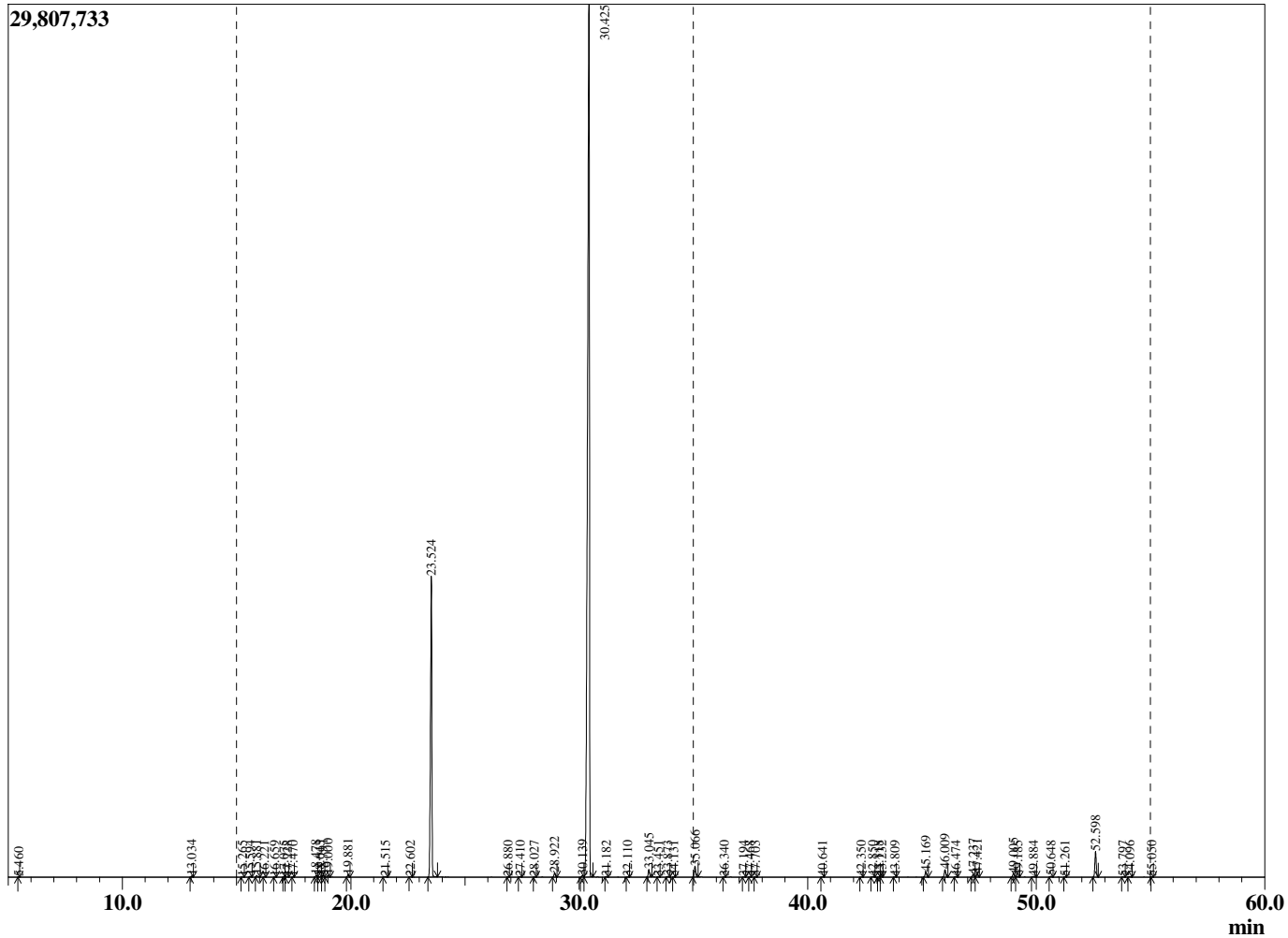
Sample Information

Analyzed : 1/30/2020 6:59:17 PM
 Sample Type : Essential Oil
 Sample Name : Ocimum basilicum
 Injection Volume : 0.10

Basil Methyl Chavicol
 Lot# USH7-HC
 Country: USA



Chromatogram Ocimum basilicum



R.Time	Name	Area%
4.236	3-Methylbutanal	0.01
4.349	2-Methylbutanal	0.00
5.460	1-Pentanol	0.00
13.034	alpha-Pinene	0.06
15.265	Sabinene	0.02
15.594	beta-Pinene	0.05
15.881	6-Methyl hept-5-en-2-one	0.11
16.221	Myrcene	0.03
16.659	3-Octanol	0.01
17.075	Octanal	0.01
17.228	1,3,8-para-Menthatriene	0.02
17.470	delta-3-Carene	0.01
18.478	para-Cymene	0.09
18.643	2-Ethyl hexanol	0.03
18.791	Limonene	0.11
19.000	1,8-cineole	0.11
19.881	trans-beta-Ocimene	0.15
21.515	cis-Linalool oxide (furanoid)	0.05
22.602	trans-Linalool oxide (furanoid)	0.02
23.524	Linalool	18.31
26.880	trans-Chrysanthemal	0.01
27.410	Menthone	0.03
28.027	Isomenthone	0.01
28.922	Menthol	0.25
30.139	alpha-Terpineol	0.11
30.425	Estragole	75.59
31.182	Octyl acetate	0.02
32.110	Nerol	0.02
33.045	Neral	0.46
33.451	Carvone	0.01
33.873	Geraniol	0.04
34.131	Unidentified	0.01
35.066	Geranial	0.66
36.340	(E)-Anethole	0.01
37.194	Unidentified	0.02
37.468	Unidentified	0.01
37.703	Unidentified	0.01
40.641	Eugenol	0.02
42.350	alpha-Copaene	0.02
42.850	Unidentified	0.05
43.118	7-epi-Sesquithujene	0.02
43.232	beta-Elemene	0.02
43.809	Methyleugenol	0.02
45.169	beta-Caryophyllene	0.35
46.009	trans-alpha-Bergamotene	0.49
46.474	cis-beta-Farnesene	0.04
47.237	trans-beta-Farnesene	0.16
47.421	alpha-Humulene	0.19
49.005	Germacrene D	0.25
49.185	Unidentified	0.07
49.884	Bicyclogermacrene	0.06
50.648	beta-Bisabolene	0.06
51.261	delta-Cadinene	0.02
52.598	trans-alpha-Bisabolene	1.63
53.797	trans-Nerolidol	0.01
54.096	para-Methoxycinnamaldehyde	0.04

R.Time	Name
55.050	Caryophyllene oxide

Area%
0.01
100.00