

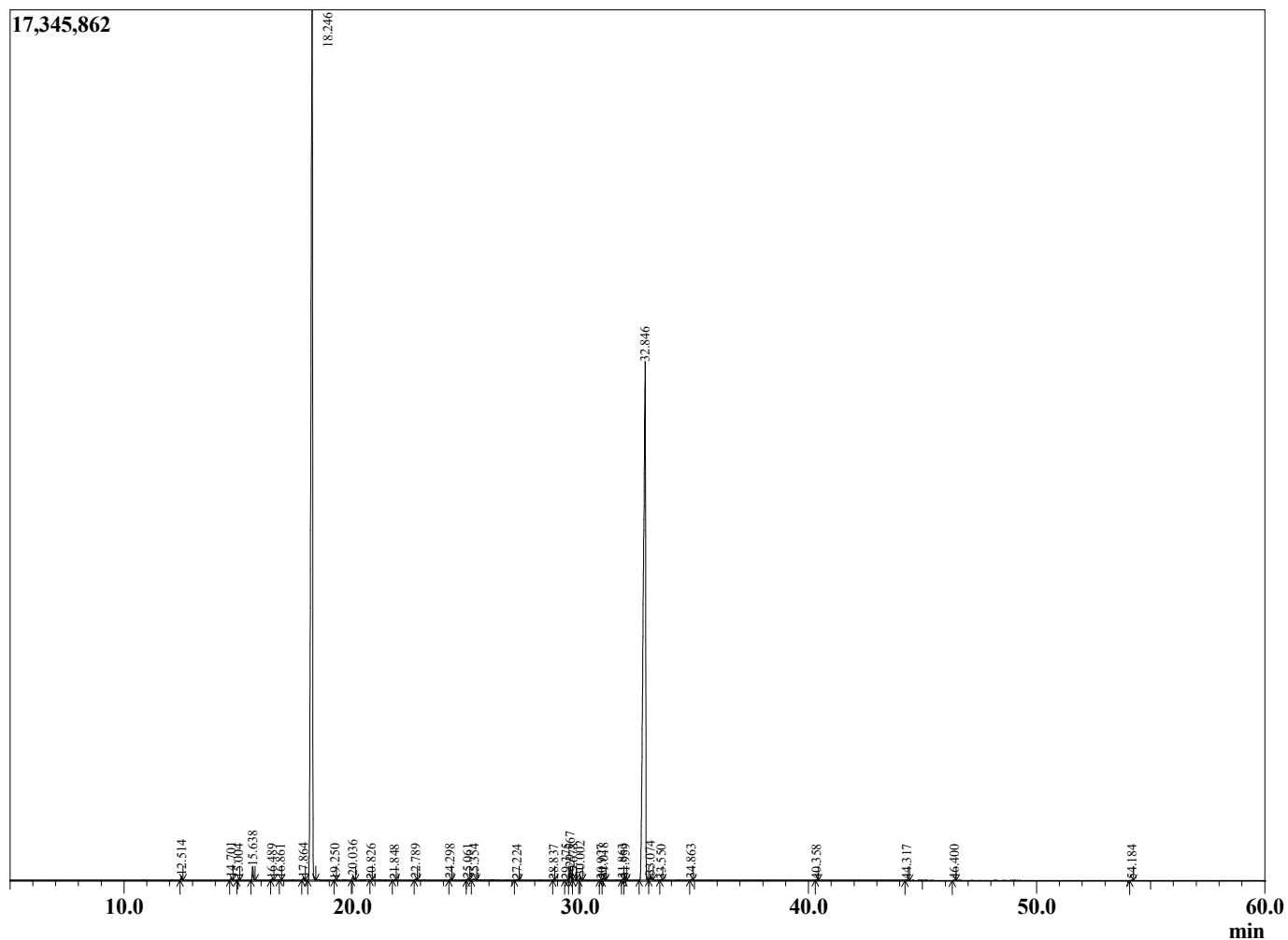
Sample Information

Sample Type : Essential Oil  
 Sample Name : Carum carvi  
 Injection Volume : 0.10

Caraway Seed  
 Lot# EGC14-CK  
 Country: Egypt



Chromatogram Carum carvi



R.Time	Name	Area%
12.514	alpha-Pinene	0.14
14.701	Sabinene	0.08
15.004	beta-Pinene	0.03
15.638	Myrcene	0.53
16.489	Octanal	0.05
16.861	delta-3-Carene	0.02
17.864	para-Cymene	0.09
18.246	Limonene	53.71
19.250	trans-beta-Ocimene	0.01
20.036	gamma-Terpinene	0.17
20.826	Unidentified	0.01
21.848	Unidentified	0.01
22.789	Linalool	0.05
24.298	trans-para-Mentha-2,8-dienol	0.03
25.061	trans-Limonene oxide	0.04
25.354	cis-Limonene oxide	0.07
27.224	Unidentified	0.02
28.837	Unidentified	0.01
29.375	Unidentified	0.03
29.567	cis-Dihydrocarvone	0.61
29.678	Unidentified	0.04
30.002	trans-Dihydrocarvone	0.14
30.927	Unidentified	0.02
31.018	trans-Carveol	0.07
31.863	Neoisodihydrocarveol	0.03
31.959	cis-Carveol	0.04
32.846	Carvone	43.64
33.074	Carvotanacetone	0.17
33.550	Unidentified	0.02
34.863	Perillaldehyde	0.04
40.358	Neryl acetate	0.02
44.317	beta-Caryophyllene	0.02
46.400	Unidentified	0.01
54.184	Unidentified	0.01
		100.00