

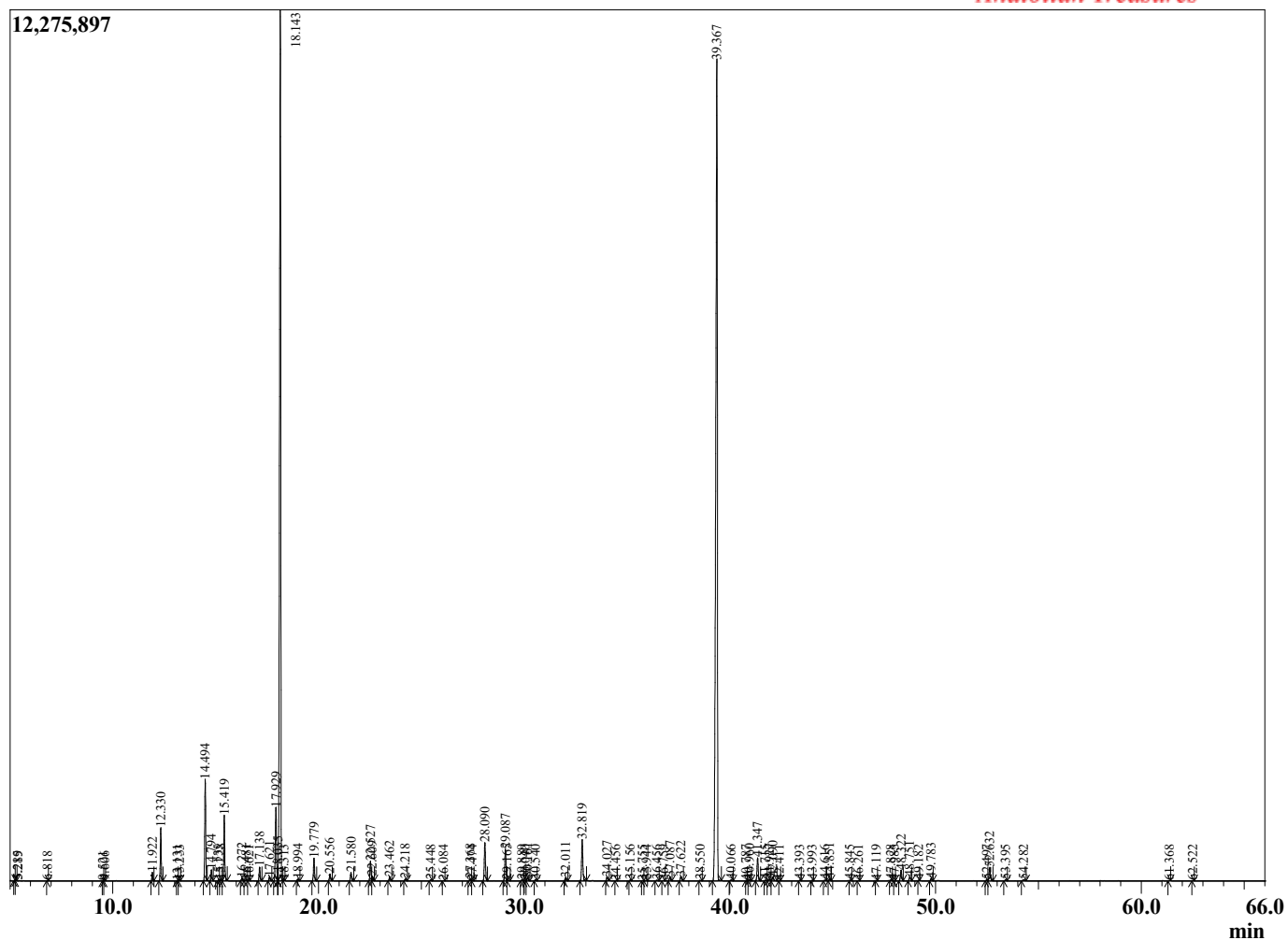
Sample Information

Sample Type : Essential Oil
 Sample Name : Elettaria cardamomum
 Injection : 0.10
 Volume :

Cardamom
 Lot# IDF14-FH
 Country: India



Chromatogram Elettaria cardamomum



R.Time	Name	Area%
4.067	3-Methylbutanal	0.02
4.173	2-Methylbutanal	0.01
5.219	Isopentyl alcohol	0.01
5.285	2-Methyl butanol	0.01
6.818	Hexanal	0.01
9.521	Isopentyl acetate	0.01
9.606	2-Methylbutyl acetate	0.01
11.922	alpha-Thujene	0.25
12.330	alpha-Pinene	1.59
13.131	alpha-Fenchene	0.01
13.233	Camphene	0.03
14.494	Sabinene	3.21
14.794	beta-Pinene	0.35
15.135	6-Methyl hept-5-en-2-one	0.03
15.228	Methyl pentanoate	0.04
15.419	Myrcene	2.17
16.272	Octanal	0.10
16.481	alpha-Phellandrene	0.04
16.621	delta-3-Carene	0.02
17.138	alpha-Terpinene	0.48
17.621	para-Cymene	0.15
17.929	Limonene	2.92
18.035	beta-Phellandrene	0.08
18.143	1,8-Cineole	34.27
18.313	(Z)-beta-Ocimene	0.02
18.994	(E)-beta-Ocimene	0.06
19.779	gamma-Terpinene	0.81
20.556	trans-Sabinene hydrate	0.27
21.580	Terpinolene	0.31
22.527	Linalool	0.74
22.609	cis-Sabinene hydrate	0.15
23.462	Unidentified	0.15
24.218	cis-para-Menth-2-en-1-ol	0.07
25.448	trans-para-Menth-2-en-1-ol	0.03
26.084	Unidentified	0.01
27.368	delta-Terpineol	0.08
27.474	Borneol	0.02
28.090	Terpinen-4-ol	1.51
29.087	alpha-Terpineol	1.28
29.165	trans-Piperitol	0.04
29.889	Decanal	0.04
30.040	cis-Piperitol	0.02
30.161	Octyl acetate	0.11
30.540	cis-Sabinene hydrate acetate	0.04
32.011	Neral	0.12
32.819	Linalyl acetate + Geraniol	1.75
34.027	Geraniol	0.16
34.456	cis-Ascrinol glycol	0.01
35.156	Bornyl acetate	0.02
35.755	2-Undecanone	0.01
35.944	4-Terpinyl acetate	0.02
36.456	alpha-Terpinyl formate	0.03
36.759	Methyl decenoate isomer	0.02
37.087	delta-Terpinyl acetate	0.18
37.622	Methyl geranate	0.19
38.550	delta-Elementene	0.02

R.Time	Name	Area%
39.367	alpha-Terpinyl acetate	42.86
40.066	Neryl acetate	0.04
40.787	alpha-Ylangene	0.00
40.960	Methyl decenoate isomer	0.05
41.347	Geranyl acetate	0.96
41.715	Unidentified	0.03
41.927	Tetradecenyl acetate isomer	0.07
42.090	beta-Elemene	0.20
42.411	Unidentified	0.01
43.393	Decyl acetate	0.02
43.993	trans-beta-Caryophyllene	0.02
44.616	gamma-Elemene	0.04
44.851	Terpinyl propionate	0.08
45.845	Unidentified	0.02
46.261	Unidentified	0.01
47.119	Unidentified	0.01
47.828	Germacrene D	0.03
47.985	Unidentified	0.00
48.322	beta-Selinene	0.47
48.751	alpha-Selinene	0.17
49.182	delta-Amorphene	0.01
49.783	gamma-Cadinene	0.10
52.497	Germacrene B	0.04
52.632	(E)-Nerolidol	0.58
53.395	Dendrolasin	0.04
54.282	Unidentified	0.05
61.368	(2E,6E)-Farnesol	0.01
62.522	Farnesal isomer	0.01
		100.00