

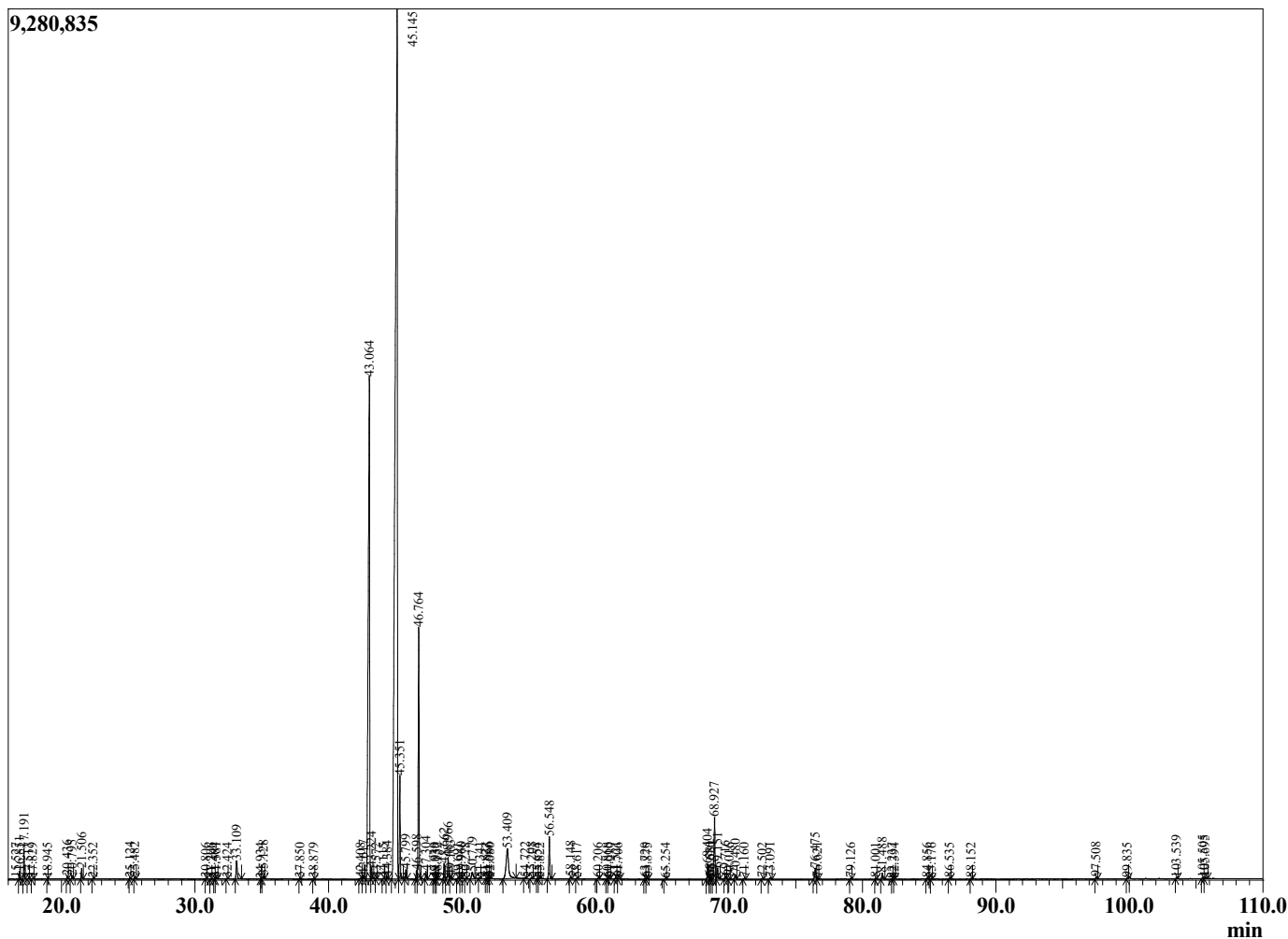
Sample Information

Sample Type : Essential Oil
 Sample Name : Nepeta cataria
 Injection Volume : 0.10



Catnip
 Lot# CAX13-XE
 Country: Canada

Chromatogram Nepeta cataria



R.Time	Name	Area%
5.079	3-Methylbutanal	0.04
5.207	2-Methylbutanal	0.02
5.742	2-Ethylfuran	0.05
7.168	Senecionitrile	0.06
7.534	Methyl 2-methylbutyrate	0.02
8.325	Hexanal	0.02
9.236	1,3,6-Octatriene	0.01
10.407	Hex-(2E)-enal	0.06
12.271	Styrene	0.03
14.092	alpha-Thujene	0.02
14.546	alpha-Pinene	0.68
15.527	Camphene	0.02
16.851	Sabinene	0.14
17.191	beta-Pinene	0.59
17.517	3-Octanone	0.02
17.829	2-Pentyl furan	0.02
18.945	alpha-Phellandrene	0.01
20.436	Limonene	0.06
20.795	(Z)-beta-Ocimene	0.08
21.506	(E)-beta-Ocimene	0.22
22.352	gamma-Terpinene	0.02
25.124	Linalool	0.03
25.482	Nonanal	0.05
30.806	Terpinen-4-ol	0.01
31.206	Dill ether	0.02
31.464	Hexyl butyrate	0.02
31.581	Methyl salicylate	0.03
32.424	Unidentified	0.02
33.109	Unidentified	0.66
34.934	Unidentified	0.01
35.128	Carvone	0.08
37.850	Bornyl acetate	0.02
38.879	Tridecane	0.02
42.408	Unidentified	0.04
42.617	Unidentified	0.10
43.064	4a-alpha,7-alpha,7a-alpha-Nepetalactone	20.66
43.224	Nepetalactone isomer	0.33
43.572	Unidentified	0.02
44.115	Unidentified	0.03
44.384	Hex-(3Z)-enyl hex-(3Z)-enoate	0.06
45.145	4a-alpha,7-alpha,7a-beta-Nepetalactone	56.61
45.351	4a-alpha-7-beta,7a-alpha-Nepetalactone	2.45
45.799	cis-beta-Caryophyllene	0.22
46.598	Unidentified	0.22
46.764	trans-beta-Caryophyllene	6.46
47.304	Unidentified	0.20
47.939	cis, trans-Iridolactone	0.02
48.030	Unidentified	0.02
48.152	Unidentified	0.03
48.662	(E)-beta-Farnesene	0.39
48.966	alpha-Humulene	0.60
49.163	Unidentified	0.08
49.691	Unidentified	0.04
49.960	Unidentified	0.03
50.278	(E)-beta-Ionone	0.02
50.779	Unidentified	0.35

R.Time	Name	Area%
51.341	Unidentified	0.02
51.827	(E,E)-alpha-Farnesene	0.01
51.966	Dehydromenthofuro lactone	0.04
52.080	Unidentified	0.02
53.409	Unidentified	2.21
54.722	Unidentified	0.03
55.208	Unidentified	0.04
55.654	Unidentified	0.02
55.822	(3Z)-Hexenyl benzoate	0.02
56.548	Caryophyllene oxide	1.19
58.148	Humulene epoxide II	0.06
58.617	Unidentified	0.02
60.206	Unidentified	0.02
60.868	Unidentified	0.02
61.010	Unidentified	0.03
61.521	Unidentified	0.05
61.706	Unidentified	0.03
63.720	Unidentified	0.02
63.875	Pentadecanal	0.04
65.254	Unidentified	0.03
68.404	Unidentified isomer I	0.40
68.581	Unidentified	0.08
68.620	Unidentified	0.05
68.927	Unidentified isomer I	1.80
69.151	Unidentified	0.32
69.716	Unidentified isomer I	0.07
70.016	Unidentified	0.02
70.480	Phytone	0.13
71.160	Unidentified	0.03
72.502	Unidentified	0.03
73.091	Unidentified isomer I	0.06
76.475	Unidentified isomer I	0.34
76.621	13-Heptadecyn-1-ol	0.04
79.126	Unidentified	0.03
81.001	Unidentified	0.03
81.488	Unidentified	0.18
82.237	Unidentified	0.01
82.394	Unidentified	0.01
84.856	Unidentified	0.03
85.176	Unidentified	0.01
86.535	Unidentified	0.03
88.152	Unidentified	0.02
97.508	Unidentified	0.05
99.835	Unidentified	0.02
103.539	Unidentified isomer II	0.04
105.505	Unidentified isomer II	0.04
105.695	Unidentified isomer II	0.05
		100.00