

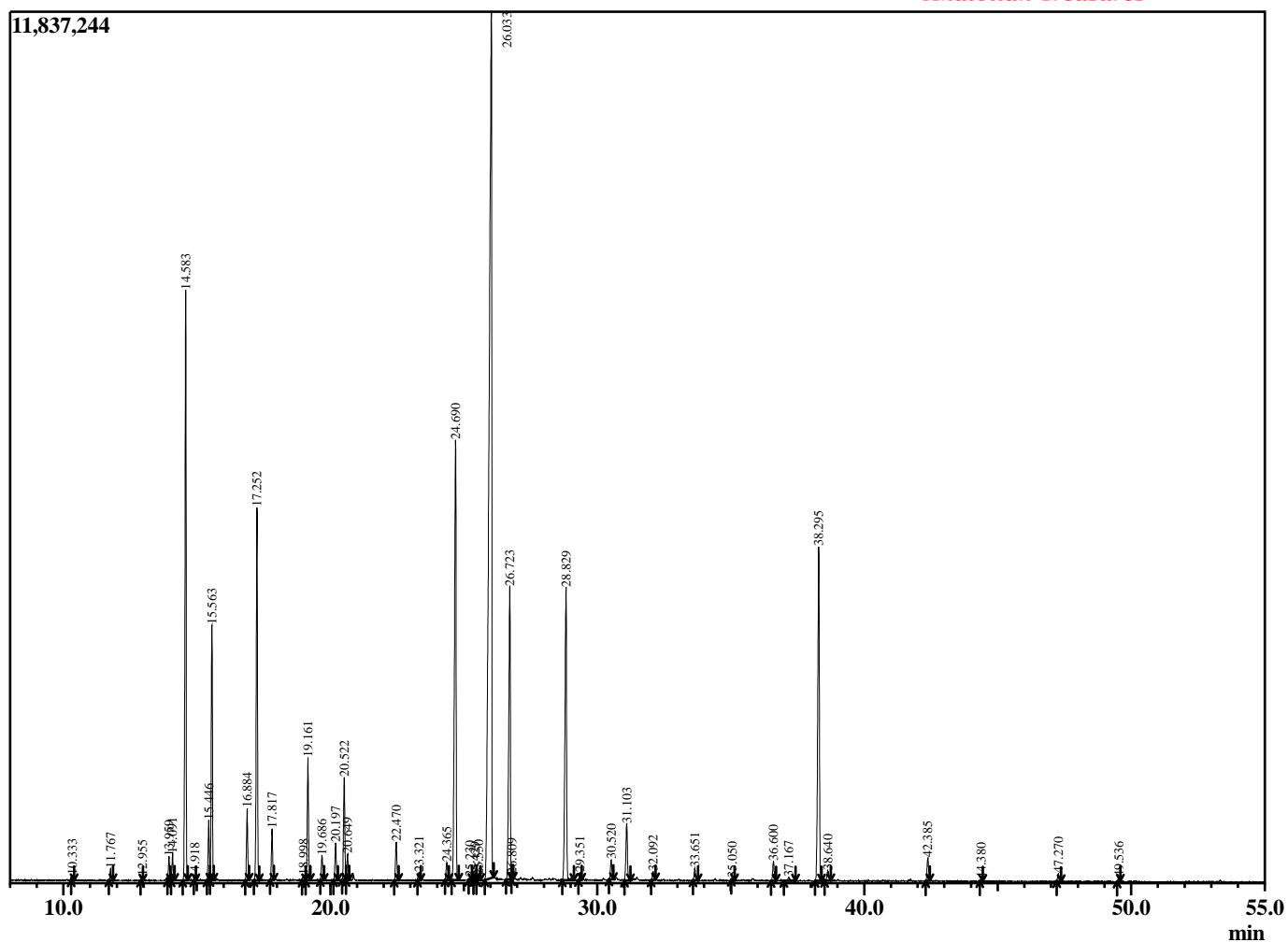
Sample Information

Sample Type : Essential Oil
 Sample Name : Thuja occidentalis
 Injection : 0.10
 Volume :

Cedar Leaf
 Lot# CAF9-FS
 Country: Canada



Chromatogram Thuja occidentalis



R.Time	Name	Area%
10.333	Isovalerate <ethyl->	0.08
11.767	Santene	0.18
12.955	2-Bornene	0.07
13.959	Tricyclene	0.38
14.091	Thujene <alpha->	0.41
14.583	Pinene <alpha->	9.85
14.918	Fenchene <beta->	0.02
15.446	Fenchene <alpha->	1.00
15.563	Camphene	4.30
16.884	Sabinene	1.19
17.252	Pinene <beta->	6.63
17.817	Myrcene	0.86
18.998	Phellandrene <alpha->	0.13
19.161	3-Carene	2.19
19.686	Cymene <meta->	0.46
20.197	Cymene <para->	0.68
20.522	Limonene	1.91
20.649	Phellandrene <beta->	0.46
22.470	Terpinene <gamma->	0.74
23.321	Sabinene hydrate <trans->	0.17
24.365	Terpinolene	0.35
24.690	Fenchone	10.27
25.230	Rosefuran	0.05
25.429	Linalool	0.05
25.550	Sabinene hydrate <cis->	0.12
26.033	Thujone <alpha->	32.38
26.723	Thujone <beta->	6.61
26.809	Fenchol <endo->	0.07
28.829	Camphor	6.96
29.351	Terpineol <trans-beta->	0.15
30.520	Borneol	0.40
31.103	Terpinen-4-ol	1.26
32.092	Terpineol <alpha->	0.19
33.651	Fenchyl acetate <endo->	0.26
35.050	Methyl thymol ether	0.04
36.600	Sabinene hydrate acetate <trans->	0.40
37.167	Thuja unknown	0.08
38.295	Bornyl acetate	7.62
38.640	Dihydrocarvyl acetate	0.29
42.385	Terpinyl acetate <beta->	0.50
44.380	Geranyl acetate	0.03
47.270	Caryophyllene <trans->	0.15
49.536	Humulene <alpha->	0.07
		100.00