

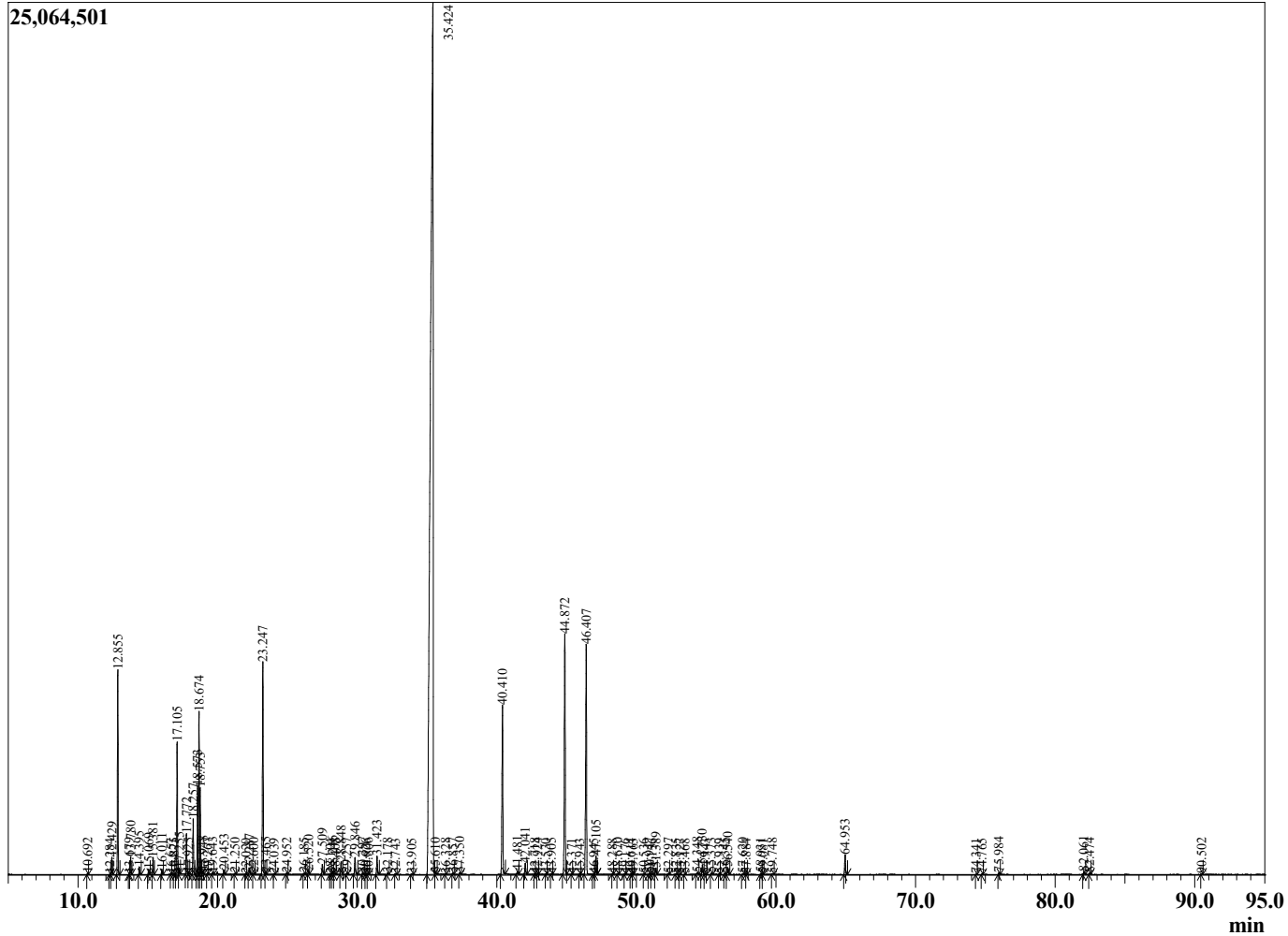
Sample Information

Sample Type : Essential Oil
 Sample Name : Cinnamomum zeylanicum
 Injection Volume : 0.10

Cinnamon Bark
 Lot# MAH10-HE
 Country: Madagascar



Chromatogram Cinnamomum zeylanicum



R.Time	Name	Area%
10.692	Styrene	0.02
12.284	Tricyclene	0.01
12.429	alpha-Thujene	0.28
12.855	alpha-Pinene	3.38
13.679	alpha-Fenchene	0.01
13.780	Camphene	0.30
14.395	Benzaldehyde	0.14
15.069	Sabinene	0.10
15.381	beta-Pinene	0.30
16.011	Myrcene	0.10
16.657	2-Carene	0.01
16.875	Octanal	0.01
17.105	alpha-Phellandrene	2.43
17.255	delta-3-Carene	0.11
17.772	alpha-Terpinene	0.76
17.925	ortho-Cymene	0.02
18.257	para-Cymene	1.04
18.573	Limonene	1.69
18.674	beta-Phellandrene	2.92
18.753	1,8-Cineole	1.50
18.948	cis-beta-Ocimene	0.06
19.267	Butyl 2-methylbutyrate	0.01
19.643	trans-beta-Ocimene	0.03
20.453	gamma-Terpinene	0.09
21.250	trans-Sabinene hydrate	0.02
22.020	Isoterpinolene	0.01
22.287	Terpinolene	0.11
22.600	para-Cymenene	0.02
23.247	Linalool	4.44
23.465	2-Methylbutyl-2-methylbutyrate	0.03
24.039	Phenethyl alcohol	0.01
24.952	cis-para-Menth-2-en-1-ol	0.03
26.185	trans-para-Menth-2-en-1-ol	0.03
26.520	Camphor	0.07
27.509	Hydrocinnamaldehyde	0.21
28.104	Unidentified	0.01
28.246	Borneol	0.06
28.408	2-Methyl benzofuran	0.02
28.848	Terpinen-4-ol	0.26
29.257	para-Cymen-8-ol	0.03
29.846	alpha-Terpineol	0.39
30.397	alpha-Phellandrene epoxide	0.04
30.626	Decanal	0.01
30.806	trans-Piperitol	0.01
31.423	(Z)-Cinnamaldehyde	0.41
32.178	Hydrocinnamyl alcohol	0.04
32.743	ortho-Anisaldehyde	0.01
33.905	Chavicol	0.01
35.424	(E)-Cinnamaldehyde	60.74
35.610	Phellandral	0.04
36.328	Safrole	0.01
36.857	Unidentified	0.02
37.350	(E)-Cinnamyl alcohol	0.04
40.410	Eugenol	3.95
41.481	Hydrocinnamyl acetate	0.07
42.041	alpha-Copaene	0.25

R.Time	Name	Area%
42.718	Unidentified	0.01
42.924	beta-Elemene	0.01
43.530	Methyleugenol	0.01
43.905	cis-beta-Caryophyllene	0.02
44.872	beta-Caryophyllene	5.77
45.371	Unidentified	0.01
45.943	Isoamyl benzoate	0.01
46.407	(E)-Cinnamyl acetate	5.47
46.945	Unidentified	0.01
47.105	alpha-Humulene	0.42
48.288	Unidentified	0.01
48.670	Ar-Curcumene	0.01
49.176	beta-Selinene	0.01
49.614	alpha-Selinene	0.01
49.763	alpha-Murolene	0.01
50.536	Tridecanal	0.01
50.947	delta-Cadinene	0.03
51.136	trans-Calamenene	0.01
51.389	ortho-Methoxycinnamaldehyde	0.15
52.297	alpha-Calacorene	0.02
52.835	Unidentified	0.01
53.127	Unidentified	0.01
53.468	(E)-Nerolidol	0.01
54.348	alpha-Caryophyllene alcohol	0.04
54.730	Caryophyllene oxide	0.24
54.943	Globulol	0.02
55.373	Unidentified	0.04
55.939	Unidentified	0.01
56.345	Humulene epoxide II	0.03
56.540	Tetradecanal	0.15
57.620	Unidentified	0.02
57.884	Caryophylla-4(12),8(13)-dien-5-beta-ol	0.01
58.931	14-Hydroxy-9-epi-Z-Caryophyllene	0.02
59.081	Unidentified	0.01
59.748	14-Hydroxy-9-epi-E-Caryophyllene	0.02
64.953	Benzyl benzoate	0.47
74.341	Phellandrene dimer	0.01
74.765	Phellandrene dimer	0.01
75.984	Phellandrene dimer	0.04
82.061	Unidentified	0.07
82.474	Unidentified	0.03
90.502	3-Phenylpropyl cinnamate	0.02
		100.00