

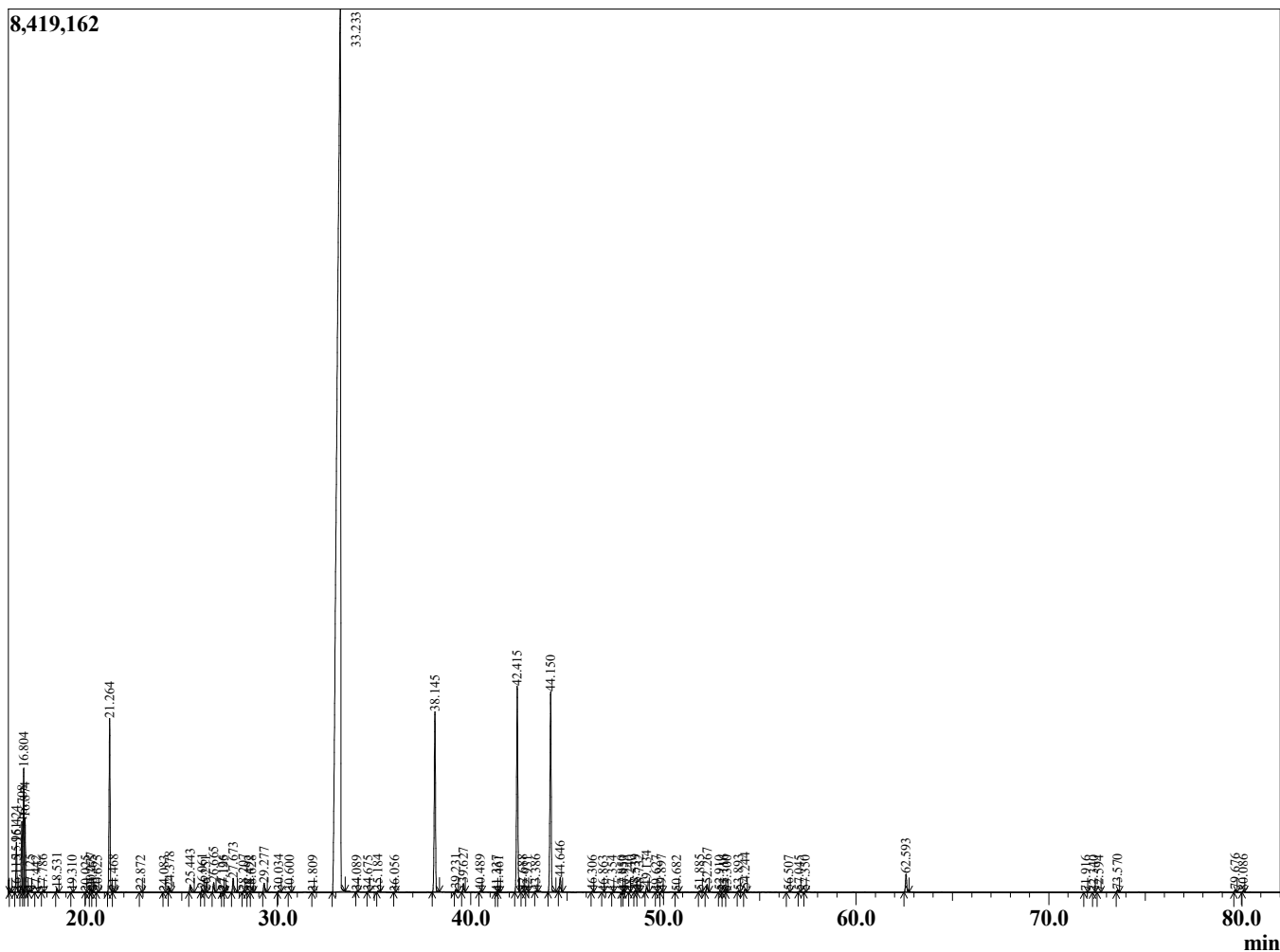
Sample Information

Sample Type : Essential Oil
 Sample Name : Cinnamomum zeylanicum
 Injection Volume : 0.10

Cinnamon Bark
 Lot# MAX12-XH
 Country: Madagascar



Chromatogram Cinnamomum zeylanicum



R.Time	Name	Area%
9.351	Styrene	0.01
10.745	Tricyclene	0.00
10.904	alpha-Thujene	0.23
11.288	alpha-Pinene	3.07
12.050	alpha-Fenchene	0.01
12.143	Camphene	0.26
12.824	Benzaldehyde	0.11
13.373	Sabinene	0.07
13.652	beta-Pinene	0.24
14.302	Myrcene	0.04
14.877	delta-2-Carene	0.01
15.170	Octanal	0.01
15.312	alpha-Phellandrene	2.08
15.442	delta-3-Carene	0.09
15.951	alpha-Terpinene	0.66
16.115	ortho-Cymene	0.02
16.424	para-Cymene	0.99
16.708	Limonene	1.42
16.804	beta-Phellandrene	2.48
16.874	1,8-Cineole	1.32
17.125	cis-beta-Ocimene	0.04
17.442	Butyl 2-methylbutyrate	0.01
17.786	trans-beta-Ocimene	0.02
18.531	gamma-Terpinene	0.08
19.310	trans-Sabinene hydrate	0.02
20.025	Isoterpinolene	0.00
20.277	Terpinolene	0.08
20.365	cis-Linalool oxide (furanoid)	0.01
20.625	para-Cymenene	0.02
21.264	Linalool	3.76
21.468	2-Methylbutyl-2-methylbutyrate	0.03
22.872	cis-para-Menth-2-en-1-ol	0.02
24.083	trans-para-Menth-2-en-1-ol	0.02
24.378	Camphor	0.09
25.443	Hydrocinnamaldehyde	0.18
26.061	endo-Borneol	0.05
26.251	2-Methyl benzofuran	0.02
26.665	Terpinen-4-ol	0.22
27.126	para-Cymen-8-ol	0.02
27.195	Unidentified	0.00
27.673	alpha-Terpineol	0.34
28.207	alpha-Phellandrene epoxide	0.03
28.492	Decanal	0.01
28.628	trans-Piperitol	0.01
29.277	cis-Cinnamaldehyde	0.22
30.034	Hydrocinnamic alcohol	0.04
30.600	Methyl salicylaldehyde ether	0.02
31.809	Chavicol	0.01
33.233	trans-Cinnamaldehyde	64.19
34.089	Safrole	0.01
34.675	Thymol	0.01
35.184	trans-Cinnamyl alcohol	0.03
36.056	Unidentified	0.01
38.145	Eugenol	4.55
39.231	Hydrocinnamyl acetate	0.06
39.627	alpha-Copaene	0.22

R.Time	Name	Area%
40.489	cis-Cinnamyl acetate	0.03
41.337	Methyleugenol	0.01
41.461	cis-beta-Caryophyllene	0.02
42.415	beta-Caryophyllene	5.29
42.688	Unidentified	0.02
42.931	Unidentified	0.01
43.386	Coumarin	0.02
44.150	trans-Cinnamyl acetate	5.22
44.646	alpha-Humulene	0.37
46.306	Ar-Curcumene	0.02
46.863	Unidentified	0.01
47.354	alpha-Murolene	0.01
47.850	Unidentified	0.01
47.953	Bisabolene analogue	0.02
48.240	Unidentified	0.01
48.539	delta-Cadinene	0.04
48.732	trans-calamenene	0.02
49.134	ortho-Methoxycinnamaldehyde	0.13
49.627	Unidentified	0.01
49.897	Unidentified	0.03
50.682	Unidentified	0.01
51.885	alpha-Caryophyllene alcohol	0.04
52.267	Caryophyllene oxide	0.22
52.910	Unidentified	0.02
53.116	Methoxy-Eugenol	0.04
53.300	Unidentified	0.01
53.893	Humulene epoxide II	0.03
54.244	Tetradecanal	0.08
56.507	Unidentified	0.02
57.045	Bulnesol	0.02
57.350	Unidentified	0.01
62.593	Benzyl benzoate	0.47
71.916	Phellandrene dimer	0.01
72.340	Phellandrene dimer	0.01
72.594	Phellandrene dimer	0.01
73.570	Phellandrene dimer	0.05
79.676	Unidentified	0.06
80.086	Unidentified	0.03
88.152	3-Phenylpropyl cinnamate	0.01
		100.00