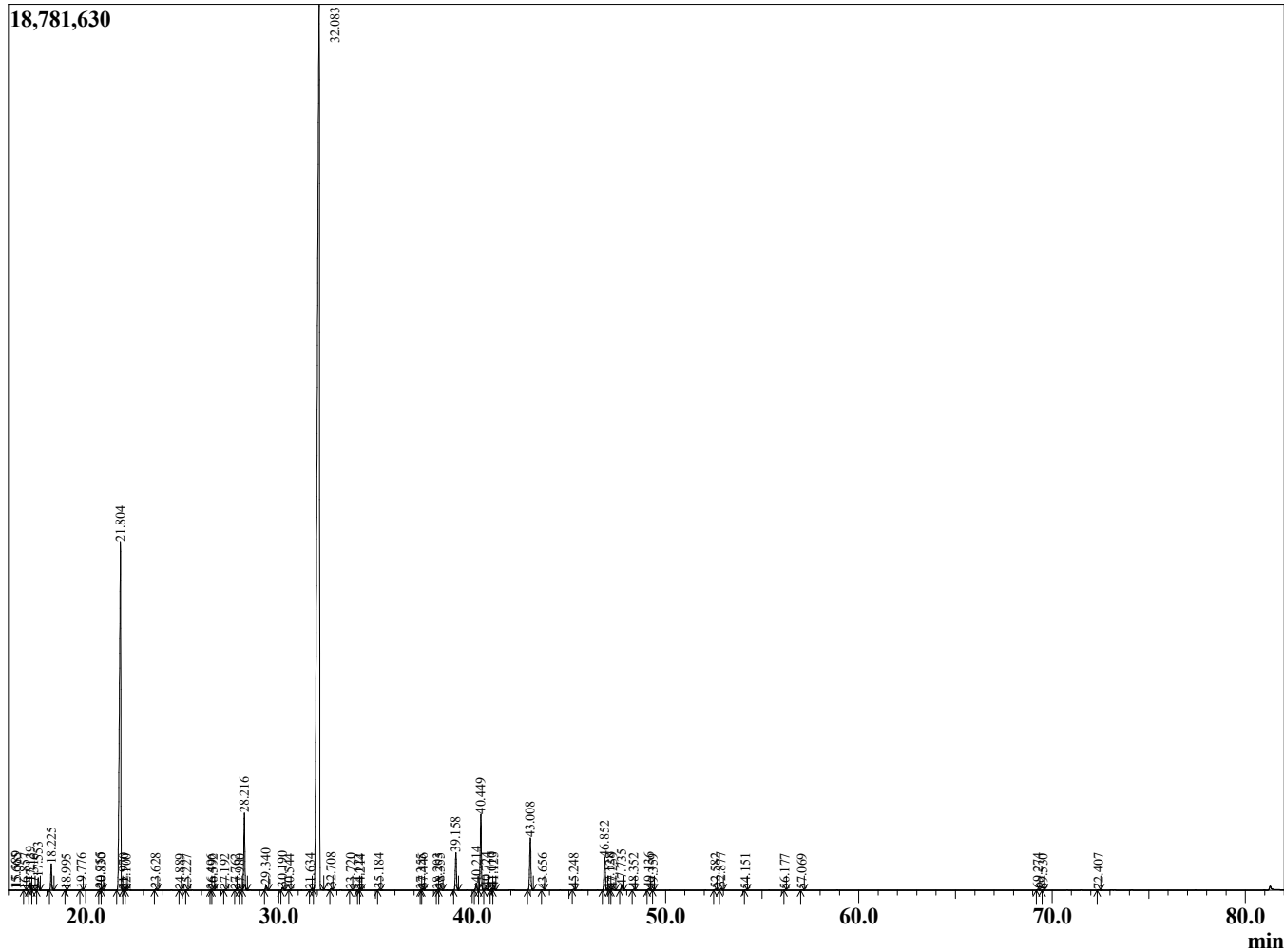


Sample Information

Sample Type : Essential Oil
 Sample Name : Salvia sclarea
 Injection Volume : 0.10

Clary Sage France
 Lot# FRC10-CH
 Country: France

Chromatogram Salvia sclarea



R.Time	Name	Area%
3.758	3-Methylbutanal	0.00
8.133	Hex-(3Z)-enol	0.02
8.514	Hex-(2E)-enol	0.01
8.639	Hexanol	0.01
11.644	alpha-Pinene	0.05
12.521	Camphene	0.01
13.772	Sabinene	0.01
14.058	beta-Pinene	0.05
14.156	1-Octen-3-ol	0.01
14.381	Unidentified	0.00
14.705	Myrcene	1.30
15.589	Pseudolimonene	0.07
15.665	cis-Dehydrolinalool oxide	0.02
16.857	para-Cymene	0.02
17.139	Limonene	0.24
17.316	1,8-cineole	0.01
17.553	cis-beta-Ocimene	0.40
18.225	trans-beta-Ocimene	0.86
18.995	gamma-Terpinene	0.01
19.776	cis-Linalool oxide (furanoid)	0.03
20.755	Terpinolene	0.05
20.830	trans-Linalool oxide (furanoid)	0.03
21.804	Linalool	16.38
21.970	Hotrienol	0.02
22.100	Nonanal	0.01
23.628	allo-Ocimene	0.04
24.889	Camphor	0.01
25.227	Nerol oxide	0.01
26.496	delta-Terpineol	0.01
26.592	Borneol	0.01
27.192	Terpinen-4-ol	0.01
27.762	Unidentified	0.01
27.980	Methyl salicylate	0.00
28.216	alpha-Terpineol	2.91
29.340	Linalyl formate	0.20
30.190	Nerol	0.12
30.544	Unidentified	0.00
31.634	Unidentified	0.01
32.083	Linalyl acetate	67.03
32.708	Unidentified	0.07
33.720	Unidentified	0.02
34.122	Isopulegyl acetate	0.01
34.214	Bornyl acetate	0.01
35.184	Geranyl formate	0.03
37.355	Unidentified	0.01
37.446	Unidentified	0.05
38.203	Unidentified	0.02
38.355	Epoxy-alpha-terpenyl acetate	0.05
39.158	Neryl acetate	1.44
40.214	alpha-Copaene	0.28
40.449	Geranyl acetate	2.96
40.724	beta-Bourbonene	0.08
41.010	beta-Cubebene	0.06
41.123	beta-Elemene	0.07
43.008	beta-Caryophyllene	2.14
43.656	beta-Copaene	0.02

R.Time	Name	Area%
45.248	alpha-Humulene	0.03
46.852	Germacrene D	1.36
47.128	Unidentified	0.01
47.259	Valencene	0.07
47.735	Bicyclogermacrene	0.20
48.352	(E,E)-alpha-Farnesene	0.03
49.136	delta-Cadinene	0.06
49.359	Unidentified	0.00
52.582	Spathulenol	0.04
52.877	Caryophyllene oxide	0.07
54.151	Unidentified	0.02
56.177	Unidentified	0.01
57.069	alpha-Eudesmol	0.02
69.274	Sclareoloxide	0.04
69.530	Unidentified	0.01
72.407	meta-Camphorene	0.02
84.744	Sclareol	0.70
		100.00