

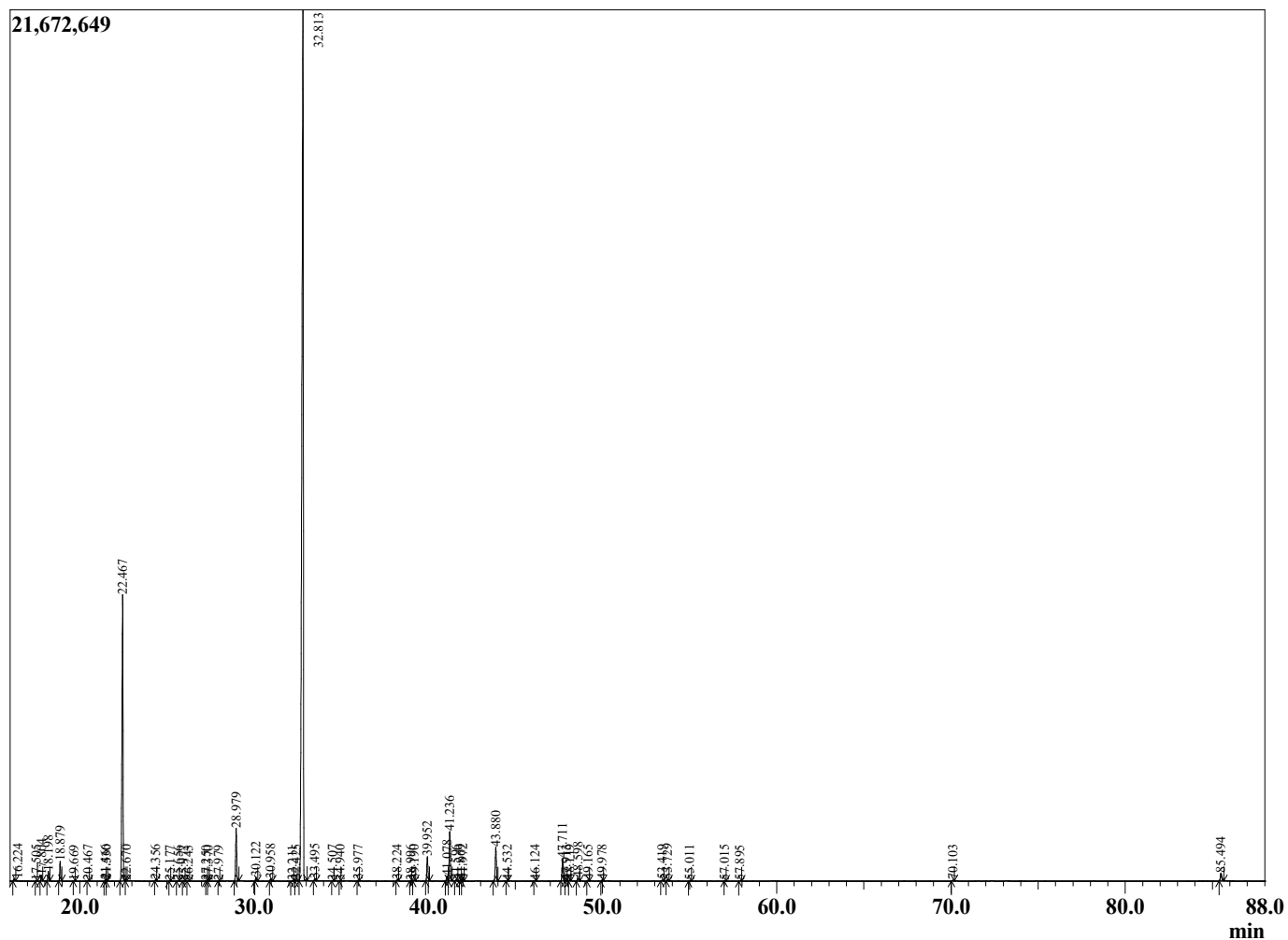
Sample Information

Sample Type : Essential Oil
 Sample Name : Salvia sclarea
 Injection Volume : 0.10

Clary Sage France
 Lot# FRZ9-ZE
 Country: France



Chromatogram Salvia sclarea



R.Time	Name	Area%
4.021	3-Methylbutanal	0.01
8.595	Hex-(3Z)-enol	0.02
8.980	Hex-(2E)-enol	0.01
9.116	Hexanol	0.01
12.226	alpha-Pinene	0.05
13.126	Camphene	0.00
14.385	Sabinene	0.01
14.685	beta-Pinene	0.07
15.312	Myrcene	1.44
16.224	Pseudolimonene	0.10
17.505	para-Cymene	0.02
17.804	Limonene	0.25
18.198	cis-beta-Ocimene	0.42
18.879	trans-beta-Ocimene	0.88
19.669	gamma-Terpinene	0.01
20.467	cis-Linalool oxide (furanoid)	0.02
21.466	Terpinolene	0.06
21.530	trans-Linalool oxide (furanoid)	0.02
22.467	Linalool	16.10
22.670	Hotrienol	0.01
24.356	allo-Ocimene	0.04
25.177	neo-allo-Ocimene	0.01
25.656	Camphor	0.01
25.972	Nerol oxide	0.01
26.243	Unidentified	0.01
27.250	delta-Terpineol	0.00
27.370	Borneol	0.01
27.979	Terpinen-4-ol	0.01
28.979	alpha-Terpineol	2.78
30.122	Linalyl formate	0.19
30.958	Nerol	0.12
32.211	Unidentified	0.02
32.425	Unidentified	0.05
32.813	Linalyl acetate	67.98
33.495	Unidentified	0.09
34.507	Unidentified	0.02
34.940	Isopulegyl acetate	0.01
35.977	Geranyl formate	0.03
38.224	Unidentified	0.06
38.996	Epoxy-alpha-terpenyl acetate	0.02
39.190	Unidentified	0.05
39.952	Neryl acetate	1.35
41.078	alpha-Copaene	0.28
41.236	Geranyl acetate	2.72
41.596	beta-Bourbonene	0.06
41.869	beta-Cubebene	0.06
41.972	beta-Elemene	0.08
43.880	beta-Caryophyllene	1.96
44.532	beta-Copaene	0.02
46.124	alpha-Humulene	0.03
47.711	Germacrene D	1.29
47.913	Unidentified	0.02
48.119	Valencene	0.05
48.598	Bicyclogermacrene	0.19
49.165	(E,E)-alpha-Farnesene	0.04
49.978	delta-Cadinene	0.05

R.Time	Name	Area%
53.419	Spathulenol	0.04
53.729	Caryophyllene oxide	0.08
55.011	Unidentified	0.03
57.015	Unidentified	0.01
57.895	alpha-Eudesmol	0.02
70.103	Sclareoloxide	0.04
85.494	Sclareol	0.56
		100.00