

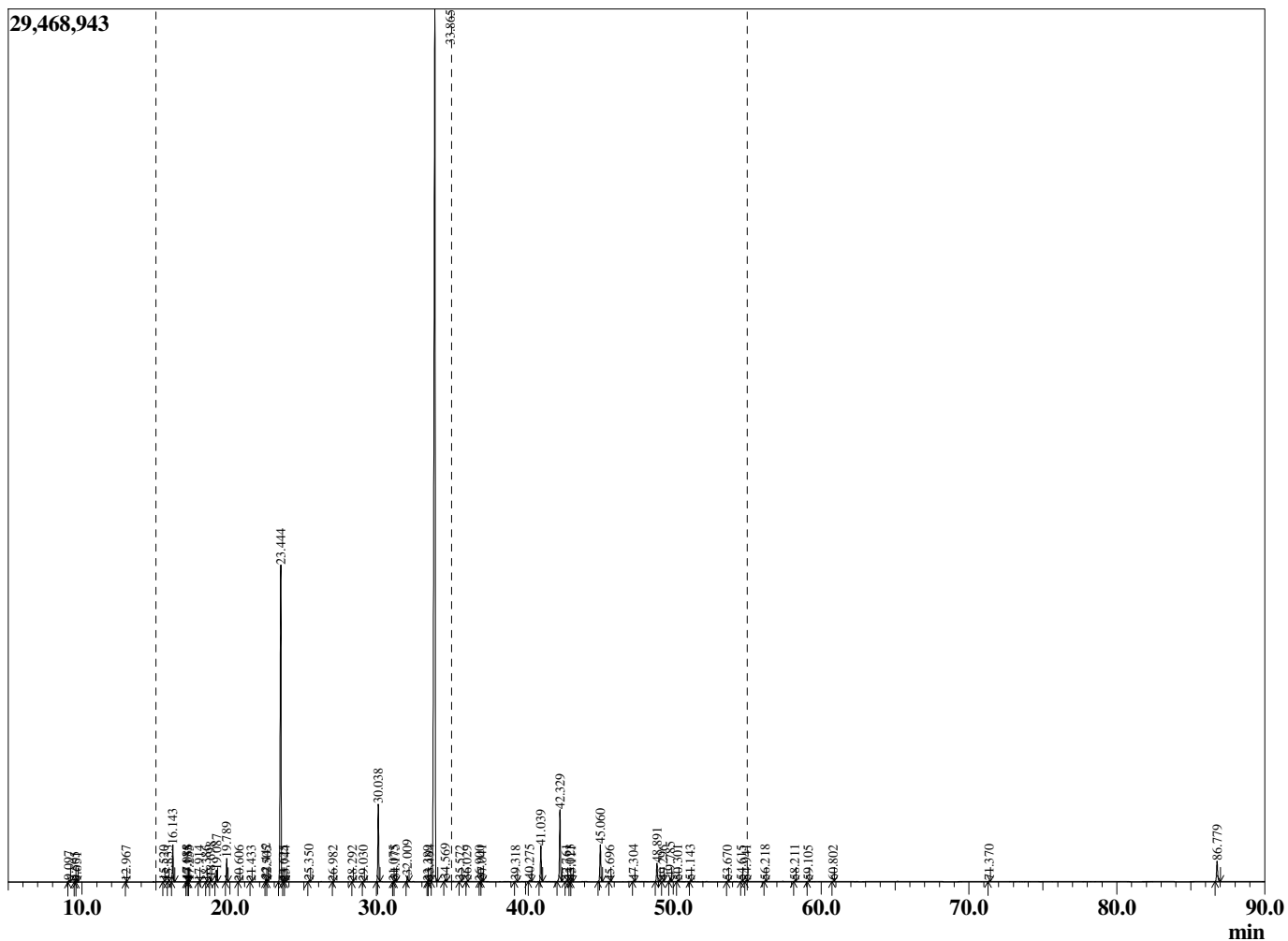
Sample Information

Sample Type : Essential Oil
 Sample Name : Salvia sclarea
 Injection Volume : 0.10

Clary Sage Premium
 Lot# USW18-WC
 Country: USA



Chromatogram Salvia sclarea



R.Time	Name	Area%
9.097	Hex-3(Z)-enol	0.06
9.505	Hex-2(E)-enol	0.02
9.651	n-Hexanol	0.01
12.967	alpha-Pinene	0.01
15.520	beta-Pinene	0.03
15.833	Unidentified	0.01
16.143	Myrcene	1.53
17.088	Pseudolimonene	0.06
17.135	Unidentified	0.01
17.255	Unidentified	0.00
17.914	alpha-Terpinene	0.01
18.386	para-Cymene	0.01
18.698	Limonene	0.18
19.087	(Z)-beta-Ocimene	0.50
19.789	(E)-beta-Ocimene	1.01
20.606	gamma-Terpinene	0.01
21.433	cis-Linalool oxide (furanoid)	0.01
22.442	Terpinolene	0.11
22.505	trans-Linalool oxide (furanoid)	0.02
23.444	Linalool	16.95
23.625	Unidentified	0.02
23.744	Nonanal	0.01
25.350	allo-Ocimene	0.05
26.982	Unidentified	0.01
28.292	Unidentified	0.01
29.030	Terpinen-4-ol	0.02
30.038	alpha-Terpineol	3.77
31.075	Unidentified	0.01
31.175	Linalyl formate	0.08
32.009	Nerol	0.28
33.389	Unidentified	0.01
33.494	Unidentified	0.04
33.865	Linalyl acetate	64.15
34.569	Unidentified	0.10
35.572	Unidentified	0.02
36.029	Unidentified	0.01
36.900	Unidentified	0.01
37.041	Geranyl formate	0.06
39.318	Unidentified	0.03
40.275	alpha-Terpinyl acetate	0.07
41.039	Neryl acetate	1.80
42.329	Geranyl acetate	3.82
42.761	beta-Bourbonene	0.03
43.023	beta-Cubebene	0.04
43.111	beta-Elementene	0.04
45.060	trans-beta-Caryophyllene	2.04
45.696	Unidentified	0.01
47.304	alpha-Humulene	0.03
48.891	Germacrene D	1.01
49.296	Unidentified	0.03
49.785	Bicyclogermacrene	0.20
50.301	(E,E)-alpha-Farnesene	0.04
51.143	delta-Cadinene	0.03
53.670	trans-Nerolidol	0.03
54.615	Spathulenol	0.03
54.941	Caryophyllene oxide	0.06

R.Time	Name	Area%
56.218	Unidentified	0.03
58.211	Unidentified	0.03
59.105	beta-Eudesmol	0.02
60.802	alpha-Bisabolol	0.03
71.370	Sclareoloxide	0.03
86.779	Sclareol	1.32
		100.00