

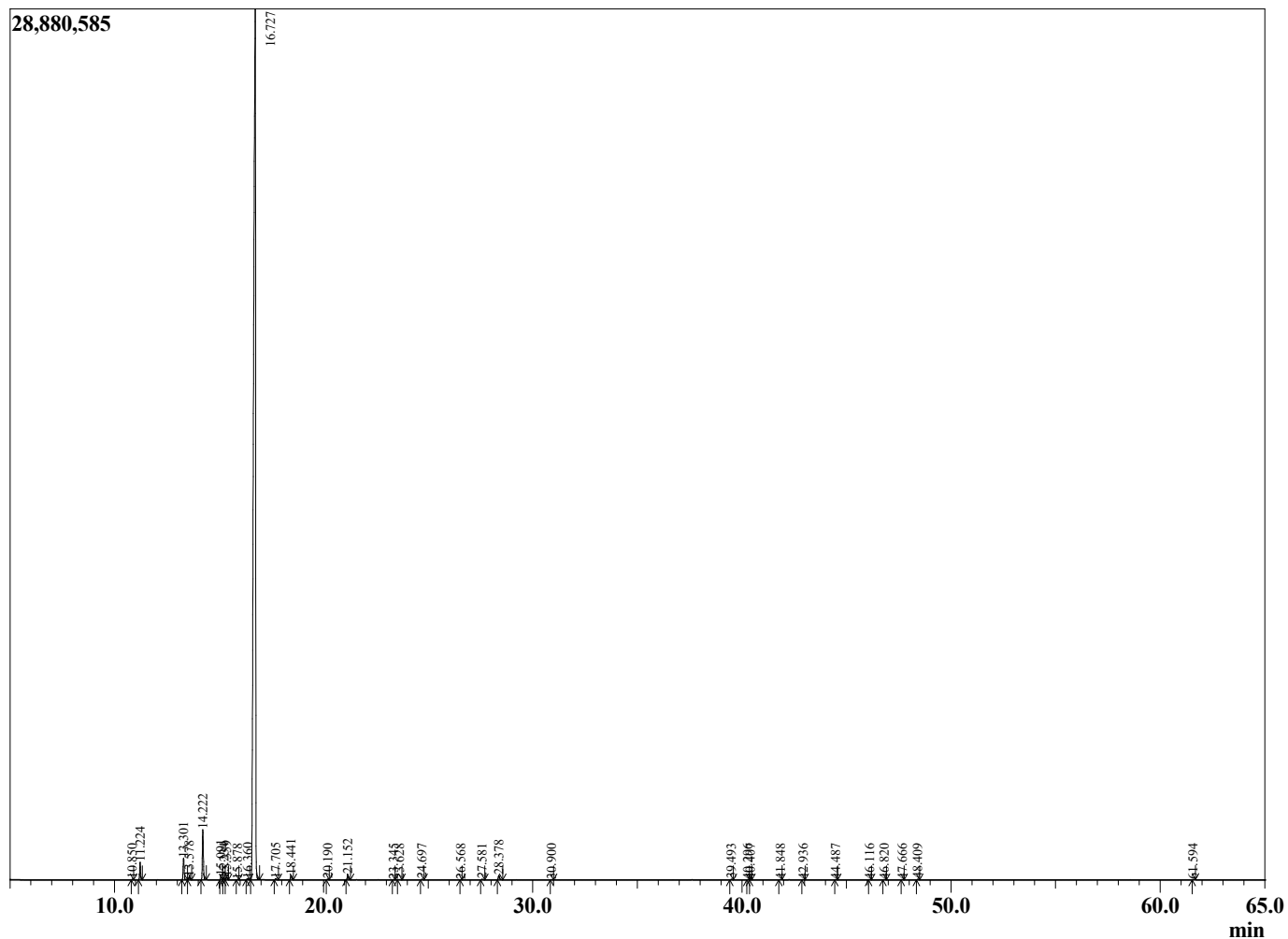
Sample Information

Sample Type : Essential Oil
 Sample Name : Citrus clementina
 Injection Volume : 0.10

Clementine
 Lot# ITF18-FK
 Country: Italy



Chromatogram Citrus clementina



R.Time	Name	Area%
10.850	alpha-Thujene	0.02
11.224	alpha-Pinene	0.86
13.301	Sabinene	1.12
13.578	beta-Pinene	0.17
14.222	Myrcene	2.65
15.091	Octanal	0.22
15.234	alpha-Phellandrene	0.07
15.359	delta-3-Carene	0.16
15.878	alpha-Terpinene	0.01
16.360	para-Cymene	0.08
16.727	Limonene	93.32
17.705	trans-beta-Ocimene	0.07
18.441	gamma-Terpinene	0.27
20.190	Terpinolene	0.03
21.152	Linalool	0.32
23.345	cis-Limonene oxide	0.01
23.628	trans-Limonene oxide	0.03
24.697	Citronellal	0.03
26.568	Terpinen-4-ol	0.01
27.581	alpha-Terpineol	0.04
28.378	Decanal	0.30
30.900	Carvone	0.02
39.493	alpha-Copaene	0.03
40.296	beta-Cubebene	0.02
40.407	beta-Elemene	0.01
41.848	Dodecanal	0.02
42.936	beta-Copaene	0.02
44.487	Unidentified	0.01
46.116	Germacrene D	0.01
46.820	Valencene	0.03
47.666	trans,trans-alpha-Farnesene	0.01
48.409	delta-Cadinene	0.03
61.594	beta-Sinensal	0.02
		100.00