

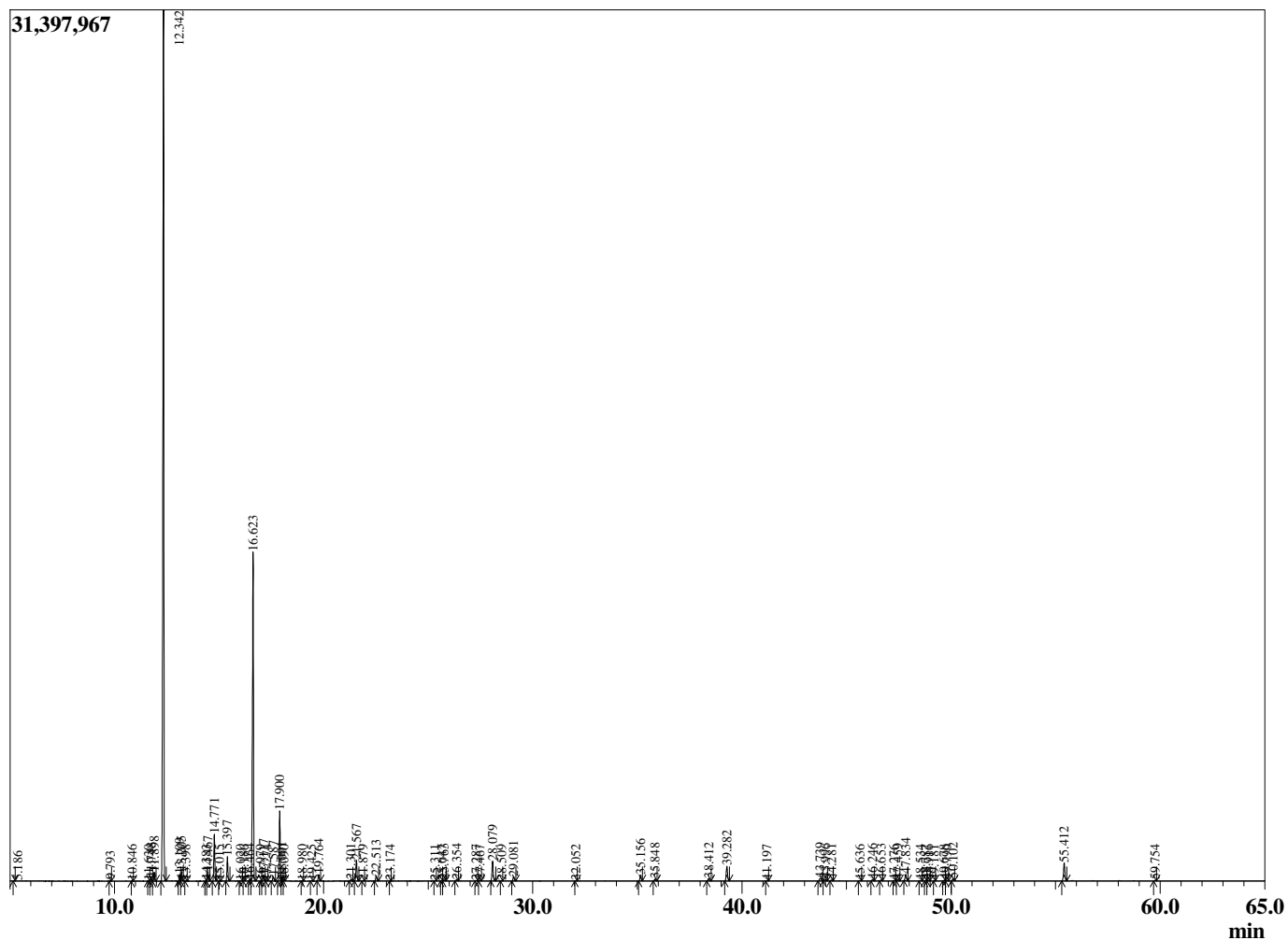
Sample Information

Sample Type : Essential Oil
 Sample Name : Cupressus sempervirens
 Injection Volume : 0.10

Cypress Leaf
 Lot# CRN25-NC
 Country: Crete



Chromatogram Cupressus sempervirens



R.Time	Name	Area%
5.186	1-Pentanol	0.01
9.793	Santene	0.04
10.846	Bornylene	0.03
11.630	Hashishene	0.02
11.748	Tricyclene	0.16
11.898	alpha-Thujene	0.49
12.342	alpha-Pinene	56.60
13.109	alpha-Fenchene	0.38
13.205	Camphene	0.52
13.398	Thuja-2,4(10)diene	0.02
14.383	Unidentified	0.04
14.467	Sabinene	0.55
14.771	beta-Pinene	2.78
15.015	Unidentified	0.01
15.397	Myrcene	1.46
16.020	Carene isomer	0.04
16.186	Phellandrene isomer	0.01
16.464	alpha-Phellandrene	0.09
16.623	delta-3-Carene	21.11
16.979	1,4-Cineole	0.01
17.117	alpha-Terpinene	0.39
17.274	meta-Cymene	0.02
17.587	para-Cymene	0.33
17.900	Limonene	4.66
18.001	beta-Phellandrene	0.24
18.090	1,8-Cineole	0.03
18.980	(E)-beta-Ocimene	0.02
19.425	Terpinene isomer	0.03
19.764	gamma-Terpinene	0.43
21.301	Isoterpinolene	0.09
21.567	Terpinolene	1.45
21.879	para-Cymenene	0.03
22.513	Linalool	0.38
23.174	Unidentified	0.01
25.311	trans-Pinocarveol	0.01
25.647	trans-Verbenol	0.01
25.763	Camphor	0.08
26.354	Unidentified	0.10
27.287	Thujen-2-one	0.04
27.467	Borneol	0.04
28.079	Terpinen-4-ol	1.51
28.509	para-Cymen-8-ol	0.01
29.081	alpha-Terpineol	0.33
32.052	Thymol methyl ether	0.01
35.156	Bornyl acetate	0.46
35.848	Unidentified	0.15
38.412	Unidentified	0.20
39.282	alpha-Terpinyl acetate	1.22
41.197	alpha-Copaene	0.03
43.739	alpha-Cedrene	0.29
43.996	trans-beta-Caryophyllene	0.15
44.281	beta-Cedrene	0.07
45.636	trans-Murrola-3,5-diene	0.03
46.246	alpha-Humulene	0.10
46.653	cis-Cadina-1(6),4-diene	0.06
47.276	10-beta-H-Cadina-1(6),4-diene	0.02

R.Time	Name	Area%
47.459	trans-Cadina-1(6),4-diene	0.10
47.834	Germacrene D	0.55
48.534	trans-Murrola-4(14),5-diene	0.03
48.787	Unidentified	0.03
48.916	alpha-Murolene	0.05
49.181	Unidentified	0.01
49.678	alpha-Alaskene	0.04
49.790	gamma-Cadinene	0.05
50.102	delta-Cadinene	0.18
55.412	Cedrol	1.55
59.754	alpha-Bisabolol	0.03
		100.00