

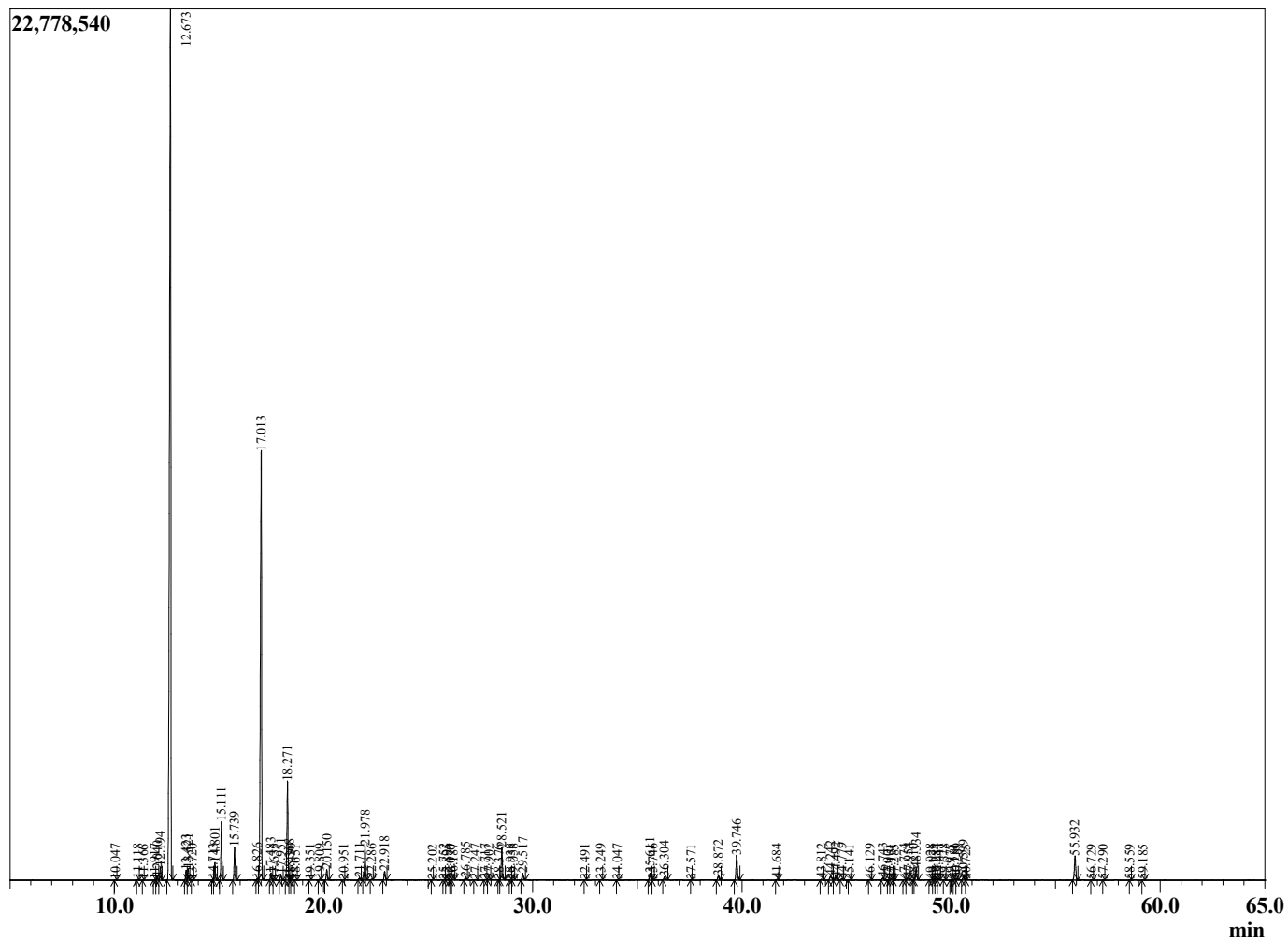
Sample Information

Sample Type : Essential Oil  
 Sample Name : Cupressus sempervirens  
 Injection Volume : 0.10

Cypress Leaf  
 Lot# CRX29-XH  
 Country: Crete



Chromatogram Cupressus sempervirens



R.Time	Name	Area%
10.047	Santene	0.03
11.118	Unidentified	0.03
11.366	Unidentified	0.01
11.917	Hashishene	0.02
12.040	Tricyclene	0.14
12.194	alpha-Thujene	0.55
12.673	alpha-Pinene	52.75
13.423	alpha-Fenchene	0.41
13.521	Camphene	0.47
13.720	Thuja-2,4(10)-diene	0.02
14.713	meta-Cymene	0.05
14.801	Sabinene	0.77
15.111	beta-Pinene	2.61
15.739	Myrcene	1.44
16.826	alpha-Phellandrene	0.07
17.013	delta-3-Carene	23.38
17.483	alpha-Terpinene	0.33
17.635	para-Cymene	0.02
17.951	ortho-Cymene	0.27
18.271	Limonene	4.64
18.368	beta-Phellandrene	0.24
18.430	1,8-Cineole	0.01
18.651	cis-beta-Ocimene	0.01
19.351	trans-beta-Ocimene	0.02
19.809	gamma-Terpinene analogue	0.04
20.150	gamma-Terpinene	0.51
20.951	trans-Sabinene hydrate	0.01
21.711	Isoterpinolene	0.10
21.978	Terpinolene	1.70
22.286	para-Cymenene	0.04
22.918	Linalool	0.43
25.202	Unidentified	0.01
25.752	trans-Pinocarveol	0.01
25.895	Epoxyterpinolene	0.02
26.070	trans-Verbenol	0.01
26.187	Camphor	0.05
26.785	Karahanaenone	0.13
27.247	para-Mentha-1,5-dien-8-ol	0.02
27.717	Umbellulone	0.02
27.902	Borneol	0.04
28.376	Unidentified	0.00
28.521	Terpinen-4-ol	1.78
28.938	para-Cymen-8-ol	0.02
29.058	Unidentified	0.02
29.517	alpha-Terpineol	0.36
32.491	Thymol methyl ether	0.01
33.249	Linalyl acetate	0.02
34.047	Plinyl acetate	0.02
35.611	Bornyl acetate	0.40
35.746	Unidentified	0.02
36.304	Unidentified	0.19
37.571	Deca-(2Z,4Z)-dienol	0.01
38.872	gamma-Terpinyl acetate	0.24
39.746	alpha-Terpinyl acetate	1.54
41.684	alpha-Copaene	0.04
43.812	Calone	0.05

R.Time	Name	Area%
44.242	alpha-Cedrene	0.33
44.492	trans-beta-Caryophyllene	0.18
44.779	beta-Cedrene	0.08
45.141	beta-Copaene	0.02
46.129	Cadina-3,5-diene	0.03
46.743	alpha-Humulene	0.13
47.001	cis-Cadina-1(6),4-diene	0.01
47.151	cis-Muurolo-4(14),5-diene	0.06
47.285	alpha-Acoradiene	0.01
47.774	trans-Cadina-1(6),4-diene	0.04
47.954	gamma-Muuroloene	0.13
48.210	alpha-Amorphene	0.01
48.334	Germacrene D	0.69
49.028	trans-Murolo-4(14),5-diene	0.04
49.175	Unidentified	0.02
49.284	Epizonarene	0.05
49.411	alpha-Muuroloene	0.07
49.678	delta-Amorphene	0.02
49.975	Unidentified	0.01
50.181	alpha-Alaskene	0.06
50.289	gamma-Cadinene	0.07
50.599	delta-Cadinene	0.23
50.725	trans-Calamenene	0.01
55.932	Cedrol	1.49
56.729	Epicedrol	0.01
57.290	alpha-Acorenol	0.01
58.559	alpha-Cadinol	0.01
59.185	Unidentified	0.02
		100.00