

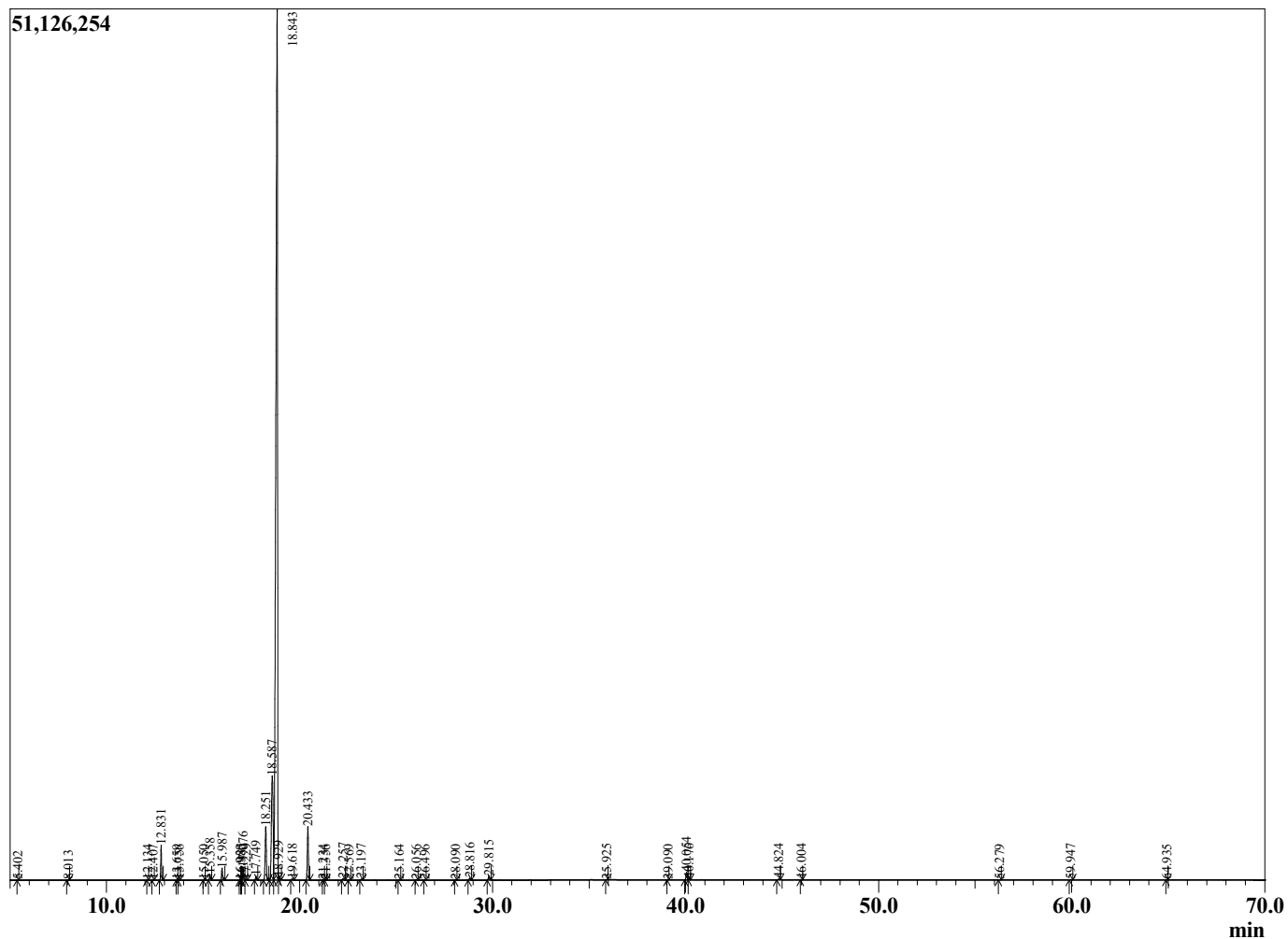
Sample Information

Sample Type : Essential Oil  
 Sample Name : Eucalyptus globulus :  
 Injection Volume : 0.10

Eucalyptus Blue Gum  
 Lot# AUH29-HH  
 Country: Australia



Chromatogram Eucalyptus globulus



R.Time	Name	Area%
4.547	3-Penten-2-ol	0.00
5.402	1-Pentanol	0.00
8.013	Isovaleric acid	0.02
12.134	Hashishene	0.00
12.407	alpha-Thujene	0.01
12.831	alpha-Pinene	1.54
13.659	alpha-Fenchene	0.00
13.756	Camphene	0.01
15.050	Sabinene	0.01
15.358	beta-Pinene	0.30
15.987	Myrcene	0.61
16.930	Pseudolimonene	0.01
16.985	Unidentified	0.02
17.076	alpha-Phellandrene	0.64
17.229	delta-3-Carene	0.03
17.749	alpha-Terpinene	0.20
18.251	para-Cymene	3.30
18.587	Limonene	9.48
18.843	1,8-Cineole	79.48
18.929	cis-beta-Ocimene	0.14
19.618	trans-beta-Ocimene	0.06
20.433	gamma-Terpinene	2.94
21.234	cis-Linalool oxide (furanoid)	0.01
21.356	Pinol	0.01
22.257	Terpinolene	0.09
22.569	para-Cymenene	0.01
23.197	Linalool	0.05
25.164	allo-Ocimene	0.02
26.056	trans-Pinocarveol	0.02
26.496	Camphor	0.01
28.090	delta-Terpineol	0.01
28.816	Terpinen-4-ol	0.10
29.815	alpha-Terpineol	0.24
35.925	Bornyl acetate	0.01
39.090	Terpinyl acetate analogue	0.00
40.054	alpha-Terpinyl acetate	0.46
40.176	gamma-Terpinyl acetate	0.05
44.824	trans-beta-Caryophyllene	0.03
46.004	Aromadendrene	0.01
56.279	Cedrol	0.01
59.947	cis-alpha-Santalol	0.02
64.935	Benzyl benzoate	0.01
		100.00