

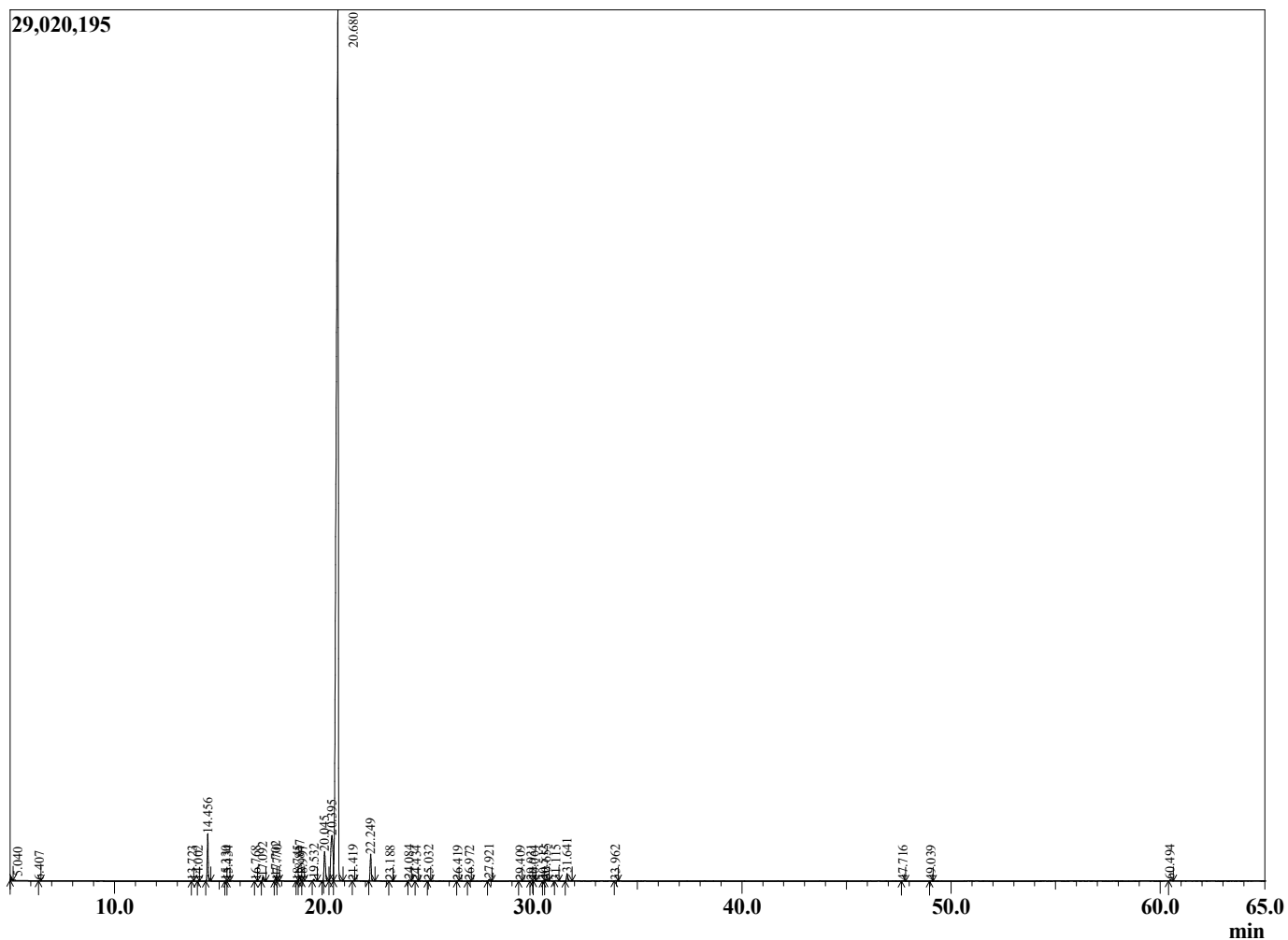
Sample Information

Sample Type : Essential Oil
 Sample Name : Eucalyptus smithii
 Injection Volume : 0.10

Eucalpytus Gully Gum
 Lot# AUH18-HE
 Country: Australia



Chromatogram Eucalyptus smithii



R.Time	Name	Area%
5.040	3-Methylbutanal	0.12
6.407	Unidentified	0.01
13.723	Hashishene	0.01
14.002	alpha-Thujene	0.01
14.456	alpha-Pinene	2.29
15.330	alpha-Fenchene	0.01
15.434	Camphene	0.02
16.768	Unidentified	0.01
17.092	beta-Pinene	0.20
17.702	Myrcene	0.23
17.770	Unidentified	0.02
18.745	Unidentified	0.01
18.847	alpha-Phellandrene	0.30
18.997	delta-3-Carene	0.02
19.532	alpha-Terpinene	0.10
20.045	para-Cymene	2.10
20.395	Limonene	4.96
20.680	1,8-Cineole	87.09
21.419	(E)-beta-Ocimene	0.02
22.249	gamma-Terpinene	1.50
23.188	Pinol	0.01
24.084	Terpinolene	0.04
24.434	para-Cymenene	0.01
25.032	Linalool	0.02
26.419	alpha-Fenchol	0.01
26.972	allo-Ocimene	0.01
27.921	trans-Pinocarveol	0.10
29.409	Pinocarvone	0.01
29.931	delta-Terpineol	0.02
30.064	Borneol	0.01
30.512	Unidentified	0.01
30.655	Terpinen-4-ol	0.09
31.115	trans-Isocarveol	0.04
31.641	alpha-Terpineol	0.48
33.962	Mentha-1(7),8-dien-2-ol	0.02
47.716	Aromadendrene	0.02
49.039	Alloaromadendrene	0.01
60.494	beta-Eudesmol	0.09
		100.00