

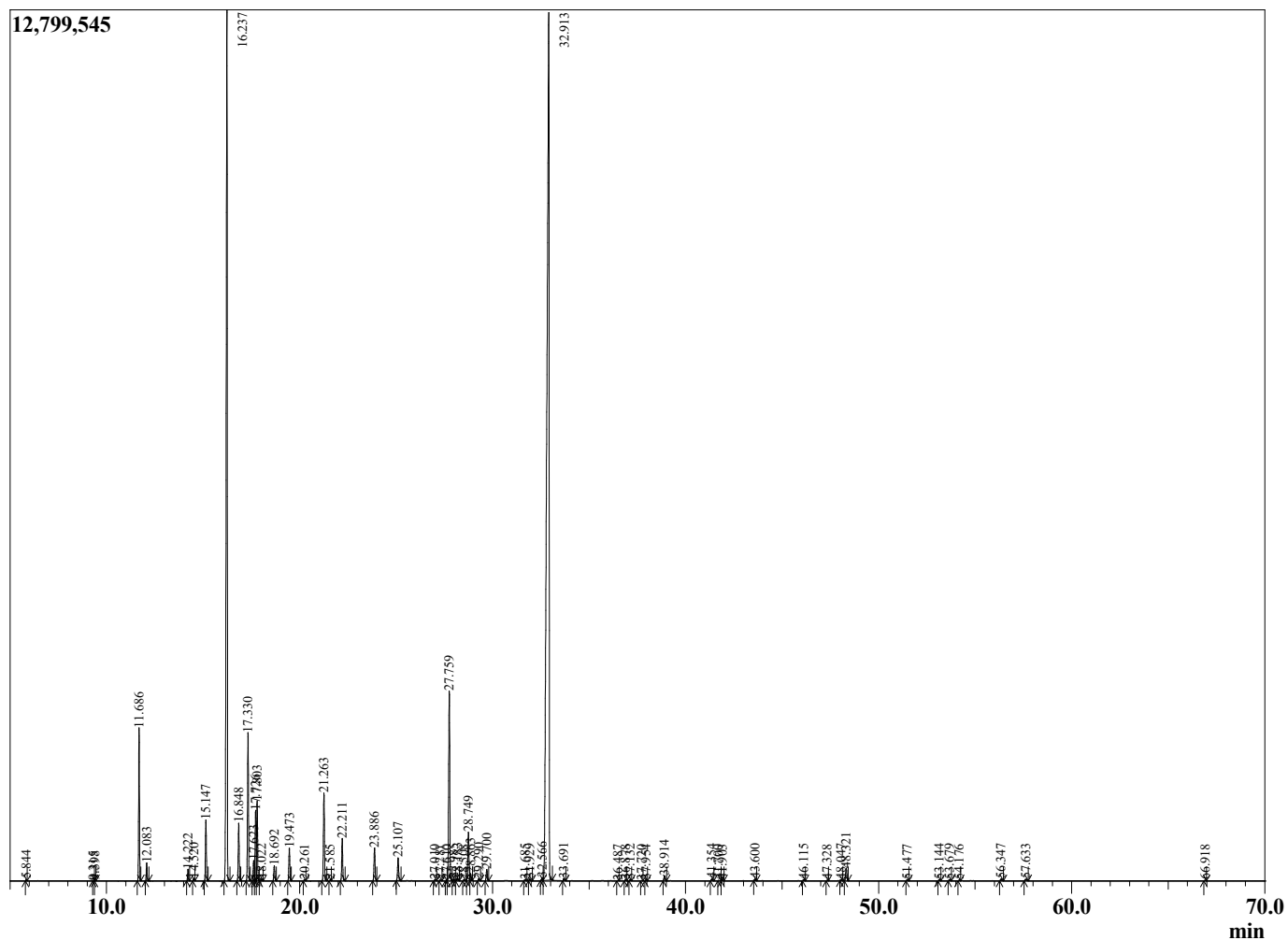
Sample Information

Sample Type : Essential Oil  
 Sample Name : Eucalyptus dives  
 Injection : 0.10  
 Volume :

Eucalyptus Peppermint  
 Lot# SAN18-NK  
 Country: South America



Chromatogram Eucalyptus dives



R.Time	Name	Area%
5.844	Toluene	0.02
9.315	Isoamyl acetate	0.00
9.398	2-Methylbutyl acetate	0.01
11.686	alpha-Thujene	2.97
12.083	alpha-Pinene	0.36
14.222	Sabinene	0.25
14.520	beta-Pinene	0.05
15.147	Myrcene	1.36
16.237	alpha-Phellandrene	22.75
16.848	alpha-Terpinene	1.28
17.330	para-Cymene	3.47
17.623	Limonene	0.47
17.726	beta-Phellandrene	1.66
17.803	1,8-Cineole	1.88
18.022	cis-beta-Ocimene	0.04
18.692	trans-beta-Ocimene	0.36
19.473	gamma-Terpinene	0.78
20.261	trans-Sabinene hydrate	0.02
21.263	Terpinolene	2.24
21.585	para-Cymenene	0.02
22.211	Linalool	1.06
23.886	cis-para-Menth-2-en-1-ol	0.85
25.107	trans-para-Menth-2-en-1-ol	0.60
27.010	Unidentified	0.03
27.281	Unidentified	0.03
27.610	Unidentified	0.02
27.759	Terpinen-4-ol	5.30
27.985	Unidentified	0.04
28.183	para-Cymen-8-ol	0.06
28.508	Methyl salicylate	0.02
28.749	alpha-Terpineol	1.36
28.863	trans-Piperitol	0.19
29.290	alpha-Phellandrene epoxide	0.06
29.700	trans-Piperitol	0.31
31.685	Neral	0.04
31.929	Methyl phenethyl ketone	0.05
32.566	Geraniol	0.08
32.913	Piperitone	48.71
33.691	Geranial	0.06
36.487	Unidentified	0.01
36.878	Unidentified	0.02
37.132	Unidentified	0.03
37.720	Unidentified	0.01
37.954	delta-Elementene	0.03
38.914	alpha-Terpinyl acetate	0.15
41.354	trans-Methyl cinnamate	0.05
41.700	beta-Elementene	0.00
41.903	Unidentified	0.02
43.600	beta-Caryophyllene	0.05
46.115	Alloaromadendrene	0.03
47.328	Unidentified	0.01
48.047	Viridiflorene	0.03
48.321	Bicyclogermacrene	0.39
51.477	alpha-Elementol	0.03
53.144	Spathulenol	0.03
53.679	Globulol	0.03

R.Time	Name	Area%
54.176	Viridiflorol	0.02
56.347	Unidentified	0.06
57.633	alpha-Eudesmol	0.07
66.918	Unidentified	0.01
		100.00