

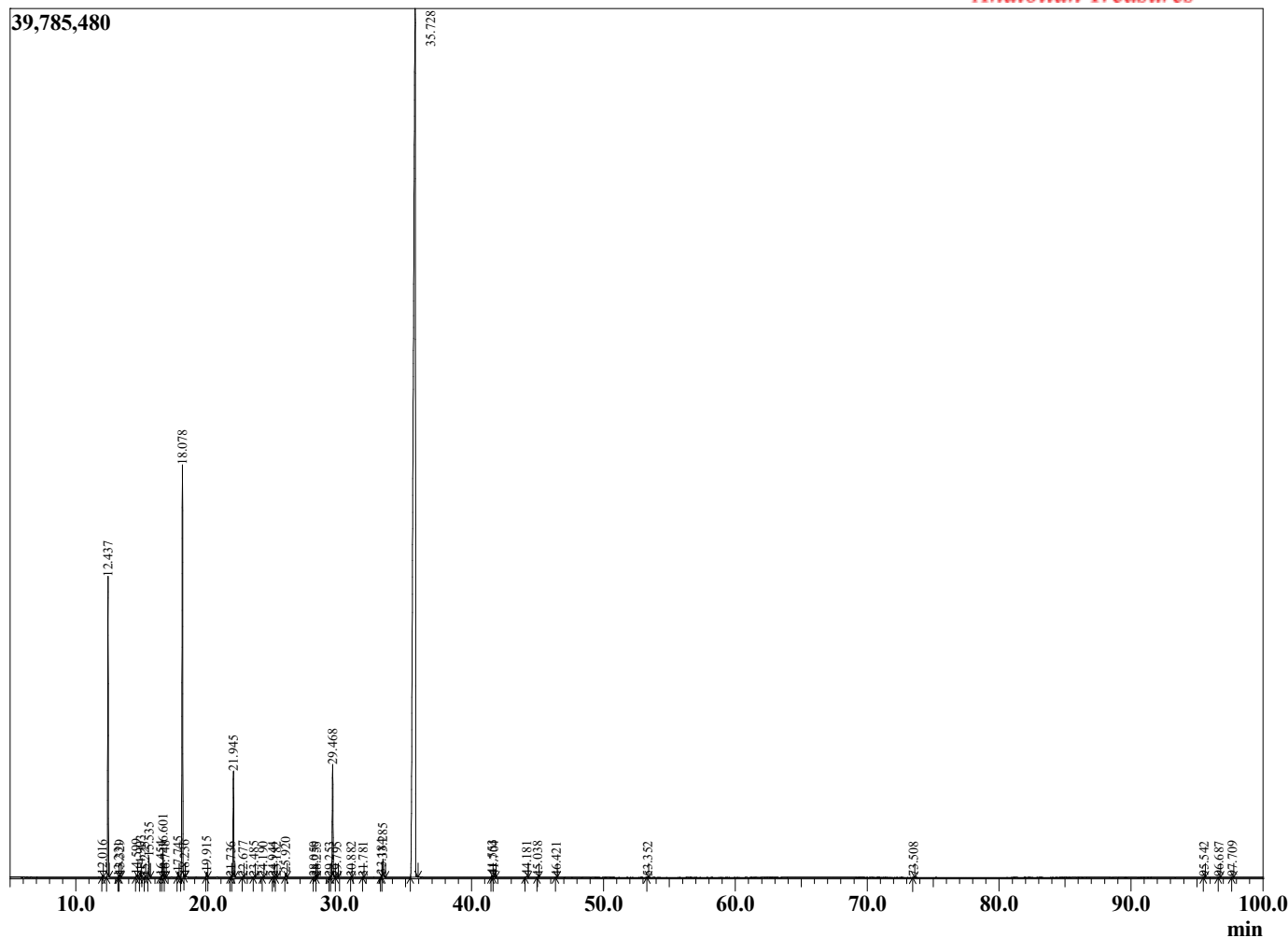
Sample Information

Sample Type : Essential Oil  
 Sample Name : Foeniculum vulgare  
 Injection : 0.10  
 Volume :

Fennel Sweet  
 Lot# EGE26-EK  
 Country: Egypt



Chromatogram Foeniculum vulgare



R.Time	Name	Area%
12.016	alpha-Thujene	0.04
12.437	alpha-Pinene	6.69
13.231	alpha-Fenchene	0.01
13.329	Camphene	0.04
14.599	Sabinene	0.06
14.903	beta-Pinene	0.15
15.225	Camphene	0.01
15.535	Myrcene	0.46
16.454	Pseudolimonene	0.02
16.601	alpha-Phellandrene	0.68
16.748	delta-3-Carene	0.02
17.745	para-Cymene	0.13
18.078	Limonene	11.71
18.236	1,8-Cineole	0.02
19.915	gamma-Terpinene	0.13
21.736	Terpinolene	0.01
21.945	Fenchone	2.92
22.677	Linalool	0.01
23.485	Phenylethyl alcohol	0.01
24.190	cis-para-Mentha-2,8-dienol	0.01
24.944	cis-Limonene oxide	0.01
25.182	trans-para-Mentha-2,8-dienol	0.01
25.920	Camphor	0.12
28.050	Menthol	0.01
28.255	Terpinen-4-ol	0.01
29.253	alpha-Terpineol	0.01
29.468	Estragole	3.33
29.795	alpha-Phellandrene epoxide	0.01
30.882	trans-Carveol	0.01
31.781	cis-Carveol	0.01
33.184	cis-Anethole	0.07
33.285	para-Anisaldehyde	0.58
35.728	trans-Anethole	72.49
41.553	Unidentified	0.07
41.704	Anisyl methyl ketone	0.04
44.181	beta-Caryophyllene	0.04
45.038	trans-alpha-Bergamotene	0.02
46.421	trans-beta-Ocimene	0.01
53.352	Unidentified	0.01
73.508	meta-Camphorene	0.01
95.542	Unidentified	0.01
96.687	Unidentified	0.01
97.709	Unidentified	0.02
		100.00