

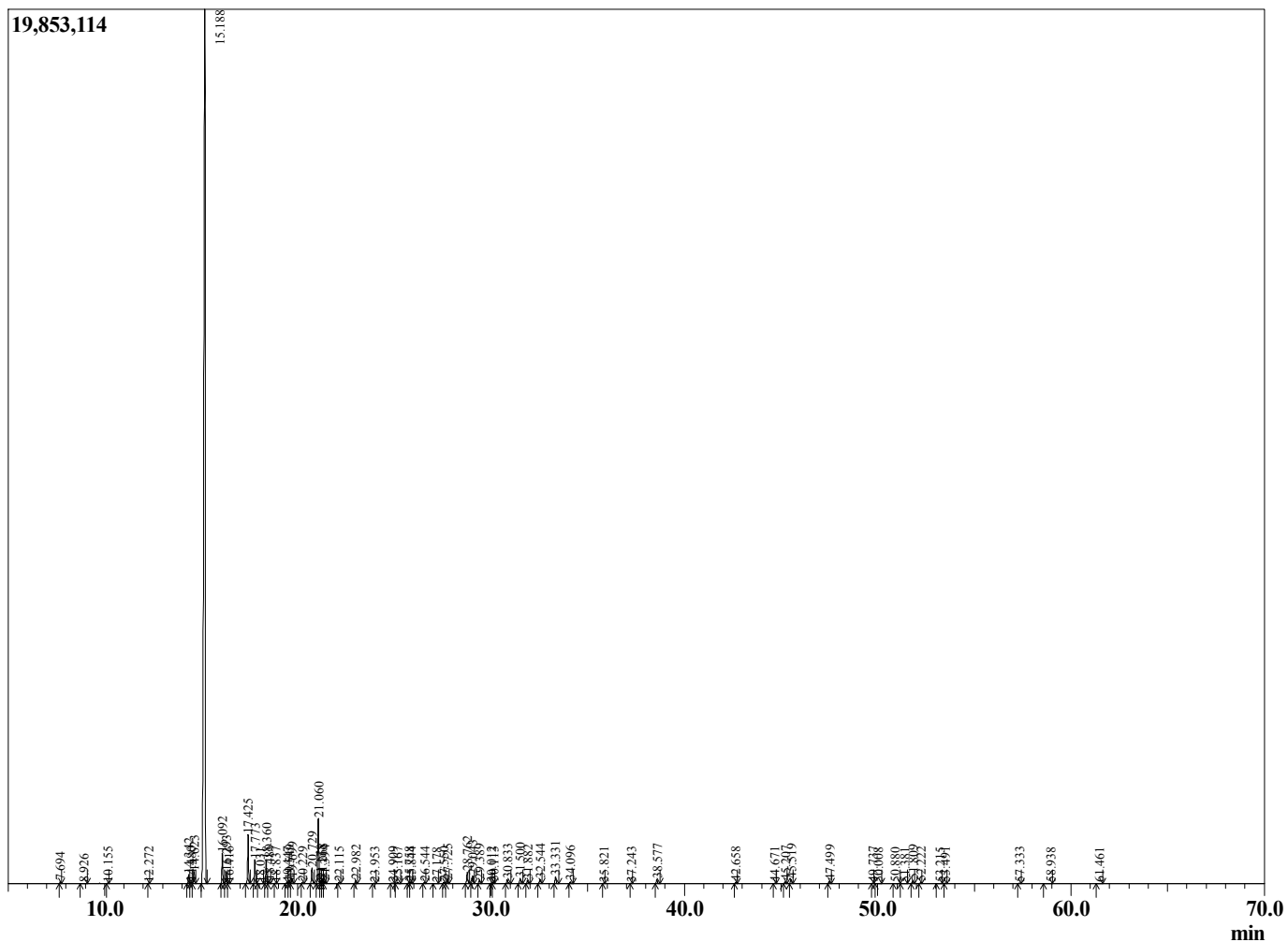
Sample Information

Sample Type : Essential Oil  
 Sample Name : Boswellia sacra



Frankincense Sacra  
 Lot# OMK5-KT  
 Country: Oman

Chromatogram Boswellia sacra



Peak	R.Time	Name	Area%
1	7.694	Toluene	0.09
2	8.926	Unidentified	0.01
3	10.155	6,6-Dimethylhepta-2,4-diene	0.04
4	12.272	Unidentified	0.03
5	14.342	Hashishene	0.49
6	14.480	Tricyclene	0.06
7	14.623	alpha-Thujene	0.69
8	15.188	alpha-Pinene	77.52
9	16.092	Camphene	1.67
10	16.293	Verbenene	0.68
11	16.416	Unidentified	0.05
12	17.425	Sabinene	2.80
13	17.773	beta-Pinene	1.39
14	18.031	Unidentified	0.03
15	18.360	Myrcene	1.37
16	18.489	Unidentified	0.15
17	18.837	Unidentified	0.03
18	19.447	1,3,8-p-Menthatriene	0.10
19	19.549	alpha-Phellandrene	0.22
20	19.699	3-Carene	0.33
21	20.229	alpha-Terpinene	0.08
22	20.729	para-Cymene	0.97
23	21.060	Limonene	4.02
24	21.178	beta-Phellandrene	0.17
25	21.268	1,8-Cineole	0.26
26	21.394	Z-beta-Ocimene	0.14
27	22.115	E-beta-Ocimene	0.07
28	22.982	gamma-Terpinene	0.18
29	23.953	Pinol	0.03
30	24.909	Thujol isomer	0.10
31	25.167	para-Cymenene	0.13
32	25.758	Linalool	0.08
33	25.844	alpha-Pinene oxide	0.09
34	26.544	Thujol	0.09
35	27.178	Unidentified	0.04
36	27.550	Borneol	0.08
37	27.725	alpha-Campholenal	0.26
38	28.762	trans-Pinocarveol	0.85
39	29.043	Verbenol	0.54
40	29.389	Unidentified	0.25
41	30.012	Unidentified	0.06
42	30.113	trans-Pinocamphone	0.08
43	30.833	p-Mentha-1,5-dien-8-ol	0.32
44	31.500	Terpinen-4-ol	0.36
45	31.882	para-Cymen-8-ol	0.22
46	32.544	Myrtenol	0.39
47	33.331	Verbenone	0.49
48	34.096	trans-Carveol	0.14
49	35.821	Carvone	0.03
50	37.243	3,5-Dimethoxytoluene	0.03
51	38.577	Bornyl acetate	0.32
52	42.658	alpha-Terpinyl acetate	0.08
53	44.671	alpha-Copaene	0.04
54	45.207	beta-Bourbonene	0.13
55	45.519	beta-Elementene	0.29
56	47.499	beta-Caryophyllene	0.16

R.Time	Name	Area%
49.737	alpha-Humulene	0.06
50.008	Allaromadendrene	0.03
50.880	Unidentified	0.04
51.381	Unidentified	0.03
51.809	beta-Selinene	0.21
52.222	alpha-Selinene	0.07
53.215	gamma-Cadinene	0.03
53.491	delta-Cadinene	0.05
57.333	Caryophyllene oxide	0.07
58.938	Humulene epoxide	0.03
61.461	alpha-Eudesmol	0.04
		100.00