

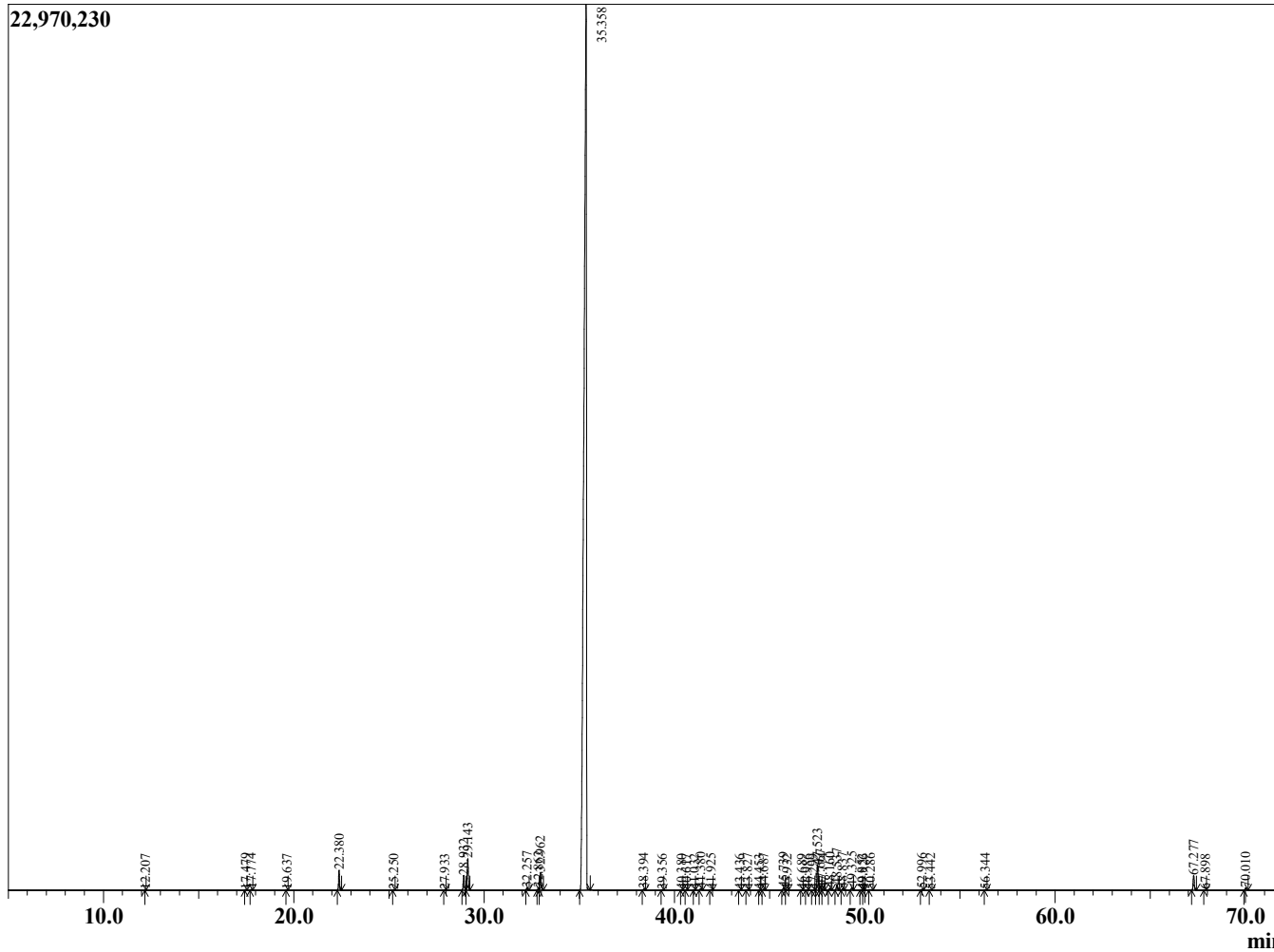
Sample Information

Sample Type : Essential Oil
 Sample Name : Pimpinella anisum
 Injection Volume : 0.10

Anise Seed
 Lot# EGE10-EH
 Country: Egypt



Chromatogram Pimpinella anisum



R.Time	Name	Area%
4.013	3-Methylbutanal	0.02
4.119	2-Methylbutanal	0.02
12.207	alpha-Pinene	0.00
17.479	para-Cymene	0.02
17.774	Limonene	0.03
19.637	gamma-Terpinene	0.01
22.380	Linalool	0.81
25.250	Geijeren	0.02
27.933	Terpinen-4-ol	0.01
28.932	alpha-Terpineol	0.69
29.143	Methyl chavicol	1.44
32.257	Carvone	0.10
32.862	(Z)-Anethole	0.11
32.962	para-Anisaldehyde	0.87
35.358	(E)-Anethole	92.00
38.394	delta-Elemene	0.06
39.356	alpha-Longipinene	0.01
40.380	Unidentified	0.02
40.617	alpha-Ylangene	0.02
41.032	alpha-Copaene	0.01
41.380	Anisyl methyl ketone	0.08
41.925	beta-Elemene	0.03
43.436	cis-alpha-Bergamotene	0.02
43.827	beta-Caryophyllene	0.03
44.453	Unidentified	0.01
44.687	trans-alpha-Bergamotene	0.06
45.739	alpha-Himachalene	0.13
45.932	trans-beta-Farnesene	0.01
46.689	Unidentified	0.01
46.986	Unidentified	0.01
47.299	Unidentified	0.01
47.523	gamma-Himachalene	1.28
47.667	Ar-Curcumene	0.23
47.774	Unidentified	0.05
48.160	Unidentified	0.08
48.537	alpha-Zingiberene	0.28
48.837	beta-Himachalene	0.07
49.325	beta-Bisabolene	0.15
49.852	Unidentified	0.01
49.926	delta-Cadinene	0.01
50.286	beta-Sesquiphellandrene	0.05
52.996	Unidentified	0.05
53.442	Unidentified	0.02
56.344	Unidentified	0.02
67.277	trans-Pseudoisoeugenyl 2-methylbutyrate	0.74
67.898	Phytone	0.01
70.010	Epoxypseudoisoeugenyl 2-methylbutyrate	0.12
93.784	Unidentified	0.02
94.304	Unidentified	0.01
94.886	Unidentified	0.02
95.135	Unidentified isomer I	0.04
96.283	Unidentified isomer I	0.03
		100.00