

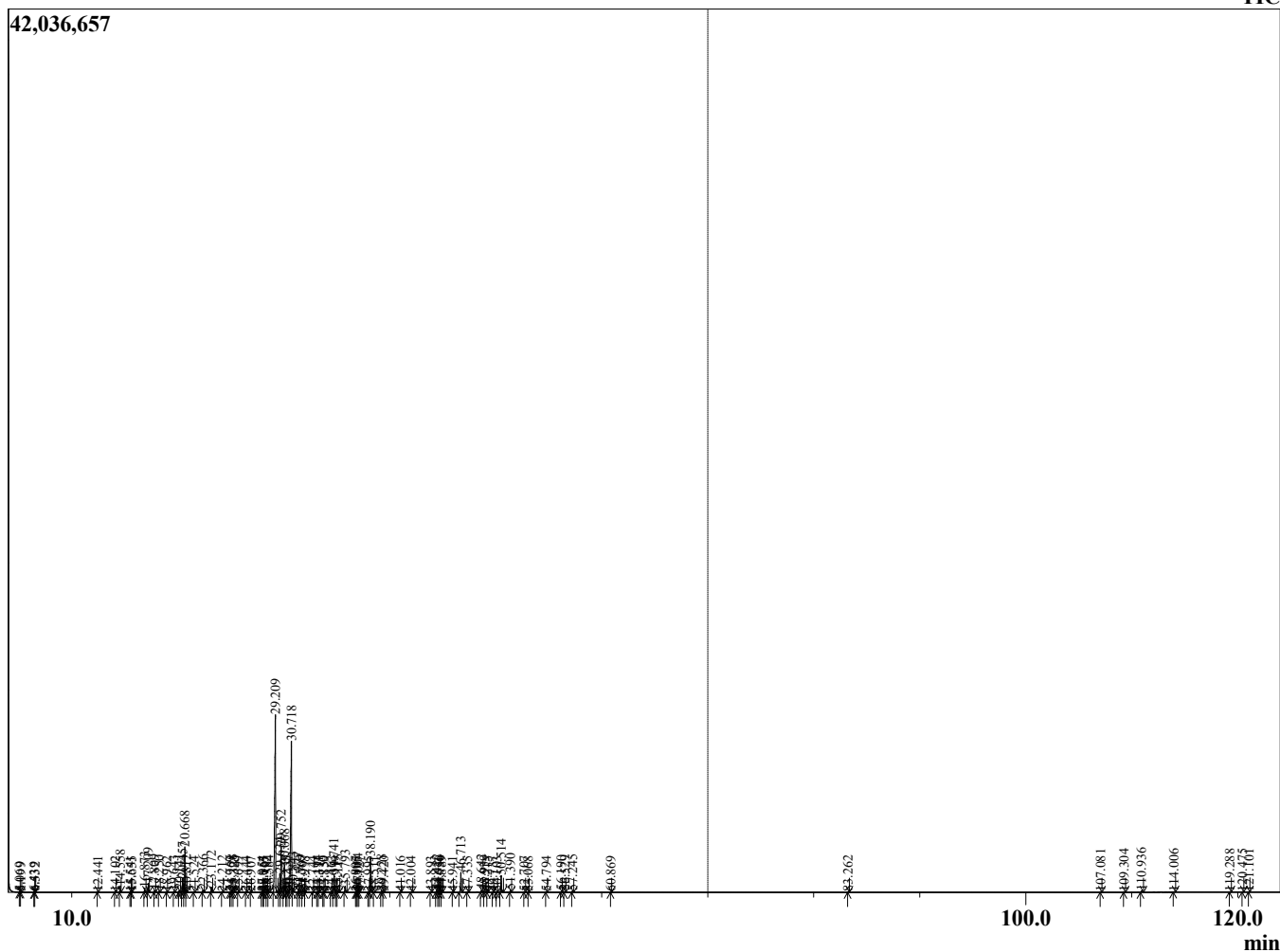
Sample Information

Sample Type : Essential Oil
 Sample Name : Mentha piperita
 Injection Volume : 0.10

Peppermint CO2
 Lot#: 2USW06-WE
 Country: USA



Chromatogram Mentha piperita



R.Time	Name	Area%
5.069	3-Methylbutanal	0.00
5.199	2-Methylbutanal	0.01
6.439	1-Pentanol	0.01
6.532	2-Methylbutanol	0.01
12.441	2,5-Diethyltetrahydrofuran	0.02
14.102	alpha-Thujene	0.03
14.558	alpha-Pinene	0.60
15.541	Camphene	0.02
15.655	3-Methylcyclohexanone	0.01
16.873	Sabinene	0.42
17.209	beta-Pinene	0.88
17.809	Myrcene	0.18
18.250	3-Octanol	0.13
18.962	alpha-Phellandrene	0.01
19.643	alpha-Terpinene	0.11
20.141	para-Cymene	0.19
20.457	Limonene	1.52
20.668	1,8-Cineole	4.94
20.812	cis-beta-Ocimene	0.17
21.524	trans-beta-Ocimene	0.04
22.366	gamma-Terpinene	0.19
23.172	trans-Sabinene hydrate	0.61
24.212	Terpinolene	0.08
24.969	3-Nonanol	0.02
25.128	Linalool	0.17
25.325	2-Methylbutyl-2-methylbutyrate	0.11
25.699	3-Methylbutyl-2-methylbutyrate	0.03
26.444	3-Octyl acetate	0.02
26.907	cis-para-Menth-2-en-1-ol	0.02
27.954	trans-Sabinol	0.04
28.067	trans-Pinocarveol	0.02
28.165	trans-para-Menth-2-en-1-ol	0.02
28.382	trans-Verbenol	0.02
28.584	Isopulegol	0.12
29.209	Menthone	32.31
29.634	Menthofuran	2.28
29.752	Isomenthone	5.57
30.068	Neomenthol	3.38
30.235	Borneol	0.02
30.437	trans-Isopulegone	0.13
30.718	Menthol	28.35
30.843	Terpinen-4-ol	0.54
31.377	Isomenthol	0.39
31.569	Neoisomenthol	0.12
31.797	alpha-Terpineol	0.29
31.998	Unidentified	0.01
32.744	Unidentified	0.02
33.194	Unidentified	0.08
33.311	Unidentified	0.04
33.730	Unidentified	0.01
33.859	Citronellol	0.01
34.462	cis-3-Hexenyl isovalerate	0.04
34.741	Pulegone	2.25
34.919	Unidentified	0.05
35.115	Carvone	0.19
35.793	Piperitone	0.76

R.Time	Name	Area%
36.807	Unidentified	0.01
36.905	Isopulegol acetate	0.01
37.004	Neomenthyl acetate	0.33
37.127	Unidentified	0.02
37.995	trans-Anethole	0.04
38.190	Menthyl acetate	4.44
38.511	Unidentified	0.03
39.228	Isomenthyl acetate	0.20
39.420	Dihydrocarveol acetate	0.02
41.016	delta-Elemene	0.02
42.004	Menthalactone isomer	0.03
43.893	alpha-Copaene	0.04
44.422	beta-Bourbonene	0.29
44.631	alpha-Bourbonene	0.03
44.750	beta-Elemene	0.13
44.889	cis-Jasmone	0.04
45.941	Unidentified	0.01
46.713	beta-Caryophyllene	2.70
47.335	beta-Copaene	0.05
48.642	trans-beta-Farnesene	0.24
48.939	alpha-Humulene	0.11
49.215	Alloaromadendrene	0.01
49.737	Germacrene D isomer	0.02
50.103	gamma-Murolene	0.01
50.514	Germacrene D	2.23
51.390	Bicyclogermacrene	0.30
52.707	delta-Cadinene	0.06
53.068	Unidentified	0.01
54.794	Unidentified	0.04
56.190	Spathulenol	0.12
56.529	Caryophyllene oxide	0.12
57.245	Viridiflorol	0.20
60.869	Unidentified	0.01
83.262	Phytol	0.07
107.081	Unidentified	0.03
109.304	Pyhtol acetate	0.02
110.936	Squalene	0.21
114.006	Unidentified	0.06
119.288	Unidentified	0.02
120.475	Unidentified	0.03
121.101	Vitamin E	0.02
		100.00