

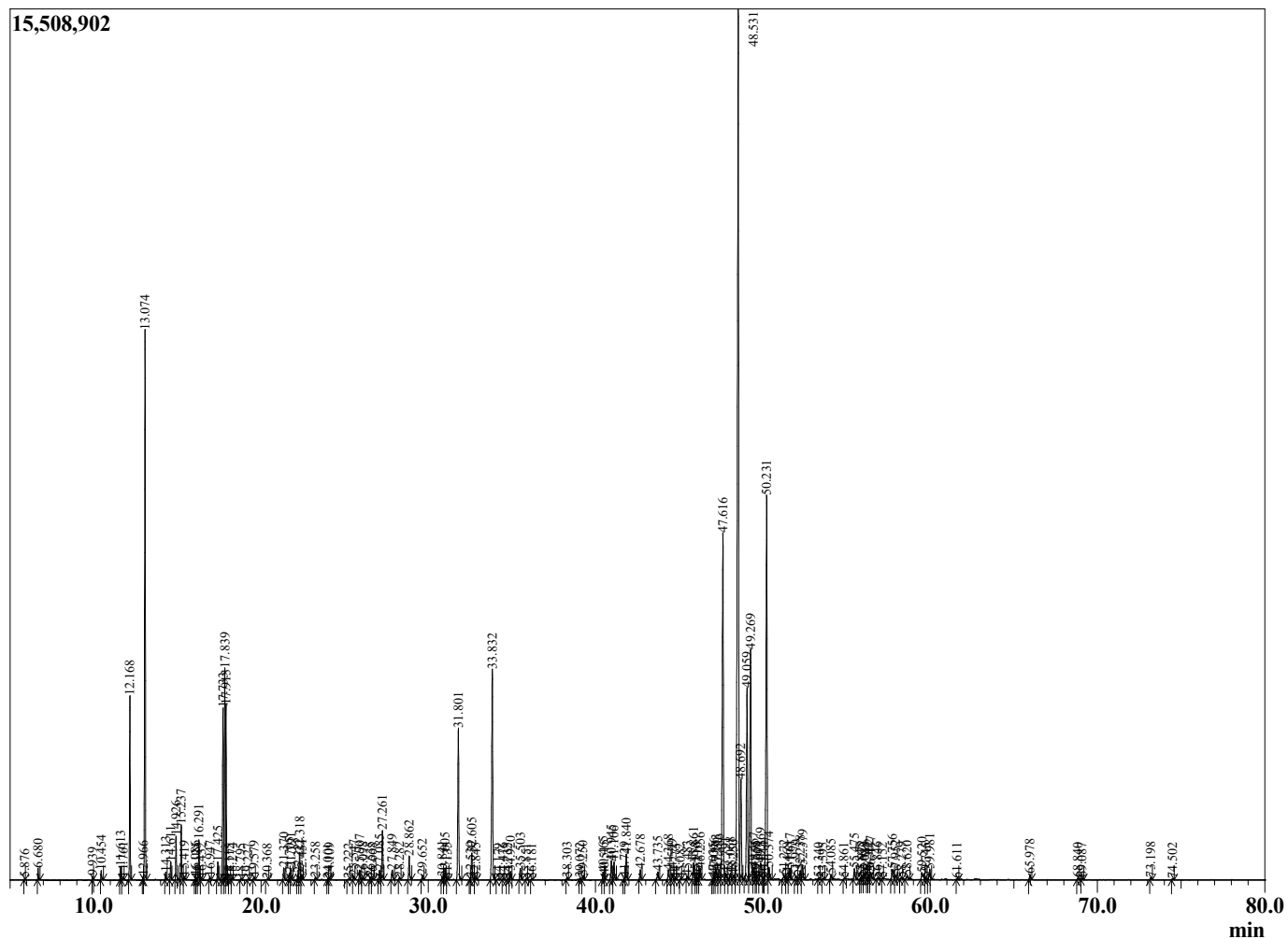
Sample Information

Sample Type : Essential Oil
 Sample Name : Zingiber officinale
 Injection : 0.10
 Volume :

Ginger Fresh
 Lot# INE12-EK
 Country: Indonesia



Chromatogram Zingiber officinale



R.Time	Name	Area%
3.585	2-Methyl-3-buten-2-ol	0.01
4.002	3-Methylbutanal	0.01
4.105	2-Methylbutanal	0.01
5.876	Toluene	0.02
6.680	Hexanal	0.14
9.939	2-Heptanone	0.05
10.454	Heptan-2-ol	0.13
11.613	Tricyclene	0.19
11.761	alpha-Thujene	0.04
12.168	alpha-Pinene	2.67
12.966	alpha-Fenchene	0.05
13.074	Camphene	8.76
14.313	Sabinene	0.13
14.611	beta-Pinene	0.29
14.926	6-Methyl-hept-5-en-2-one	0.70
15.237	Myrcene	0.90
15.419	6-Methyl-hept-5-en-2-ol	0.06
16.086	Octanal	0.06
16.125	Pseudolimonene	0.03
16.291	alpha-Phellandrene	0.66
16.432	delta-3-Carene	0.04
16.947	alpha-Terpinene	0.06
17.425	para-Cymene	0.31
17.733	Limonene	3.20
17.839	beta-Phellandrene	3.84
17.913	1,8-Cineole	2.58
18.115	cis-beta-Ocimene	0.01
18.274	2-Heptyl acetate	0.02
18.795	trans-beta-Ocimene	0.02
19.227	Bergamal	0.02
19.579	gamma-Terpinene	0.06
20.368	trans-Sabinene hydrate	0.02
21.370	Terpinolene	0.22
21.705	2-Nonanone	0.12
21.791	Rosefuran	0.22
22.222	Unidentified	0.11
22.318	Linalool	0.53
22.451	2-Nonanol	0.09
23.258	Unidentified	0.05
24.001	cis-para-Menth-2-en-1-ol	0.02
24.109	Unidentified	0.02
25.222	trans-para-Menth-2-en-1-ol	0.02
25.547	Camphor	0.08
25.907	Citronellal	0.19
26.098	trans-beta-Terpineol	0.06
26.535	Isoneal	0.06
26.668	Isoborneol	0.03
27.085	Rose furan oxide	0.19
27.261	Borneol	1.00
27.849	Terpinen-4-ol	0.23
28.282	Unidentified	0.05
28.862	alpha-Terpineol	0.49
29.652	Decanal	0.10
30.841	Nerol	0.06
31.005	Citronellol	0.24
31.135	Bornyl formate	0.02

R.Time	Name	Area%
31.801	Neral	3.16
32.530	Unidentified	0.03
32.605	Geraniol	0.57
32.845	Piperitone	0.03
33.832	Geranial	4.56
34.179	Citronellyl formate	0.02
34.476	Phellandral	0.02
34.732	Unidentified	0.02
34.920	Bornyl acetate	0.17
35.503	2-Undecanone	0.24
35.851	Geranyl formate	0.02
36.181	Methyl nonyl carbinol	0.02
38.303	delta-Elemene	0.05
39.072	alpha-Cubebene	0.03
39.250	Citronellyl acetate	0.07
40.465	Isoledene	0.18
40.515	Cyclosativene	0.06
40.945	alpha-Copaene	0.43
41.106	Geranyl acetate	0.38
41.729	Unidentified	0.05
41.840	beta-Elemene	0.58
42.678	alpha-Funebrene	0.21
43.735	beta-Caryophyllene	0.20
44.368	gamma-Elemene	0.26
44.599	trans-alpha-Bergamotene	0.11
44.773	Unidentified	0.02
45.082	Sesquisabinene	0.02
45.483	Unidentified	0.06
45.861	trans-beta-Farnesene	0.43
45.978	alpha-Humulene	0.04
46.110	Unidentified	0.02
46.256	Alloaromodendrene	0.27
47.035	trans-Cadina-1(6),4-diene	0.02
47.096	Unidentified	0.13
47.203	gamma-Murolene	0.27
47.386	gamma-Curcumene	0.27
47.616	Ar-Curcumene	8.48
47.791	Isocaryophyllene	0.21
48.068	beta-Selinene	0.16
48.250	Valencene	0.13
48.531	alpha-Zingiberene	23.27
48.692	trans-Muurolo-4(14),5-diene	2.32
49.059	trans,trans-alpha-Farnesene	4.32
49.269	beta-Bisabolene	5.43
49.467	Unidentified	0.28
49.555	Unidentified	0.04
49.668	Cubebol	0.05
49.869	Unidentified	0.53
50.044	cis-Calamenene	0.03
50.231	beta-Sesquiphellandrene	8.88
50.374	trans-gamma-Bisabolene	0.27
51.272	Unidentified	0.13
51.468	Unidentified	0.03
51.617	alpha-Elemol	0.25
51.979	trans-Sesquisabinene hydrate	0.10
52.238	Germacrene B	0.21
52.379	trans-Nerolidol	0.32
53.340	Ar-Tumerol	0.03
53.595	Caryophyllene oxide	0.03
54.085	7-epi-cis-sesquisabinene hydrate analogue	0.11
54.861	Unidentified	0.02
55.475	cis-Zingiberenol	0.24

R.Time	Name	Area%
55.845	Unidentified	0.02
55.922	10-epi-gamma-Eudesmol	0.06
56.088	Unidentified	0.06
56.247	Unidentified	0.03
56.362	Unidentified	0.09
56.447	trans-Zingiberenol	0.19
56.846	Zingerone	0.04
57.152	epi-alpha-Muurolol	0.02
57.756	alpha-Eudesmol	0.31
57.952	Unidentified	0.10
58.279	Intermedeol	0.04
58.620	beta-Bisabolol	0.10
59.520	trans-Zingiberenol	0.23
59.745	Unidentified	0.04
59.981	Unidentified	0.25
61.611	cis-Nuciferol	0.02
65.978	Unidentified	0.11
68.840	Unidentified	0.04
69.087	Unidentified	0.03
73.198	geranyl-para-Cymene	0.05
74.502	geranyl-alpha-Terpinene	0.03
		100.00