

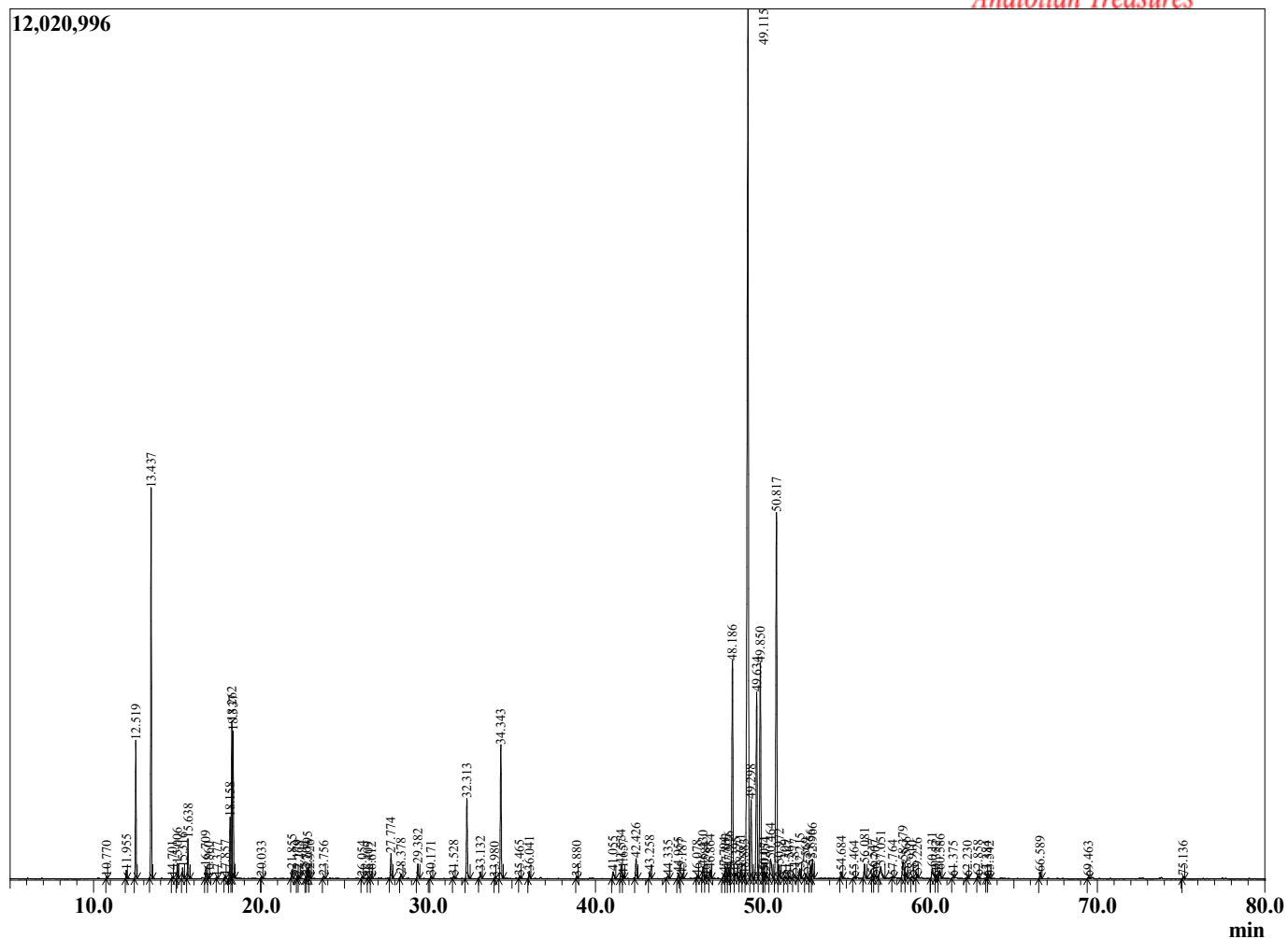
Sample Information

Sample Type : Essential Oil
 Sample Name : Zingiber officinale
 Injection Volume : 0.10

Ginger Fresh Madagascar
 Lot# MAZ12-ZH
 Country: Madagascar



Chromatogram Zingiber officinale



R.Time	Name	Area%
10.770	Heptan-2-ol	0.04
11.955	3-Methyl Apopinene	0.16
12.519	alpha-Pinene	2.56
13.437	Camphene	7.62
14.701	Sabinene	0.03
15.006	beta-Pinene	0.31
15.316	6-methyl-Hept-5-en-2-one	0.22
15.638	Myrcene	0.81
16.709	alpha-Phellandrene	0.25
16.860	delta-3-Carene	0.02
17.377	delta-4-Carene	0.03
17.857	para-Cymene	0.06
18.158	Limonene	1.40
18.262	beta-Phellandrene	3.49
18.337	1,8-cineole	3.06
20.033	gamma-Terpinene	0.05
21.855	Terpinolene	0.20
22.179	2-Nonanone	0.07
22.268	Unidentified	0.04
22.704	Unidentified	0.05
22.795	Linalool	0.26
22.926	Nonan-2-ol	0.06
23.756	Unidentified	0.07
26.054	Camphor	0.04
26.409	Citronellal	0.03
26.612	Camphene hydrate	0.04
27.774	Borneol	0.60
28.378	Terpinen-4-ol	0.14
29.382	alpha-Terpineol	0.39
30.171	Decanal	0.06
31.528	Citronellol	0.06
32.313	Neral	1.97
33.132	Geraniol	0.19
33.980	Unidentified	0.03
34.343	Geranial	3.35
35.465	Bornyl acetate	0.07
36.041	Nonyl methyl ketone	0.18
38.880	delta-Elementene	0.05
41.055	Cyclosativene	0.25
41.534	alpha-Copene	0.39
41.657	Geranyl acetate	0.10
42.426	beta-Elementene	0.56
43.258	alpha-Funebrene	0.20
44.335	beta-Caryophyllene	0.08
44.955	gamma-Elementene	0.16
45.187	alpha-cis-Bergamotene	0.10
46.078	Caryophyllene analog	0.07
46.430	trans-beta-Farnesene	0.39
46.584	alpha-Humulene	0.04
46.864	9-epi-beta-Caryophyllene	0.24
47.704	Unidentified	0.19
47.803	gamma-Cadinene	0.30
47.976	gamma-Curcumene	0.35
48.186	Ar-Curcumene	6.22
48.395	Aristolochene	0.21
48.671	beta-Selinene	0.23

R.Time	Name	Area%
48.883	Valencene	0.11
49.115	alpha-Zingiberene	30.44
49.298	gamma-Cadinene	2.32
49.634	alpha-Farnesene	5.07
49.850	beta-Bisabolene	6.29
50.071	cis-Muurolo-4(14),5-diene	0.18
50.154	Isogermacrene D	0.16
50.464	delta-Cadinene	0.79
50.817	beta-Sesquiphellandrene	10.87
50.972	trans-gamma-Bisabolene	0.36
51.309	trans-Cadina-1,4-diene	0.05
51.567	Selina-4(15),7(11)-diene	0.07
51.877	Unidentified	0.11
52.215	alpha-Elemol	0.25
52.569	trans-Sesquisabinene hydrate	0.13
52.856	Germacrene B	0.35
52.966	trans-Nerolidol	0.52
54.684	cis-Sesquisabinene hydrate	0.18
55.464	Selina-5,11-diene	0.04
56.081	Sesquisabinene hydrate isomer	0.39
56.547	gamma-Eudesmol	0.12
56.707	Unidentified	0.11
57.051	Unidentified	0.60
57.764	Unidentified	0.05
58.379	alpha-Eudesmol	0.66
58.566	Intermedeol	0.16
58.910	Unidentified	0.04
59.226	beta-Bisabolol	0.12
60.131	Unidentified	0.44
60.352	Unidentified	0.05
60.586	Unidentified	0.25
61.375	Unidentified	0.04
62.230	Unidentified	0.04
62.858	(E,E)-Farnesal	0.06
63.384	Unidentified	0.04
63.542	Unidentified	0.07
66.589	Unidentified	0.19
69.463	Unidentified	0.05
75.136	geranyl-alpha-Terpinene	0.06
83.707	Unidentified	0.04
86.165	Unidentified	0.04
		100.00