

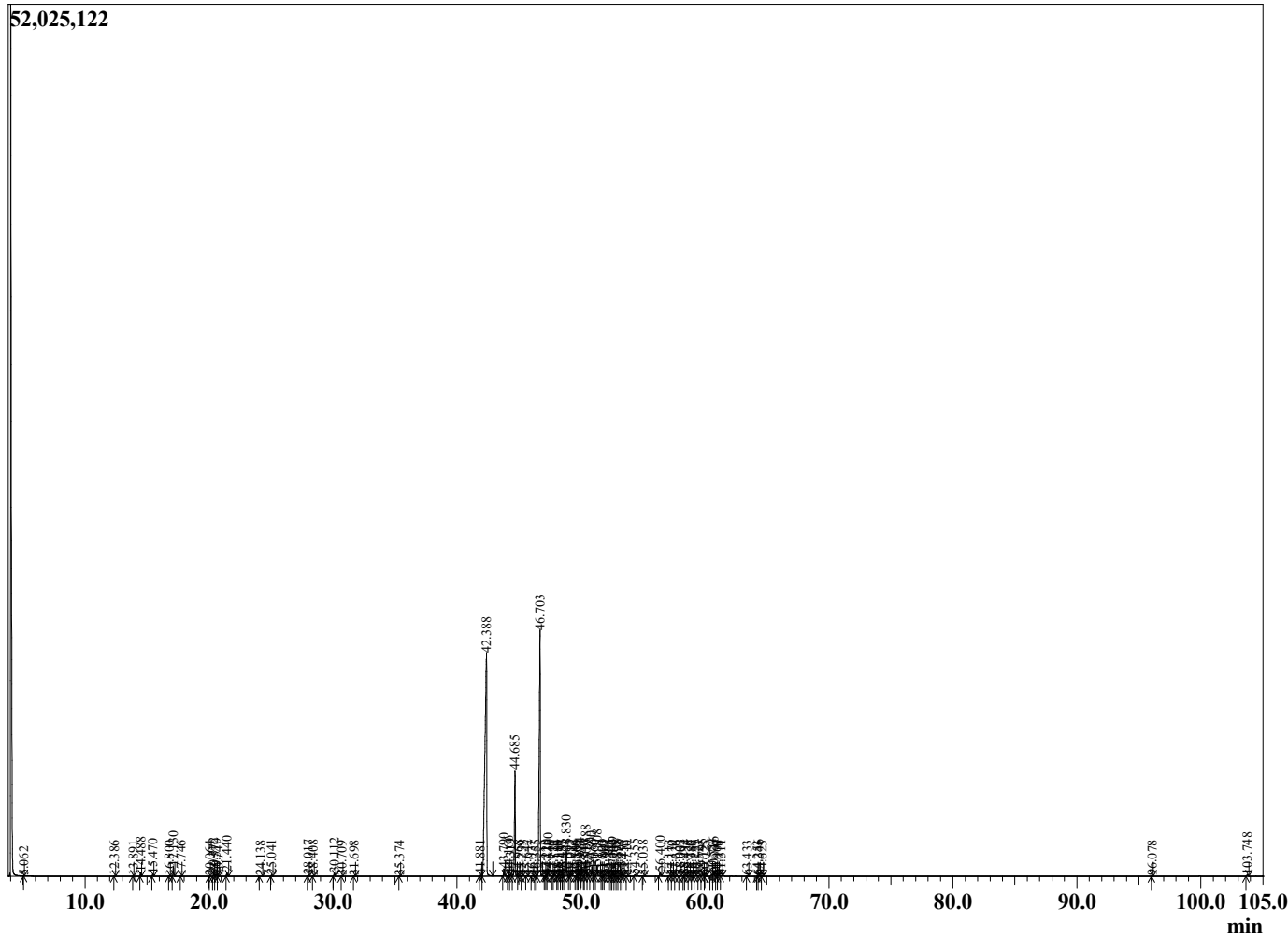
Sample Information

Sample Type : Essential Oil
 Sample Name : Ocimum sanctum
 Injection Volume : 0.10

Holy Basil
 Lot# IDN12-NE
 Country: India



Chromatogram Ocimum sanctum



R.Time	Name	Area%
5.062	3-Methylbutanal	0.00
12.386	2,5-Diethyltetrahydrofuran	0.02
13.891	Tricyclene	0.01
14.488	alpha-Pinene	0.24
15.470	Camphene	0.13
16.800	Sabinene	0.02
17.130	beta-Pinene	0.63
17.746	Myrcene	0.01
20.064	para-Cymene	0.00
20.372	Limonene	0.18
20.570	1,8-Cineole	0.13
20.741	(Z)-beta-Ocimene	0.01
21.440	(E)-beta-Ocimene	0.30
24.138	Terpinolene	0.01
25.041	Linalool	0.09
28.017	Geijeren	0.06
28.408	Camphor	0.03
30.112	Borneol	0.24
30.709	Terpinen-4-ol	0.01
31.698	alpha-Terpineol	0.02
35.374	Geraniol	0.01
41.881	alpah-Cubebene	0.07
42.388	Eugenol	46.83
43.790	alpha-Copaene	0.61
44.166	Elemene analog	0.33
44.319	beta-Bourbonene	0.13
44.685	beta-Elemene	9.93
44.968	trans-Muurolo-4(14),5-diene	0.03
45.239	Methyleugenol	0.03
45.642	cis-beta-Caryophyllene	0.05
46.037	Unidentified	0.01
46.355	alpha-Barbatene	0.04
46.703	trans-beta-Caryophyllene	30.01
47.113	Unidentified	0.02
47.220	beta-Copaene	0.04
47.360	trans-alpha-Bergamotene	0.62
47.710	Isobazzanene	0.01
47.823	Unidentified	0.01
48.110	Unidentified	0.01
48.188	trans-Muurolo-3,5-diene	0.02
48.437	Humulen-(v1)	0.10
48.485	(E)-beta-Farnesene	0.06
48.830	alpha-Humulene	2.18
49.095	Alloaromodendrene	0.03
49.212	cis-Muurolo-4(14),5-diene	0.04
49.580	Unidentified	0.01
49.705	Drima-7,9(11)-diene	0.01
49.884	Selina-4,11-diene	0.23
49.977	trans-Cadina-1(6),4-diene	0.05
50.240	delta-Amorphene	0.01
50.388	Germacrene D	1.33
50.519	trans-beta-Bergamotene	0.06
50.890	beta-Selinene	0.87
51.060	gamma-Amorphene	0.05
51.308	alpha-Selinene	1.08
51.690	Unidentified	0.02

R.Time	Name	Area%
51.803	Unidentified	0.05
51.962	Unidentified	0.21
52.305	gamma-Cadinene	0.05
52.442	Cubebol	0.04
52.589	delta-Cadinene	0.32
52.709	Unidentified	0.05
52.898	beta-Sesquiphellandrene	0.04
53.072	(E)-gamma-Bisabolene	0.03
53.297	Kessane	0.14
53.452	trans-Cadina-1,4-diene	0.01
53.710	alpha-Cadinene	0.01
54.355	alpha-Elemol	0.12
55.038	(E)-Nerolidol	0.05
56.400	Caryophyllene oxide	0.40
57.113	Viridiflorol	0.06
57.370	Unidentified	0.02
57.636	Unidentified	0.02
58.002	Humulene epoxide II	0.06
58.292	Epicubenol	0.03
58.434	Maaliol	0.07
58.726	Humulane-1,6-dien-3-ol	0.01
58.986	Cubenol analog	0.01
59.225	gamma-Eudesmol	0.04
59.523	Unidentified	0.02
59.795	Unidentified	0.20
60.025	tau-Cadinol	0.02
60.554	Cubenol	0.20
60.716	Intermedeol	0.32
60.960	Unidentified	0.01
61.078	Unidentified	0.02
61.311	Unidentified	0.05
63.433	Unidentified	0.03
64.253	Unidentified	0.02
64.346	Unidentified	0.04
64.623	Unidentified	0.01
96.078	Unidentified	0.01
103.748	Unidentified	0.12
		100.00