

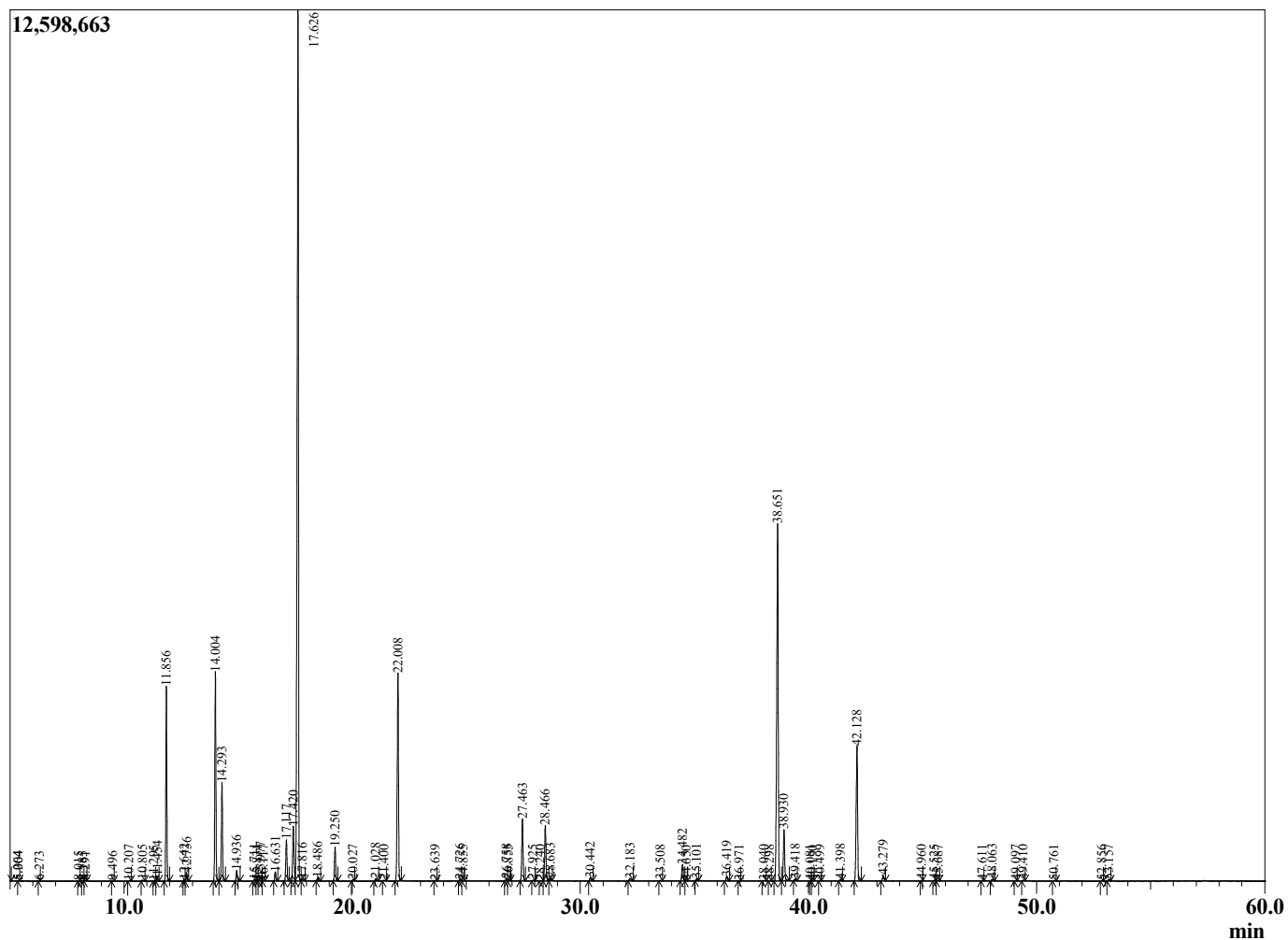
Sample Information

Sample Type : Essential Oil  
 Sample Name : Laurus nobilis  
 Injection Volume : 0.10

Laurel Bay  
 Lot# CRD22-DH  
 Country: Crete



Chromatogram Laurus nobilis



R.Time	Name	Area%
5.004	Methyl pyrrole	0.01
5.364	Ethyl isobutyrate	0.01
6.273	Isopropyl isobutyrate	0.01
8.015	Ethyl 2-methylbutyrate	0.01
8.185	Ethyl isovalerate	0.01
8.291	Hex-(3Z)-enol	0.02
9.496	Isopropyl 2-methylbutyrate	0.01
10.207	Heptan-2-ol	0.02
10.805	Isobutyl isobutyrate	0.03
11.295	Tricyclene	0.00
11.454	alpha-Thujene	0.14
11.856	alpha-Pinene	5.90
12.642	alpha-Fenchene	0.04
12.736	Camphene	0.28
14.004	Sabinene	6.95
14.293	beta-Pinene	3.25
14.936	Myrcene	0.39
15.711	Isobutyl 2-methylbutyrate	0.05
15.831	Pseudolimonene	0.02
15.977	alpha-Phellandrene	0.14
16.117	delta-3-Carene	0.02
16.631	alpha-Terpinene	0.33
17.117	para-Cymene	1.51
17.420	Limonene	2.34
17.626	1,8-Cineole	37.20
17.816	cis-beta-Ocimene	0.08
18.486	trans-beta-Ocimene	0.13
19.250	gamma-Terpinene	1.22
20.027	trans-Sabinene hydrate	0.04
21.028	Terpinolene	0.10
21.400	2-Nonanone	0.02
22.008	Linalool	8.12
23.639	cis-para-Menth-2-en-1-ol	0.02
24.726	trans-Pinocarveol	0.05
24.855	trans-para-Menth-2-en-1-ol	0.01
26.758	delta-Terpineol	0.08
26.855	Borneol	0.04
27.463	Terpinen-4-ol	2.50
27.925	Unidentified	0.02
28.240	Myrtenol	0.01
28.466	alpha-Terpineol	2.26
28.683	Estragole	0.10
30.442	Nerol	0.13
32.183	Linalyl acetate + Geraniol	0.13
33.508	Unidentified	0.02
34.482	Bornyl acetate	0.71
34.650	Isobornyl acetate	0.01
35.101	2-Undecanone	0.06
36.419	delta-Terpinyl acetate	0.19
36.971	Unidentified	0.01
38.040	Unidentified	0.03
38.298	Myrcen-8-yl acetate	0.02
38.651	alpha-Terpinyl acetate	16.46
38.930	Eugenol	2.10
39.418	Neryl acetate	0.07
40.081	alpha-Ylangene	0.01

R.Time	Name	Area%
40.190	alpha-Copaene	0.01
40.499	Unidentified	0.01
41.398	beta-Elemene	0.05
42.128	Methyleugenol	5.96
43.279	beta-Caryophyllene	0.24
44.960	(E)-Cinnamyl acetate	0.02
45.525	alpha-Humulene	0.03
45.687	Unidentified	0.01
47.611	beta-Selinene	0.02
48.063	Methyl isoeugenol	0.08
49.097	gamma-Cadinene	0.02
49.410	delta-Cadinene	0.03
50.761	(E)-alpha-Bisabolene	0.02
52.856	Spathulenol	0.02
53.157	Caryophyllene oxide	0.05
		100.00