

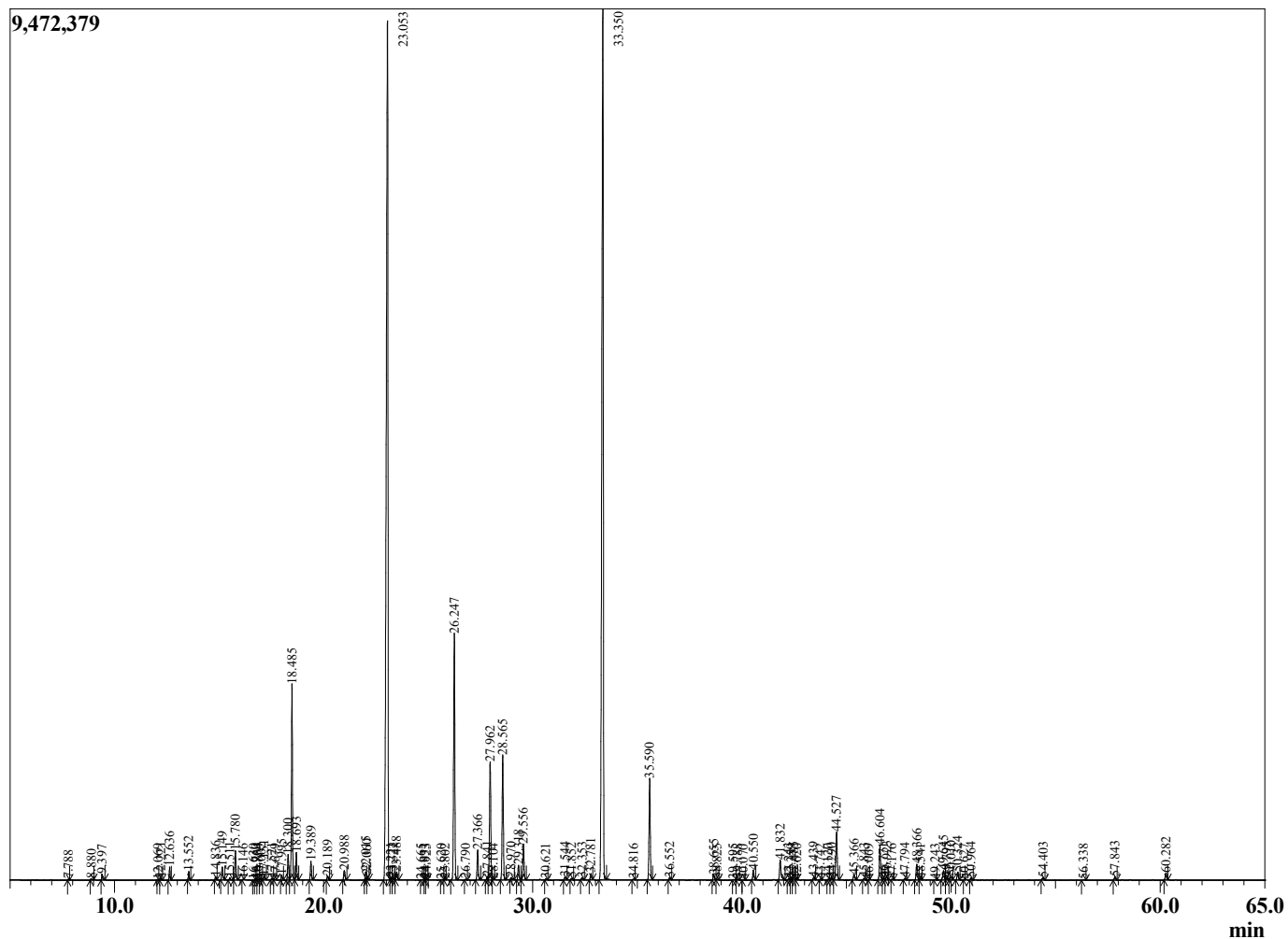
Sample Information

Sample Type : Essential Oil
 Sample Name : Lavandula hybrida
 Injection Volume : 0.10

Lavandin Grosso
 LO# FRC22-CK
 Country: France



Chromatogram Lavandula hybrida



| R.Time | Name | Area% |
|--------|---------------------------------|-------|
| 4.135 | 3-Methylbutanal | 0.01 |
| 4.257 | Unidentified | 0.01 |
| 7.788 | Diola | 0.02 |
| 8.880 | Hex-(3Z)-enol | 0.04 |
| 9.397 | Hexanol | 0.12 |
| 12.069 | Tricyclene | 0.01 |
| 12.221 | alpha-Thujene | 0.05 |
| 12.636 | alpha-Pinene | 0.27 |
| 13.552 | Camphene | 0.19 |
| 14.836 | Sabinene | 0.07 |
| 15.149 | beta-Pinene | 0.37 |
| 15.511 | 3-Octanone | 0.06 |
| 15.780 | Myrcene | 0.74 |
| 16.146 | Butyl butyrate | 0.01 |
| 16.630 | Octanal | 0.01 |
| 16.760 | Unidentified | 0.01 |
| 16.854 | alpha-Phellandrene | 0.02 |
| 17.002 | delta-3-Carene | 0.04 |
| 17.151 | Hexyl acetate | 0.10 |
| 17.521 | alpha-Terpinene | 0.04 |
| 17.679 | ortho-Cymene | 0.01 |
| 17.995 | para-Cymene | 0.12 |
| 18.300 | Limonene | 0.65 |
| 18.485 | 1,8-cineole | 4.83 |
| 18.693 | cis-beta-Ocimene | 0.68 |
| 19.389 | trans-beta-Ocimene | 0.48 |
| 20.189 | gamma-Terpinene | 0.10 |
| 20.988 | cis-Linalool oxide (furanoid) | 0.27 |
| 22.015 | Terpinolene | 0.22 |
| 22.060 | trans-Linalool oxide (furanoid) | 0.09 |
| 23.053 | Linalool | 33.02 |
| 23.221 | Hotrienol | 0.05 |
| 23.322 | Hexyl propionate | 0.06 |
| 23.488 | 1-Octen-3-yl acetate | 0.21 |
| 24.665 | cis-para-Menth-2-en-1-ol | 0.01 |
| 24.833 | alpha-Campholenal | 0.01 |
| 24.923 | allo-Ocimene | 0.02 |
| 25.620 | Nopinone | 0.01 |
| 25.802 | trans-Pinocarveol | 0.02 |
| 26.247 | Camphor | 6.88 |
| 26.790 | Camphene hydrate | 0.02 |
| 27.366 | Lavandulol | 0.81 |
| 27.841 | delta-Terpineol | 0.09 |
| 27.962 | Borneol | 3.39 |
| 28.104 | cis-Linalool oxide (pyranoid) | 0.02 |
| 28.565 | Terpinen-4-ol | 3.46 |
| 28.970 | para-Cymen-8-ol | 0.08 |
| 29.318 | Hexyl butyrate | 0.41 |
| 29.556 | alpha-Terpinol | 1.03 |
| 30.621 | Octyl acetate | 0.02 |
| 31.544 | Nerol | 0.08 |
| 31.852 | Bornyl formate | 0.05 |
| 32.353 | Hexyl 2-methylbutyrate | 0.06 |
| 32.781 | Hexyl 3-methylbutyrate | 0.17 |
| 33.350 | Linalyl acetate | 30.87 |
| 34.816 | Unidentified | 0.02 |

| R.Time | Name | Area% |
|--------|-------------------------|--------|
| 35.590 | Lavandulyl acetate | 2.92 |
| 36.552 | Carvacrol | 0.07 |
| 38.655 | Hexyl tiglate | 0.15 |
| 38.825 | Unidentified | 0.02 |
| 39.595 | Unidentified | 0.01 |
| 39.788 | Unidentified | 0.03 |
| 40.070 | Eugenol | 0.01 |
| 40.550 | Neryl acetate | 0.29 |
| 41.832 | Geranyl acetate | 0.68 |
| 42.243 | beta-Bourbonene | 0.04 |
| 42.359 | Hexyl hexanoate | 0.01 |
| 42.485 | 7-epi-Sesquithujene | 0.09 |
| 42.620 | Unidentified | 0.02 |
| 43.439 | alpha-Funebrene | 0.08 |
| 43.742 | alpha-Gurjunene | 0.02 |
| 44.120 | cis-alpha-Bergamotene | 0.02 |
| 44.290 | Lavandulyl isobutyrate | 0.06 |
| 44.527 | beta-Caryophyllene | 1.64 |
| 45.366 | trans-alpha-Bergamotene | 0.18 |
| 45.843 | cis-beta-Farnesene | 0.04 |
| 46.069 | Unidentified | 0.01 |
| 46.604 | trans-beta-Farnesene | 1.05 |
| 46.771 | alpha-Humulene | 0.06 |
| 46.923 | Unidentified | 0.10 |
| 47.176 | cis-Cadina-1(6),4-diene | 0.02 |
| 47.794 | Dauca-5,8-diene | 0.05 |
| 48.366 | Germacrene D | 0.49 |
| 48.541 | trans-beta-Bergamotene | 0.03 |
| 49.243 | Bicyclogermacrene | 0.02 |
| 49.645 | Lavandulyl isovalerate | 0.34 |
| 49.795 | (E,E)-alpha-Farnesene | 0.09 |
| 50.010 | beta-Bisabolene | 0.11 |
| 50.324 | gamma-Cadinene | 0.24 |
| 50.627 | delta-Cadinene | 0.01 |
| 50.964 | beta-Sesquiphellandrene | 0.07 |
| 54.403 | Caryophyllene oxide | 0.08 |
| 56.338 | 1,10-di-epi-Cubenol | 0.02 |
| 57.843 | tau-Cadinol | 0.09 |
| 60.282 | alpha-Bisabolol | 0.21 |
| | | 100.00 |