

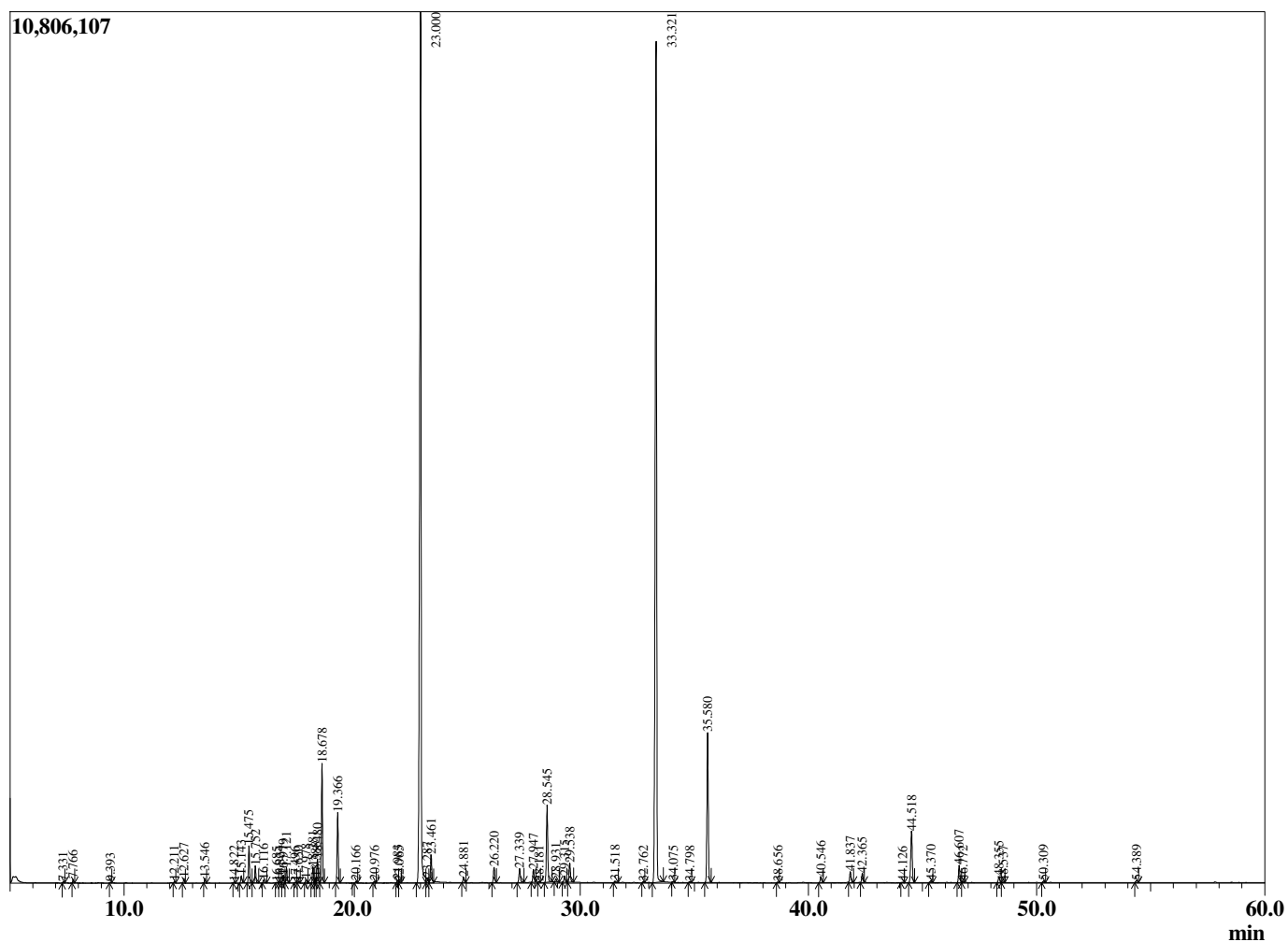
Sample Information

Sample Type : Essential Oil
 Sample Name : Lavandula angustifolia

Lavender French HA
 Lot# FRW30-RW
 Country: France



Chromatogram Lavandula angustifolia



R.Time	Name	Area%
7.331	Butyl acetate	0.03
7.766	Hexyl methyl ether	0.09
9.393	n-Hexanol	0.02
12.211	alpha-Thujene	0.05
12.627	alpha-Pinene	0.13
13.546	Camphene	0.14
14.822	Sabinene	0.02
15.143	beta-Pinene + 1-Octen-3-ol	0.24
15.475	3-Octanone	1.10
15.752	Myrcene	0.54
16.116	Butyl butyrate	0.11
16.685	Pseudolimonene	0.02
16.834	alpha-Phellandrene	0.03
16.979	delta-3-Carene	0.26
17.121	Hexyl acetate	0.48
17.496	alpha-Terpinene	0.02
17.650	ortho-Cymene	0.04
17.978	para-Cymene	0.12
18.281	Limonene	0.51
18.388	beta-Phellandrene	0.17
18.480	1,8-Cineole	0.80
18.678	cis-beta-Ocimene	3.75
19.366	trans-beta-Ocimene	2.29
20.166	gamma-Terpinene	0.06
20.976	cis-Linalool oxide (furanoid)	0.06
21.983	Terpinolene	0.10
22.065	trans-Linalool oxide (furanoid)	0.03
23.000	Linalool	36.51
23.287	Hexyl propionate	0.33
23.461	1-Octen-3-yl acetate	1.15
24.881	allo-Ocimene	0.20
26.220	Camphor	0.57
27.339	Lavandulol	0.57
27.947	Borneol	0.48
28.181	Undeca-1,3,5-triene	0.02
28.545	Terpinen-4-ol	2.91
28.931	Cryptone	0.11
29.315	Hexyl butyrate	0.24
29.538	alpha-Terpineol	0.74
31.518	Nerol	0.07
32.762	Cuminal	0.04
33.321	Linalyl acetate	34.44
34.075	Unidentified	0.04
34.798	Isopulegyl acetate	0.03
35.580	Lavandulyl acetate	5.76
38.656	Hexyl tiglate	0.02
40.546	Neryl acetate	0.23
41.837	Geranyl acetate	0.43
42.365	Hexyl hexanoate	0.36
44.126	cis-alpha-Bergamotene	0.02
44.518	beta-Caryophyllene	2.28
45.370	trans-alpha-Bergamotene	0.08
46.607	trans-beta-Farnesene	0.68
46.772	alpha-Humulene	0.05
48.355	Germacrene D	0.24
48.537	Farnesene isomer	0.02
50.309	gamma-Cadinene	0.07
54.389	Caryophyllene oxide	0.09
		100.00