

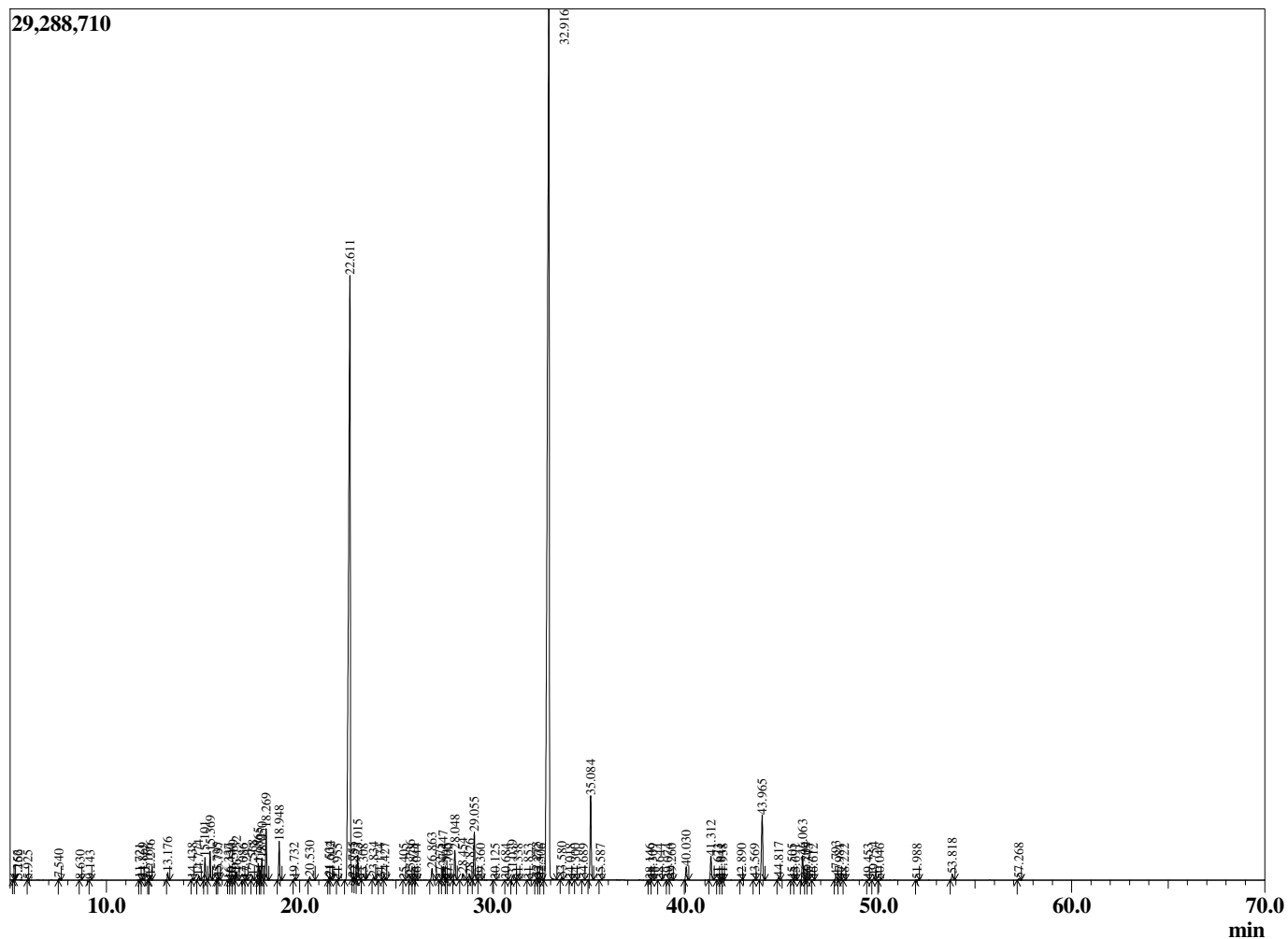
Sample Information

Sample Type : Essential Oil  
 Sample Name : Lavandula angustifolia  
 Injection Volume : 0.10

Lavender Kashmir  
 Lot# KAX01-XC  
 Country: Kashmir



Chromatogram Lavandula angustifolia



R.Time	Name	Area%
4.031	3-Methylbutanal	0.01
4.141	2-Methylbutanal	0.00
5.166	1-Pentanol	0.00
5.252	Heptane	0.00
5.925	Toluene	0.01
7.540	Hexyl methyl ether	0.04
8.630	Hex-(3Z)-enol	0.01
9.143	Hexanol	0.02
11.721	Tricyclene	0.02
11.869	alpha-Thujene	0.04
12.166	2,7-Dimethyloxepine	0.00
12.276	alpha-Pinene	0.10
13.176	Camphene	0.19
14.438	Sabinene	0.04
14.774	beta-Pinene + 1-Octen-3-ol	0.14
15.101	Octan-3-one	0.58
15.369	Myrcene	0.75
15.735	Butyl butyrate	0.03
15.797	3-Octanol	0.08
16.337	Dehydrolinalool oxide	0.01
16.430	alpha-Phellandrene	0.02
16.569	delta-3-Carene	0.11
16.732	Hexyl acetate	0.22
17.086	alpha-Terpinene	0.01
17.242	meta-Cymene	0.04
17.568	para-Cymene	0.12
17.865	Limonene	0.45
17.972	beta-Phellandrene	0.25
18.050	1,8-Cineole	0.62
18.269	(Z)-beta-Ocimene	1.39
18.948	(E)-beta-Ocimene	1.10
19.732	gamma-Terpinene	0.04
20.530	cis-Linalool oxide (furanoid)	0.11
21.534	Terpinolene	0.10
21.602	trans-Linalool oxide (furanoid)	0.06
21.955	para-Cymenene	0.01
22.611	Linalool	30.41
22.755	Hotrienol	0.02
22.853	Hexyl propionate	0.01
23.015	1-Octen-3-yl acetate	0.72
23.308	Heptyl acetate	0.01
23.834	3-Octyl acetate	0.09
24.174	cis-para-Menth-2-en-1-ol	0.02
24.427	allo-Ocimene	0.05
25.405	trans-para-Menth-2-en-1-ol	0.01
25.736	Camphor	0.15
25.878	Unidentified	0.02
26.044	Nerol oxide	0.01
26.863	Lavandulol	0.38
27.275	cis-Linalool oxide (pyranoid)	0.01
27.447	Borneol	0.44
27.595	trans-Linalool oxide (pyranoid)	0.01
27.700	1,3,5-Undecatriene	0.02
28.048	Terpinen-4-ol	0.95
28.454	Cryptone	0.23
28.826	Hexyl butyrate	0.15
29.055	alpha-Terpinene	1.54

R.Time	Name	Area%
29.360	Unidentified	0.01
30.125	Octyl acetate	0.01
30.684	trans-Carveol	0.01
31.039	Nerol	0.18
31.338	Bornyl formate	0.02
31.853	Hexyl 2-methylbutyrate	0.01
32.273	Cuminaldehyde	0.07
32.372	Carvone	0.02
32.506	Unidentified	0.03
32.916	Linalyl acetate	49.03
33.580	Unidentified	0.07
34.018	Geranial	0.01
34.300	Unidentified	0.01
34.689	Phellandral	0.02
35.084	Lavandulyl acetate + Bornyl acetate	2.88
35.587	Cymen-7-ol isomer	0.01
38.146	Hexyl tiglate	0.01
38.309	Unidentified	0.01
38.644	Unidentified	0.01
39.074	Unidentified	0.02
39.260	Dihydrocarvyl acetate	0.03
40.030	Neryl acetate	0.44
41.312	Geranyl acetate	0.80
41.673	beta-Bourbonene	0.01
41.841	Hexyl hexanoate	0.02
41.938	Sesquithujene isomer	0.02
42.890	Sesquithujene isomer	0.01
43.569	cis-alpha-Bergamotene	0.03
43.965	trans-beta-Caryophyllene	2.49
44.817	trans-alpha-Bergamotene	0.09
45.505	beta-Duprezianene	0.02
45.691	epi-beta-Santalene	0.01
46.063	(E)-beta-Farnesene	0.86
46.204	alpha-Humulene	0.07
46.345	Sesquisabinene	0.02
46.612	Unidentified	0.01
47.793	Germacrene D	0.14
47.981	trans-beta-Bergamotene	0.03
48.222	Unidentified	0.01
49.453	beta-Bisabolene	0.01
49.754	gamma-Cadinene	0.10
50.046	Unidentified	0.03
51.988	Unidentified	0.01
53.818	Caryophyllene oxide	0.23
57.268	tau-Cadinol	0.06
		100.00