

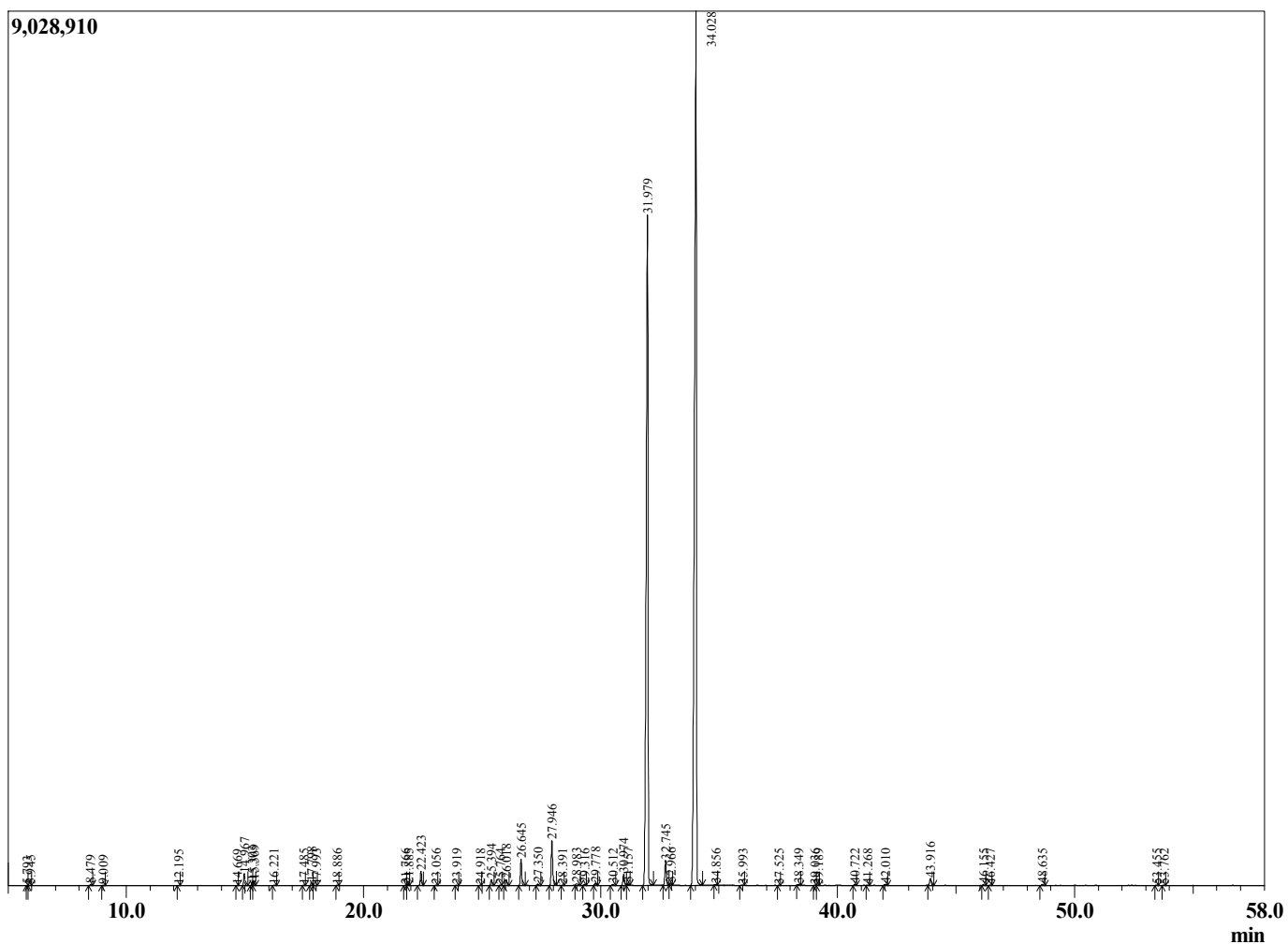
Sample Information

Sample Type : Essential Oil  
 Sample Name : Lemon Myrtle

Lemon Myrtle  
 Lot#AUR13-RW  
 Country: Australia



Chromatogram Backhousia citriodora



R.Time	Name	Area%
5.793	1-Methyl cyclohexa-1,4-diene	0.01
5.945	Methyl 2-methylbutyrate	0.02
8.479	Hex-3(Z)-enol	0.05
9.009	n-Hexanol	0.02
12.195	alpha-Pinene	0.01
14.669	beta-Pinene	0.01
14.967	6-Methyl hept-5-en-2-one	0.42
15.303	Myrcene	0.15
15.369	dehydro-1,8-Cineole	0.17
16.221	Hex-3(Z)-enyl acetate	0.03
17.485	Unidentified	0.03
17.798	Limonene	0.12
17.993	1,8-Cineole	0.02
18.886	trans-beta-Ocimene	0.02
21.766	para-Cymenene	0.02
21.885	Rosefuran	0.04
22.423	Linalool	0.60
23.056	Unidentified	0.02
23.919	trans-para-Mentha-2,8-dienol	0.03
24.918	Unidentified	0.02
25.394	exo-Isocitral	0.25
25.764	Unidentified	0.03
26.018	Citronellal	0.26
26.645	cis-Chrysanthenol	1.07
27.350	para-Mentha-1,5-dien-8-ol	0.07
27.946	trans-Isocitral	2.01
28.391	para-Cymen-8-ol	0.01
28.983	alpha-Terpineol	0.12
29.316	Unidentified	0.05
29.778	Unidentified	0.10
30.512	Unidentified	0.05
30.974	Nerol	0.52
31.157	Citronellol	0.07
31.979	Neral	36.58
32.745	Geraniol	1.11
32.966	Piperitone	0.07
34.028	Geranial	55.04
34.856	trans-Carvone oxide	0.04
35.993	Unidentified	0.03
37.525	Methyl geranate	0.01
38.349	Unidentified	0.04
39.036	Neric acid	0.01
39.189	alpha-Terpinyl acetate	0.02
40.722	Unidentified	0.06
41.268	Unidentified	0.02
42.010	beta-Elemene	0.07
43.916	beta-Caryophyllene	0.34
46.155	alpha-Humulene	0.04
46.427	Alloaromadendrene	0.03
48.635	Bicyclogermacrene	0.06
53.455	Spathulenol	0.02
53.762	Caryophyllene oxide	0.02
		100.00