

Client



**Appalachian Valley
Natural Products**
Anatolian Treasures

Source



Magnolia (Magnolia × alba)
CHP5-PY

Sample

Magnolia (Magnolia × alba)

Batch #:..... | **CHP5-PY**

Type:..... | **Essential Oil**

CAS Number:... | **8006-76-6**

Appalachian Valley Natural

Client



**Appalachian Valley
Natural Products**
Anatolian Treasures

Website

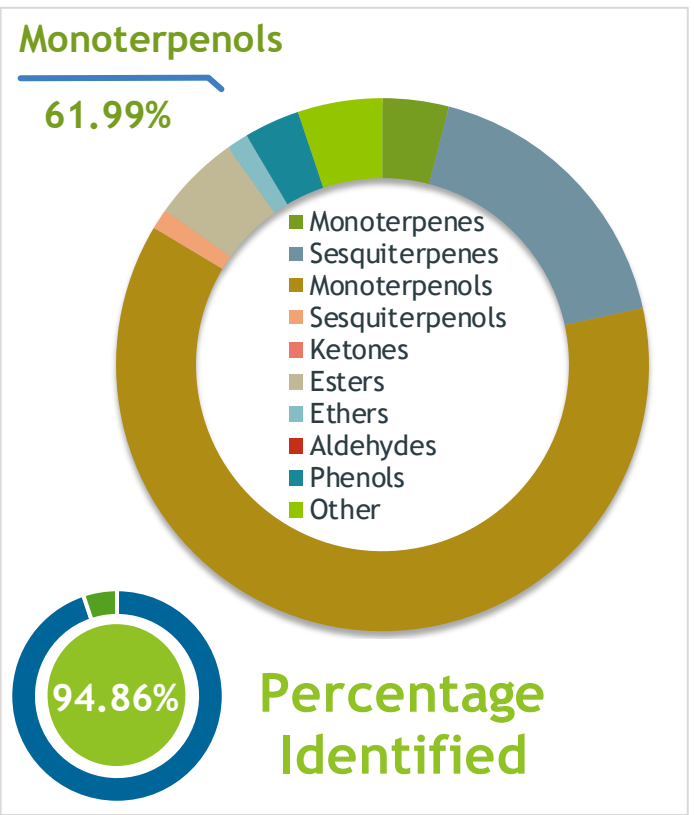


Primary

61.15% | **Linalool**

4.14% | **Methyl 2-methylbutyrate**

4.13% | **beta-Caryophyllene**



Result



Conclusion

No adulterants, diluents, or contaminants were detected via this method. This oil meets the expected profile for genuine essential oil of Magnolia (Magnolia × alba)

Internal Number: | EVS-2659



Essential Validation Services

747 SW 2nd Ave IMB 12 Suite 306
Gainesville, FL 32601

317.361.5044 | essentialvalidationservices.com

adam@essentialvalidationservices.com



Monoterpenes		4.01%
Sesquiterpenes		17.58%
Monoterpenols		61.99%
Sesquiterpenols		1.25%
Ketones		0.00%
Esters		5.34%
Ethers		1.31%
Aldehydes		0.00%
Phenols		3.38%
Other		5.14%

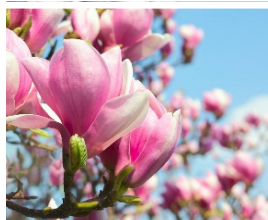
ESSENTIAL VALIDATION SERVICES | 747 SW 2ND AVE GAINESVILLE, FLORIDA 32601 | 317-361-5044

Client



Appalachian Valley
Natural Products
Anatolian Treasures

Source



Magnolia (Magnolia × alba)
CHP5-PY

Total Percentage		94.86%			
Number	RT	Area %	Compound Name	RI	Chemical Family
1	6.97	4.14%	Methyl 2-methylbutyrate	764.00	Aliphatic Ester
2	9.67	0.06%	2-Methyl butyric acid		
3	12.97	0.14%	alpha-Pinene	936.10	Monoterpene
4	13.60	0.06%	Camphene	950.30	Monoterpene
5	14.65	0.02%	Sabinene	973.00	Monoterpene
6	14.78	0.37%	beta-Pinene	974.00	Monoterpene
7	15.37	0.06%	Myrcene	989.20	Monoterpene
8	16.78	0.02%	para-Cymene	1024.30	Monoterpene
9	16.96	0.09%	Limonene	1029.50	Monoterpene
10	17.09	0.45%	1,8-Cineole	1031.80	Monoterpene Ether
11	17.32	1.32%	(Z)-beta-Ocimene	1037.80	Monoterpene
12	17.76	1.82%	(E)-beta-Ocimene	1047.70	Monoterpene
13	18.62	0.01%	cis-Linalool oxide	1075.10	Monoterpenol
14	19.45	0.20%	trans-Linalool oxide	1092.20	Monoterpenol
15	20.05	61.15%	Linalool	1099.00	Monoterpenol
16	20.47	0.22%	2-Phenylethanol	1116.30	Simple Phenolic
17	21.02	0.11%	allo-Ocimene	1129.90	Monoterpene
18	22.54	0.09%	Borneol	1168.71	Monoterpenol
19	22.95	0.06%	Terpinen-4-ol	1180.57	Monoterpenol
20	23.43	0.26%	alpha-Terpineol	1191.71	Monoterpenol
21	23.69	0.09%	Estragole	1193.40	Phenylpropanoid
22	24.73	0.05%	Nerol	1230.67	Monoterpenol
23	25.64	0.17%	Geraniol	1255.29	Monoterpenol
24	25.78	0.06%	2-Phenylethyl acetate	1257.00	Phenolic Ester
25	26.96	0.09%	Safrole	1290.14	Phenylpropanoid
26	28.69	0.04%	delta-Elemene	1335.83	Sesquiterpene
27	29.10	0.12%	alpha-Cubebene	1355.71	Sesquiterpene
28	30.03	0.43%	alpha-Copaene	1379.00	Sesquiterpene
29	30.29	0.16%	Elemene isomer		
30	30.53	4.08%	beta-Elemene	1389.20	Sesquiterpene
31	30.75	2.98%	Methyleugenol	1407.27	Phenylpropanoid
32	31.52	4.13%	beta-Caryophyllene	1427.14	Sesquiterpene
33	31.88	0.16%	trans-alpha-Bergamotene	1435.00	Sesquiterpene
34	32.59	1.46%	alpha-Humulene	1461.43	Sesquiterpene
35	32.83	0.01%	Selina-4,11-diene	1464.00	Sesquiterpene

ESSENTIAL VALIDATION SERVICES | 747 SW 2ND AVE GAINESVILLE, FLORIDA 32601 | 317-361-5044

Client



Source



Magnolia (Magnolia x alba)
CHP5-PY

Number	RT	Area %	Compound Name	RI	Chemical Family
36	33.22	0.48%	gamma-Gurjunene	1473.17	Sesquiterpene
37	33.43	1.21%	Germacrene D	1484.71	Sesquiterpene
38	33.63	2.21%	beta-Selinene	1487.57	Sesquiterpene
39	33.87	1.31%	alpha-Selinene	1492.50	Sesquiterpene
40	34.01	0.15%	(E,E)-alpha-Farnesene	1508.14	Sesquiterpene
41	34.11	0.39%	beta-Bisabolene	1509.86	Sesquiterpene
42	34.44	0.16%	gamma-Cadinene	1515.29	Sesquiterpene
43	34.65	1.24%	delta-Cadinene	1524.14	Sesquiterpene
44	34.95	0.14%	trans-Cadine-1,4-diene Isomer		
45	35.46	0.31%	Unidentified		
46	35.68	0.60%	(Z)-Nerolidol	1542.25	Sesquiterpenol
47	36.55	0.69%	Caryophyllene oxide	1594.86	Sesquiterpene Ether
48	37.30	0.17%	Humulene epoxide II	1606.43	Sesquiterpene Ether
49	37.39	0.11%	Phenyl ethyl hexanoate		
50	37.98	0.52%	Unidentified		
51	38.15	0.65%	T-Muurolol	1643.29	Sesquiterpenol
52	38.58	0.68%	Unidentified		
53	38.98	0.18%	Unidentified		
54	49.34	0.75%	Methyl linolenate	2089.00	Fatty Acid Ester
55	49.50	0.39%	Methyl linoleate	2096.25	Fatty Acid Ester

ESSENTIAL VALIDATION SERVICES | 747 SW 2ND AVE GAINESVILLE, FLORIDA 32601 | 317-361-5044