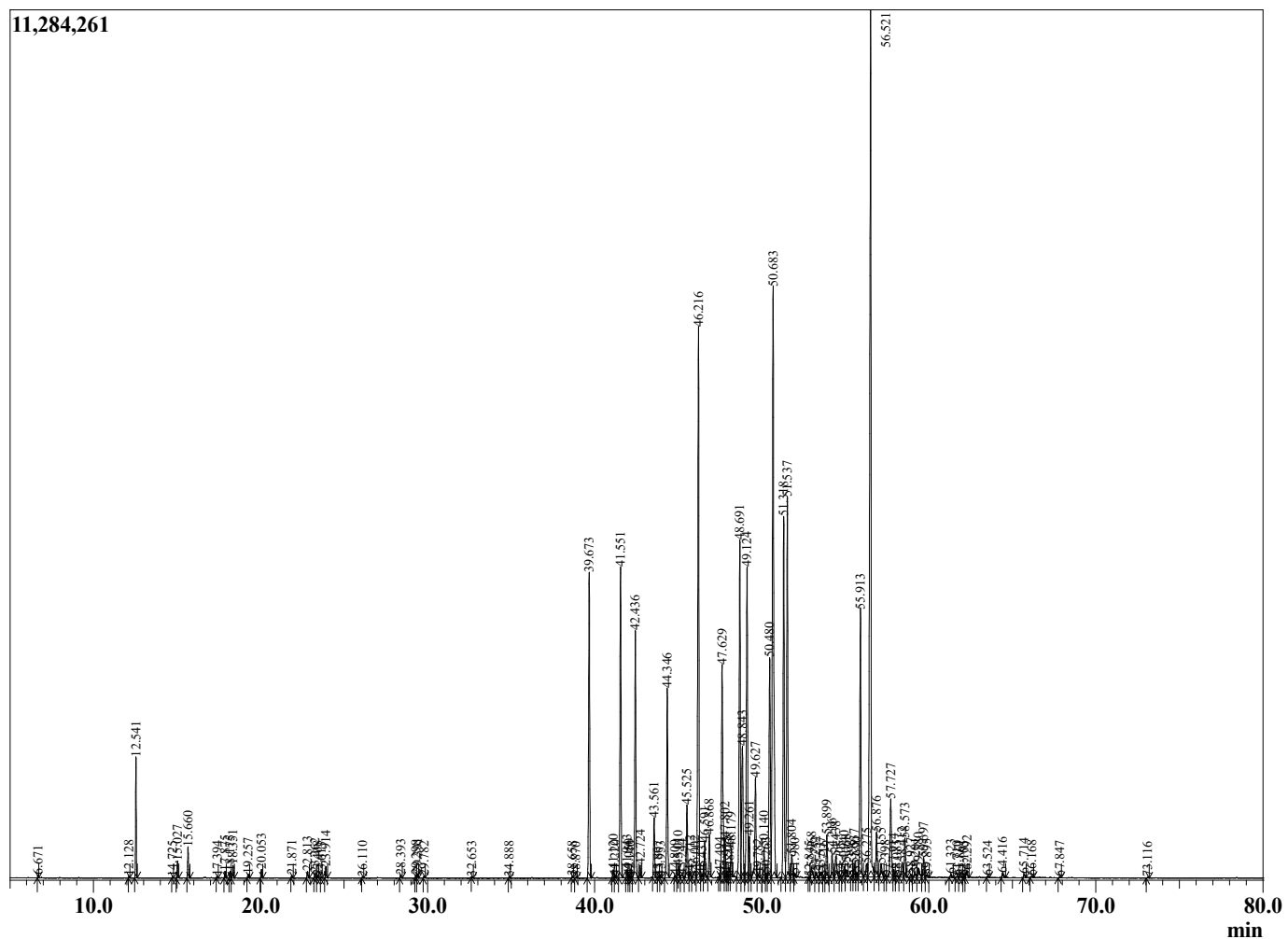


Sample Information

Sample Type : Essential Oil  
 Sample Name : *Leptospermum scorparium*  
 Injection Volume : 0.10

Manuka  
 Lot# NZF16-FK  
 Country: New Zealand

Chromatogram *Leptospermum scorparium*



R.Time	Name	Area%
6.671	Isopropyl ketone	0.02
12.128	alpha-Thujene	0.02
12.541	alpha-Pinene	1.10
14.725	Sabinene	0.01
15.027	beta-Pinene	0.17
15.660	Myrcene	0.32
17.394	alpha-Terpinene	0.02
17.875	para-Cymene	0.07
18.175	Limonene	0.07
18.351	1,8-cineole	0.14
19.257	trans-beta-Ocimene	0.04
20.053	gamma-Terpinene	0.09
21.871	Terpinolene	0.03
22.813	Linalool	0.07
23.262	Solusterol	0.05
23.408	2-Methylbutyl Isovalerate	0.02
23.613	Unidentified	0.01
23.914	3-Methyl-3-butenyl-3-methylbutyrate	0.13
26.110	3-Methyl-2-butenyl pentanoate	0.01
28.393	Terpinen-4-ol	0.04
29.298	2-Methyl Butyl tiglate	0.03
29.391	alpha-Terpineol	0.05
29.782	3-Methylbut-3-enyl (E)-2-methylbut-2-enoate	0.02
32.653	3-Methyl-2-butenyl Tiglate	0.01
34.888	Unidentified	0.01
38.658	delta-Elementene	0.02
38.870	Elementene isomer	0.01
39.673	alpha-Cubenene	4.08
41.120	alpha-Ylangene	0.12
41.220	Isoledene	0.03
41.551	alpha-Copaene	4.22
41.943	Elementene isomer	0.10
42.050	Unidentified	0.04
42.140	Unidentified	0.01
42.436	beta-Elementene	3.37
42.724	Benzyl isovalerate	0.16
43.561	alpha-Gurjunene	0.80
43.807	beta-Maaliene	0.01
43.953	Unidentified	0.01
44.346	beta-Caryophyllene	2.57
44.809	gamma-Maaliene	0.03
45.010	Calarene	0.19
45.244	Maaliene isomer	0.07
45.525	Aromadendrene	1.04
45.712	6,9-Guaiadiene	0.10
46.002	Dihydrocurcumene	0.16
46.216	Cadina-3,5-diene	7.99
46.431	Valerena-4,7(11)-diene	0.04
46.591	alpha-Humulene	0.45
46.868	Alloaromadendrene	0.57
47.494	4,5-di-epi-aristolochene	0.05
47.629	Cadina-1(6),4-diene	3.74
47.802	gamma-Murolene	0.52
47.925	Gurjunene isomer	0.05
48.068	alpha-Amorphene	0.12
48.179	Germacrene D	0.40

R.Time	Name	Area%
48.691	beta-Selinene	5.02
48.843	gamma-Amorphene	2.25
49.124	alpha-Selinene	4.84
49.261	alpha-Murolene	0.56
49.627	trans,trans-alpha-Farnesene	1.51
49.782	beta-Selinene	0.04
50.140	gamma-Cadinene	0.41
50.263	Cubebol	0.05
50.480	delta-Cadinene	3.61
50.683	trans-Calamenene	10.84
51.318	trans-Cadina-1,4-diene	5.14
51.537	Flavesone	5.40
51.804	alpha-Calacorene	0.34
51.980	Unidentified	0.05
52.845	Germacrene B	0.01
52.968	trans-Nerolidol	0.23
53.252	Unidentified Triketone	0.10
53.537	Palustrol	0.11
53.716	Unidentified	0.01
53.899	Spathulenol	0.59
54.216	Caryophyllene oxide	0.36
54.438	Globulol	0.43
54.705	Unidentified	0.02
54.940	Viridiflorol	0.18
55.068	Cubeban-11-ol	0.12
55.396	Unidentified	0.01
55.537	Ledol	0.18
55.690	Ionone isomer	0.08
55.913	Isoleptospermone	3.93
56.275	Intermedeol	0.24
56.521	Leptospermone	14.85
56.876	Epicubenol	0.75
57.155	Unidentified	0.25
57.398	Unidentified	0.02
57.727	Cubenol isomer	1.43
57.914	Muurolol isomer	0.11
58.085	Unidentified	0.03
58.412	Cadin-4-en-10-ol	0.29
58.573	Intermedeol	0.57
58.927	Cubenol isomer	0.05
59.201	Unidentified	0.10
59.380	Cadalene	0.21
59.697	beta-Copaen-4-alfa-ol	0.29
59.895	14-Hydroxy-9-epi-Z-Caryophyllene	0.05
61.323	Unidentified	0.04
61.710	Unidentified	0.03
61.861	Unidentified	0.04
62.105	Unidentified	0.02
62.292	Unidentified	0.14
63.524	Nootkatol	0.02
64.416	Unidentified	0.07
65.714	Unidentified	0.06
66.168	Unidentified	0.03
67.847	Unidentified	0.02
73.116	Unidentified	0.01
83.691	Grandiflorone	0.20
		100.00