

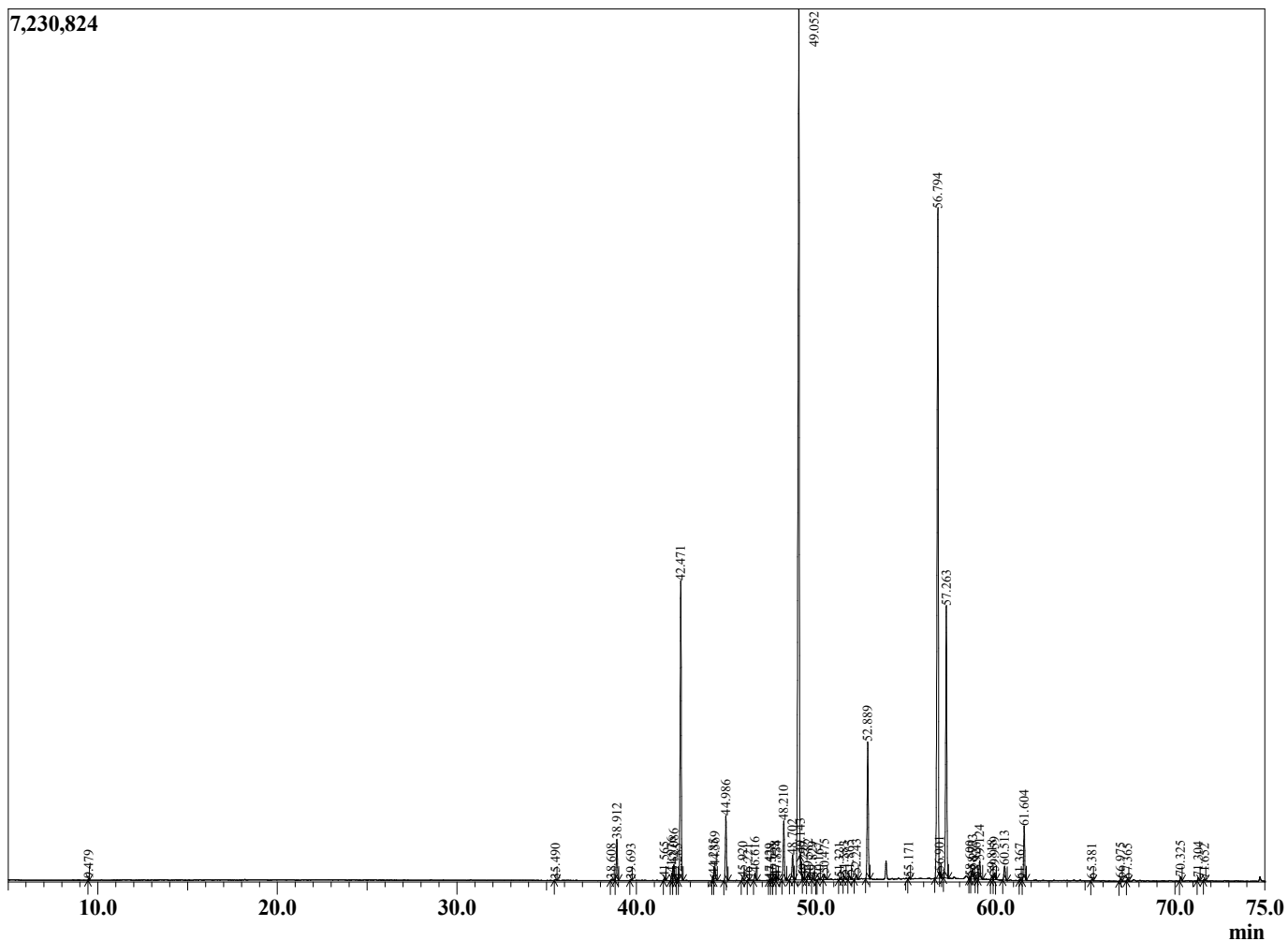
Sample Information

Sample Type : Essential Oil
 Sample Name : Commiphora myrrha :
 Injection Volume : 0.10

Myrrh
 Lot# ETX21-XH
 Country: Ethiopia



Chromatogram Commiphora myrrha



R.Time	Name	Area%
9.479	1,3-Dimethyl Benzene	0.02
35.490	Bornyl acetate	0.03
38.608	Unidentified	0.07
38.912	delta-Elemene	1.33
39.693	alpha-Cubebene	0.03
41.565	alpha-Copaene	0.08
41.976	Elemene isomer	0.25
42.086	beta-Bourbonene	0.54
42.285	alpha-Bourbonene	0.04
42.471	beta-Elemene	10.23
44.285	beta-Cubebene	0.15
44.369	beta-Caryophyllene	0.51
44.986	gamma-Elemene	2.22
45.920	Isogermacrene D	0.10
46.221	Unidentified	0.02
46.616	alpha-Humulene	0.26
47.429	Unidentified	0.04
47.528	Unidentified	0.03
47.728	Selina-4,11-diene	0.15
47.834	trans-Cadina-1(6),4-diene	0.14
48.210	Germacrene D	2.01
48.702	beta-Selinene	0.94
49.052	Curzerene	34.95
49.143	alpha-Selinene	0.12
49.299	alpha-Murolene	0.06
49.582	Unidentified	0.20
49.829	beta-Selinene	0.08
50.167	gamma-Cadinene	0.06
50.475	delta-Cadinene	0.20
51.321	alpha-Gurjunene	0.05
51.583	Selina-4(15),7(11)-diene	0.10
51.865	Selina-3,7(11)-diene	0.14
52.243	Hedycaryol	0.17
52.889	Germacrene B	4.72
55.171	Unidentified	0.04
56.794	Furanouedesma-1,3-diene	25.94
56.901	(-)-Spathulenol	0.03
57.263	Lindestrene	9.41
58.600	Selin-11-en-4-alpha-ol	0.07
58.733	Furanodiene	0.48
58.926	Germacrene	0.03
59.124	Intermedeol	0.68
59.818	Unidentified	0.16
59.959	2-Methoxyfuranodiene isomer	0.25
60.513	Germacrene	0.56
61.367	Unidentified	0.02
61.604	2-Methoxyfuranodiene B	1.83
65.381	Unidentified	0.05
66.975	Unidentified	0.09
67.365	Unidentified	0.06
70.325	2-acetoxifyuranodiene	0.14
71.304	Unidentified	0.10
71.652	Unidentified	0.03
		100.00