

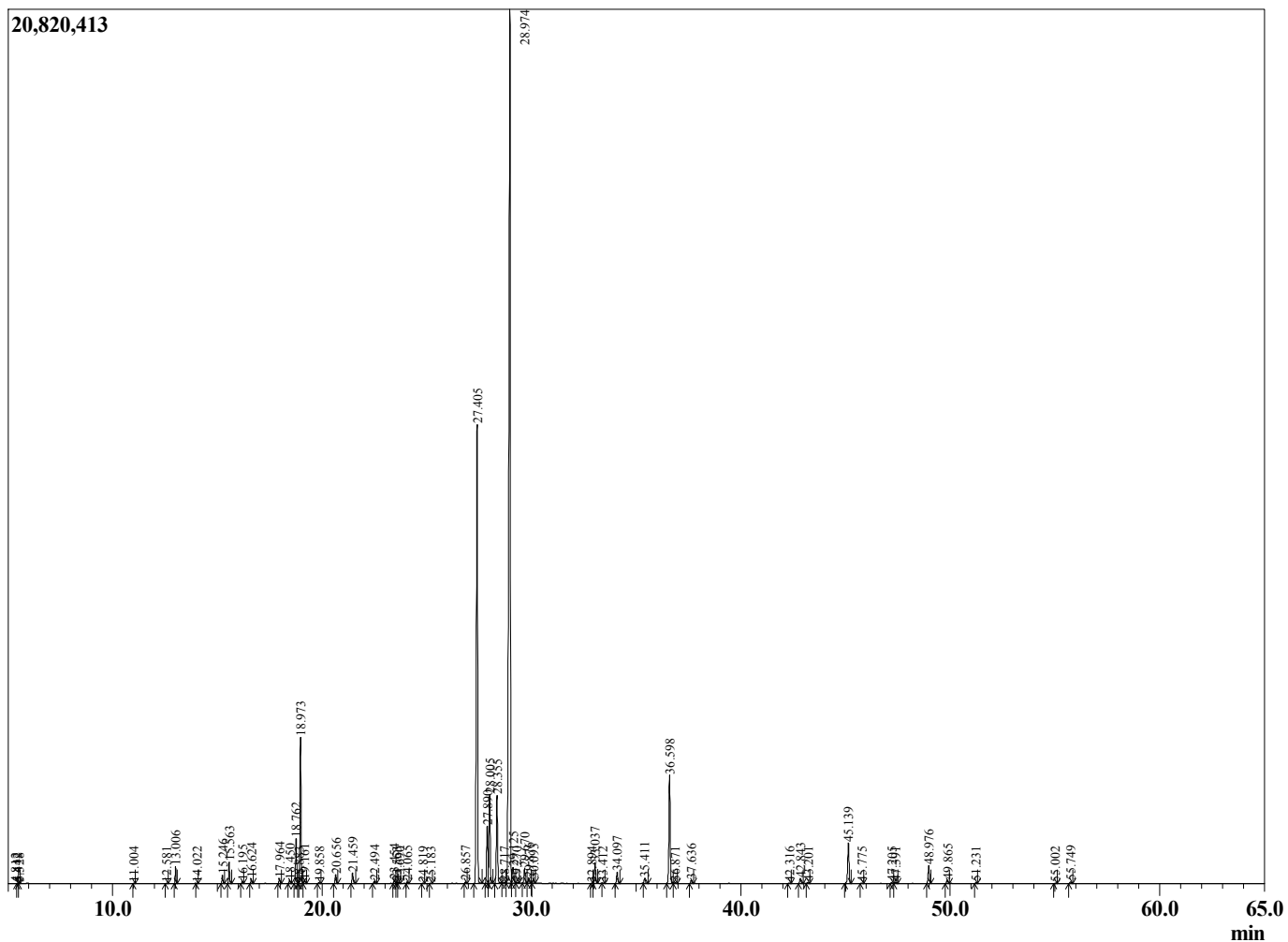
Sample Information

Sample Type : Essential Oil
 Sample Name : Mentha piperita
 Injection Volume : 0.10

Peppermint USA
 LOT# USK36-KT
 Country: USA



Chromatogram Mentha piperita



R.Time	Name	Area%
4.223	3-Methylbutanal	0.03
4.336	2-Methylbutanal	0.02
4.812	2-Ethylfuran	0.01
5.442	1-Pentanol	0.01
5.528	2-Methyl butanol	0.01
11.004	2,5-Diethyltetrahydrofuran	0.02
12.581	alpha-Thujene	0.03
13.006	alpha-Pinene	0.51
14.022	3-Methylcyclohexanone	0.02
15.246	Sabinene	0.29
15.563	beta-Pinene	0.74
16.195	Myrcene	0.08
16.624	3-Octanol	0.16
17.964	alpha-Terpinene	0.18
18.450	para-Cymene	0.14
18.762	Limonene	1.66
18.883	beta-Phellandrene	0.04
18.973	1,8-cineole	5.49
19.161	cis-beta-Ocimene	0.14
19.858	trans-beta-Ocimene	0.05
20.656	gamma-Terpinene	0.36
21.459	trans-Sabinene hydrate	0.43
22.494	Terpinolene	0.08
23.454	Linalool	0.15
23.553	cis-Sabinene hydrate	0.04
23.690	2-Methylbutyl-2-methylbutyrate	0.04
24.065	2-Methylbutyl isovalerate	0.07
24.819	3-Octyl acetate	0.02
25.183	cis-para-Menth-2-en-1-ol	0.03
26.857	Neoisopulegol	0.06
27.405	Menthone	20.39
27.890	Menthofuran	2.41
28.005	Isomenthone	3.60
28.355	Neomenthol	3.77
28.717	trans-Isopulegone	0.05
28.974	Menthyl	46.96
29.125	Terpinen-4-ol	0.75
29.270	Unidentified	0.04
29.670	Isomenthol	0.58
29.876	Neoisomenthol	0.19
30.093	alpha-Terpineol	0.16
32.894	Hex-(3Z)-enyl isovalerate	0.02
33.037	Pulegone	0.87
33.412	Carvone	0.02
34.097	Piperitone	0.48
35.411	Neomenthyl acetate	0.25
36.598	Menthyl acetate	4.87
36.871	Dihydroedulan I	0.04
37.636	Isomenthyl acetate	0.16
42.316	alpha-Copaene	0.04
42.843	beta-Bourbonene	0.22
43.201	beta-Elementene	0.05
45.139	beta-Caryophyllene	1.93
45.775	beta-Copaene	0.03
47.205	trans-beta-Farnesene	0.05
47.391	alpha-Humulene	0.05

R.Time	Name	Area%
48.976	Germacrene D	0.80
49.865	Bicyclgermacrene	0.16
51.231	delta-Cadinene	0.04
55.002	Caryophyllene oxide	0.02
55.749	Viridiflorol	0.08
		100.00