

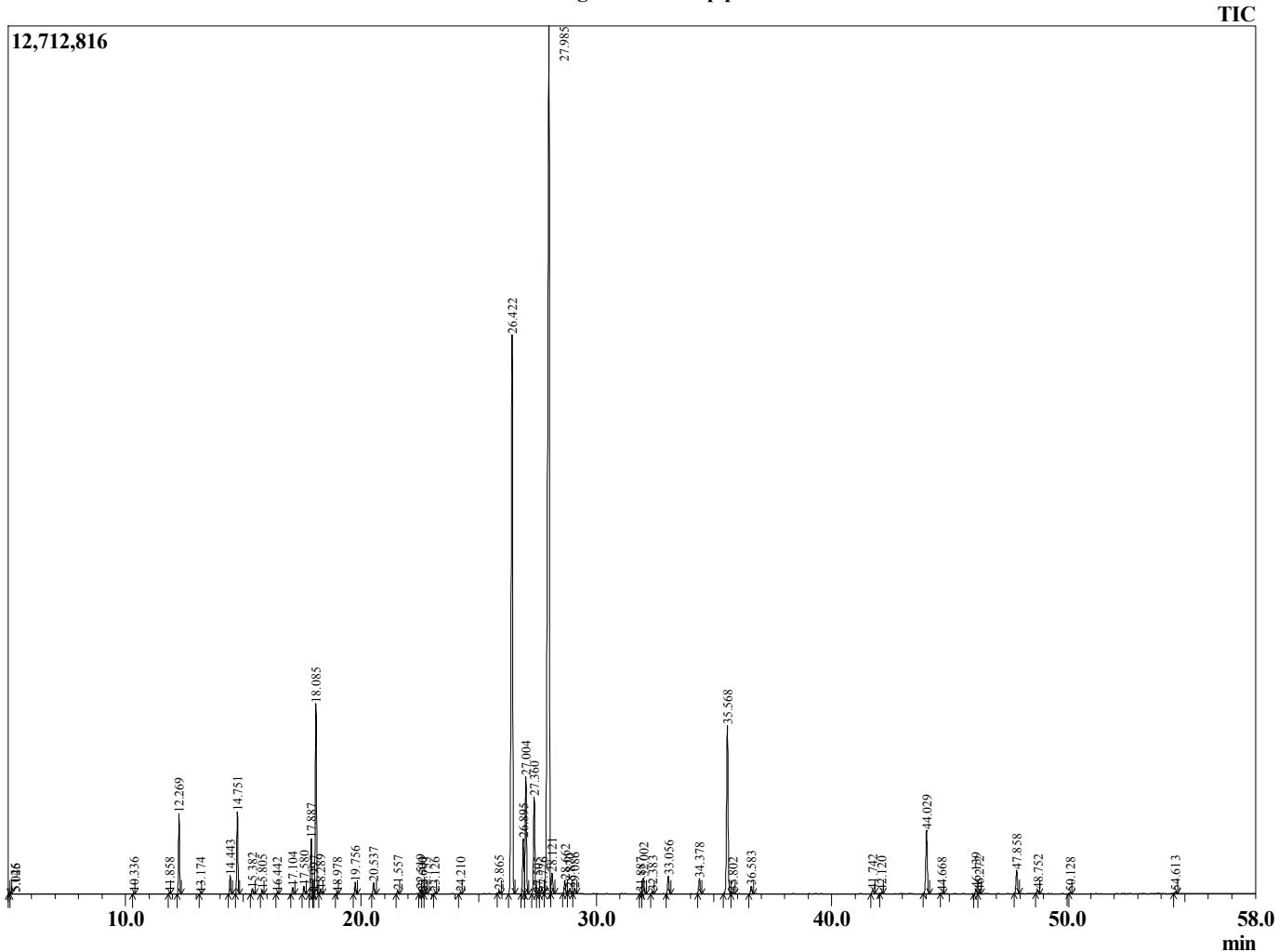
Sample Information

Analyzed : 11/14/2018 11:28:15 AM
 Sample Type : Essential Oil
 Sample Name : Mentha piperita
 Injection Volume : 0.10

Peppermint USA
 Lot# USF33-FW
 Country: USA



Chromatogram Mentha piperita



R.Time	Name	Area%
3.905	Valeraldehyde	0.02
4.010	2-Methylbutanal	0.01
5.045	1-Pentanol	0.02
5.126	2-Methyl butanol	0.01
10.336	2,5-Diethyltetrahydrofuran	0.02
11.858	alpha-Thujene	0.04
12.269	alpha-Pinene	2.04
13.174	Camphene	0.02
14.443	Sabinene	0.52
14.751	beta-Pinene	2.34
15.382	Myrcene	0.16
15.805	3-Octanol	0.12
16.442	alpha-Phellandrene	0.04
17.104	alpha-Terpinene	0.19
17.580	para-Cymene	0.22
17.887	Limonene	1.69
17.997	beta-Phellandrene	0.04
18.085	1,8-Cineole	5.76
18.289	cis-beta-Ocimene	0.13
18.978	trans-beta-Ocimene	0.03
19.756	gamma-Terpinene	0.36
20.537	trans-Sabinene hydrate	0.35
21.557	Terpinolene	0.10
22.519	Linalool	0.14
22.600	cis-Sabinene hydrate	0.03
22.753	2-Methylbutyl-2-methylbutyrate	0.04
23.126	2-Methylbutyl isovalerate	0.03
24.210	cis-para-Menth-2-en-1-ol	0.03
25.865	Isopulegol	0.08
26.422	Menthone	21.46
26.895	Menthofuran	1.87
27.004	Isomenthone	3.98
27.360	Neomenthol	3.35
27.505	Borneol	0.02
27.726	trans-Isopulegone	0.07
27.985	Menthol	40.45
28.121	Terpinen-4-ol	0.76
28.662	Isomenthol	0.44
28.870	Neoisomenthol	0.17
29.086	alpha-Terpineol	0.17
31.887	3-Hexenyl isovalerate	0.03
32.002	Pulegone	0.58
32.383	Carvone	0.08
33.056	Piperitone	0.61
34.378	Neomenthyl acetate	0.56
35.568	Menthyl acetate	6.41
35.802	Dihydroedulan	0.04
36.583	Isomenthyl acetate	0.27
41.742	beta-Bourbonene	0.13
42.120	beta-Elementene	0.05
44.029	beta-Caryophyllene	2.45
44.668	beta-Copaene	0.02
46.139	trans-beta-Farnesene	0.20
46.272	alpha-Humulene	0.06
47.858	Germacrene D	0.92
48.752	Bicyclgermacrene	0.14

R.Time	Name	Area%
50.128	delta-Cadinene	0.04
54.613	Viridiflorol	0.09
		100.00