

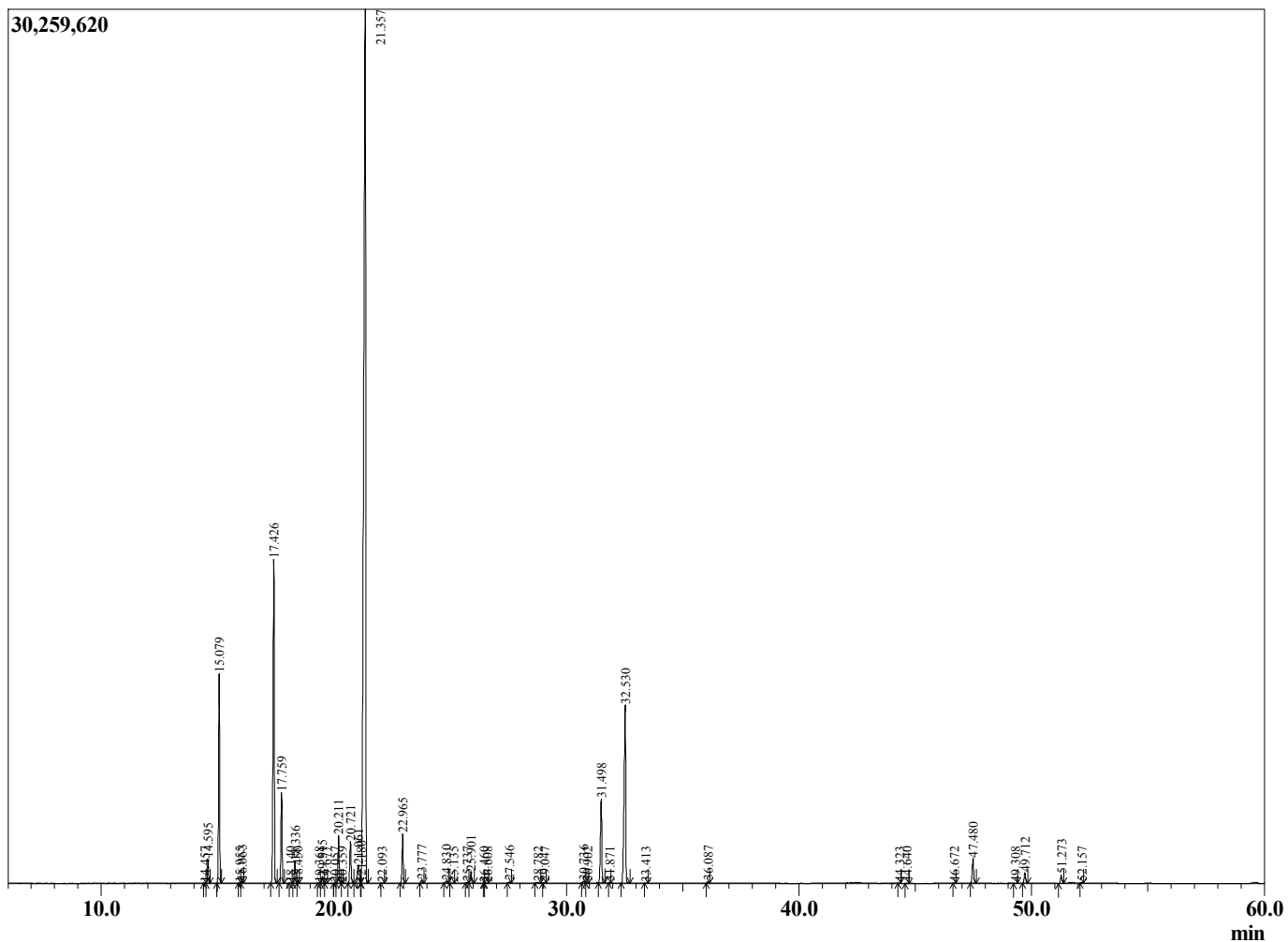
Sample Information

Sample Type : Essential Oil
 Sample Name : Cinnamomum camphora

Ravintsara
 Lot# MAH3-HT
 Country: Madagascar



Chromatogram Cinnamomum camphora



R.Time	Name	Area%
14.457	Tricyclene	0.01
14.595	alpha-Thujene	0.80
15.079	alpha-Pinene	7.07
15.955	alpha-Fenchene	0.01
16.063	Camphene	0.07
17.426	Sabinene	12.35
17.759	beta-Pinene	3.10
18.140	3-para-Menthene	0.01
18.336	Myrcene	0.74
18.450	Dehydro-1,8-Cineole	0.02
19.368	Pseudolimonene	0.02
19.515	alpha-Phellandrene	0.25
19.677	alpha-Pinene	0.01
20.057	1,4-Cineole	0.01
20.211	alpha-Terpinene	1.79
20.359	ortho-Cymene	0.00
20.721	para-Cymene	1.76
21.061	Limonene	1.07
21.180	beta-Phellandrene	0.07
21.357	1,8-cineole	53.43
22.093	trans-beta-Ocimene	0.02
22.965	gamma-Terpinene	1.86
23.777	trans-Sabinene hydrate	0.11
24.830	Terpinolene	0.09
25.135	para-Cymenene	0.01
25.737	Linalool	0.03
25.901	cis-Sabinene hydrate	0.47
26.460	Unidentified	0.00
26.608	Phenethyl alcohol	0.01
27.546	cis-para-Menth-2-en-1-ol	0.04
28.782	trans-para-Menth-2-en-1-ol	0.03
29.047	Unidentified	0.01
30.736	delta-Terpineol	0.07
30.902	Borneol	0.02
31.498	Terpinen-4-ol	3.59
31.871	para-Cymen-8-ol	0.02
32.530	alpha-Terpineol	8.90
33.413	trans-Piperitol	0.01
36.087	Linalyl acetate	0.06
44.323	Isoledene	0.01
44.640	alpha-Copaene	0.02
46.672	alpha-Gurjunene	0.01
47.480	beta-Caryophyllene	1.14
49.308	Humulen-(v1)	0.02
49.712	alpha-Humulene	0.50
51.273	Germacrene D	0.35
52.157	Bicyclogermacrene	0.03
		100.00