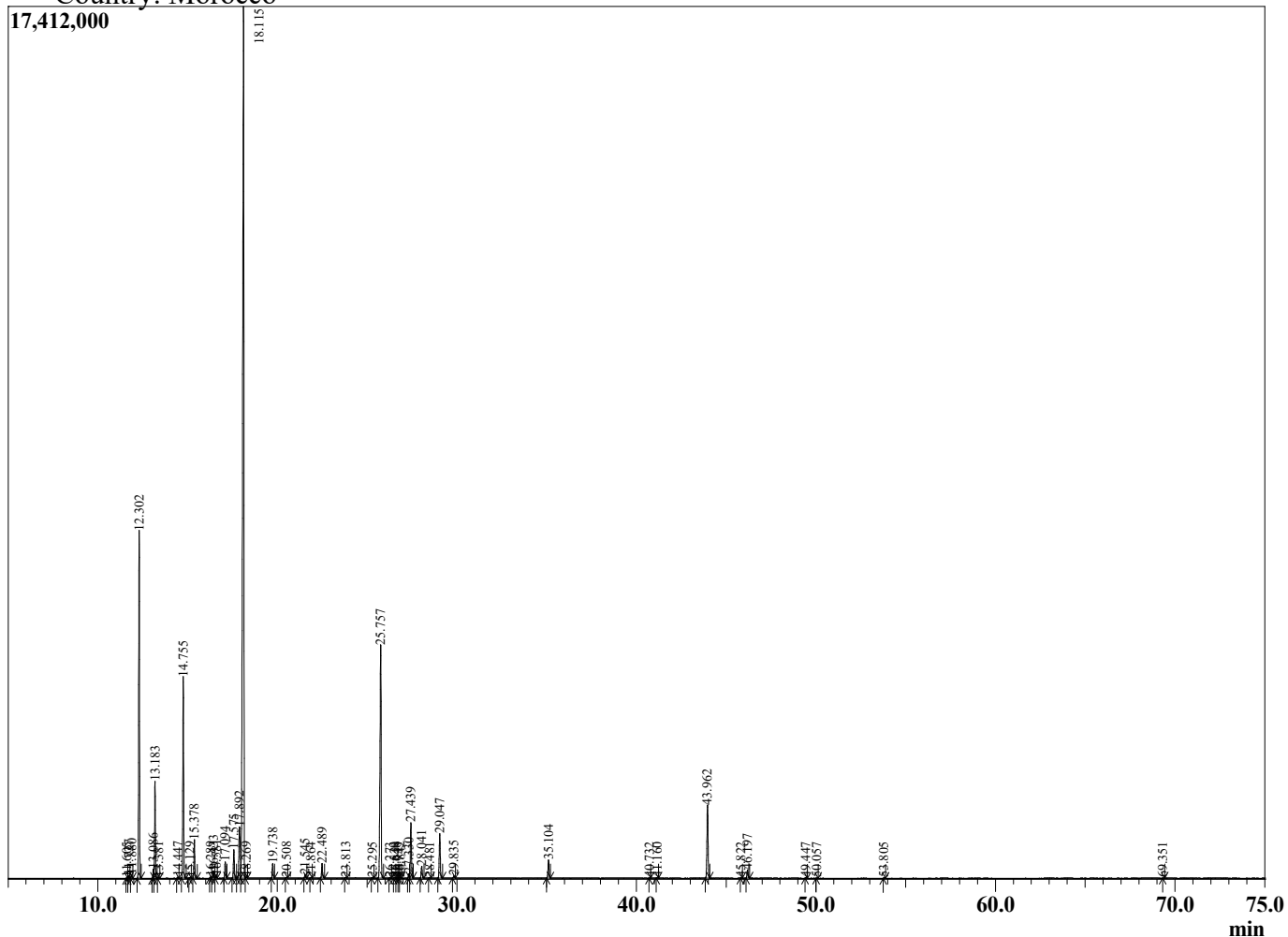


Sample Information

Sample Type : Essential Oil
 Sample Name : ROSOFF2
 Injection Volume : 0.10 µL

Rosemary Cineole
 Lot# MOZ38-ZK
 Country: Morocco



R.Time	Name	Area%
4.371	Unidentified	0.01
11.605	Hashishene	0.01
11.727	Tricyclene	0.08
11.880	alpha-Thujene	0.12
12.302	alpha-Pinene	12.18
13.086	alpha-Fenchene	0.30
13.183	Camphene	3.29
13.381	Thuja-2,4(10)diene	0.03
14.447	Sabinene	0.04
14.755	beta-Pinene	7.19
15.129	3-Octanone	0.02
15.378	Myrcene	1.33
16.289	Pseudolimonene	0.05
16.433	alpha-Phellandrene	0.28
16.581	delta-3-Carene	0.09
17.094	alpha-Terpinene	0.62
17.575	para-Cymene	1.15
17.892	Limonene	2.85
18.115	1,8-Cineole	47.33
18.269	cis-beta-Ocimene	0.04
19.738	gamma-Terpinene	0.58
20.508	trans-Sabinene hydrate	0.03
21.545	Terpinolene	0.15
21.864	para-Cymenene	0.02
22.489	Linalool	0.61
23.813	endo-Fenchol	0.02
25.295	trans-Pinocarveol	0.02
25.757	Camphor	11.37
26.273	trans-beta-Terpineol	0.01
26.529	Unidentified	0.02
26.640	Unidentified	0.01
26.775	Unidentified	0.02
26.842	Unidentified	0.03
27.330	delta-Terpineol	0.17
27.439	Borneol	2.43
28.041	Terpinen-4-ol	0.51
28.481	Unidentified	0.01
29.047	alpha-Terpineol	1.96
29.835	Verbenone	0.10
35.104	Bornyl acetate	0.83
40.732	Unidentified	0.01
41.160	Unidentified	0.02
43.962	beta-Caryophyllene	3.61
45.822	Unidentified	0.01
46.197	alpha-Humulene	0.39
49.447	beta-Bisabolene	0.03
50.057	Unidentified	0.01
53.805	Unidentified	0.02
69.351	Unidentified	0.01
		100.00

This report is provided as a courtesy to our customers for their evaluation only. Any publishing, copying, use, dissemination, or distribution of this report, including online, without the express written permission of Appalachian Valley Natural Products is strictly prohibited.