

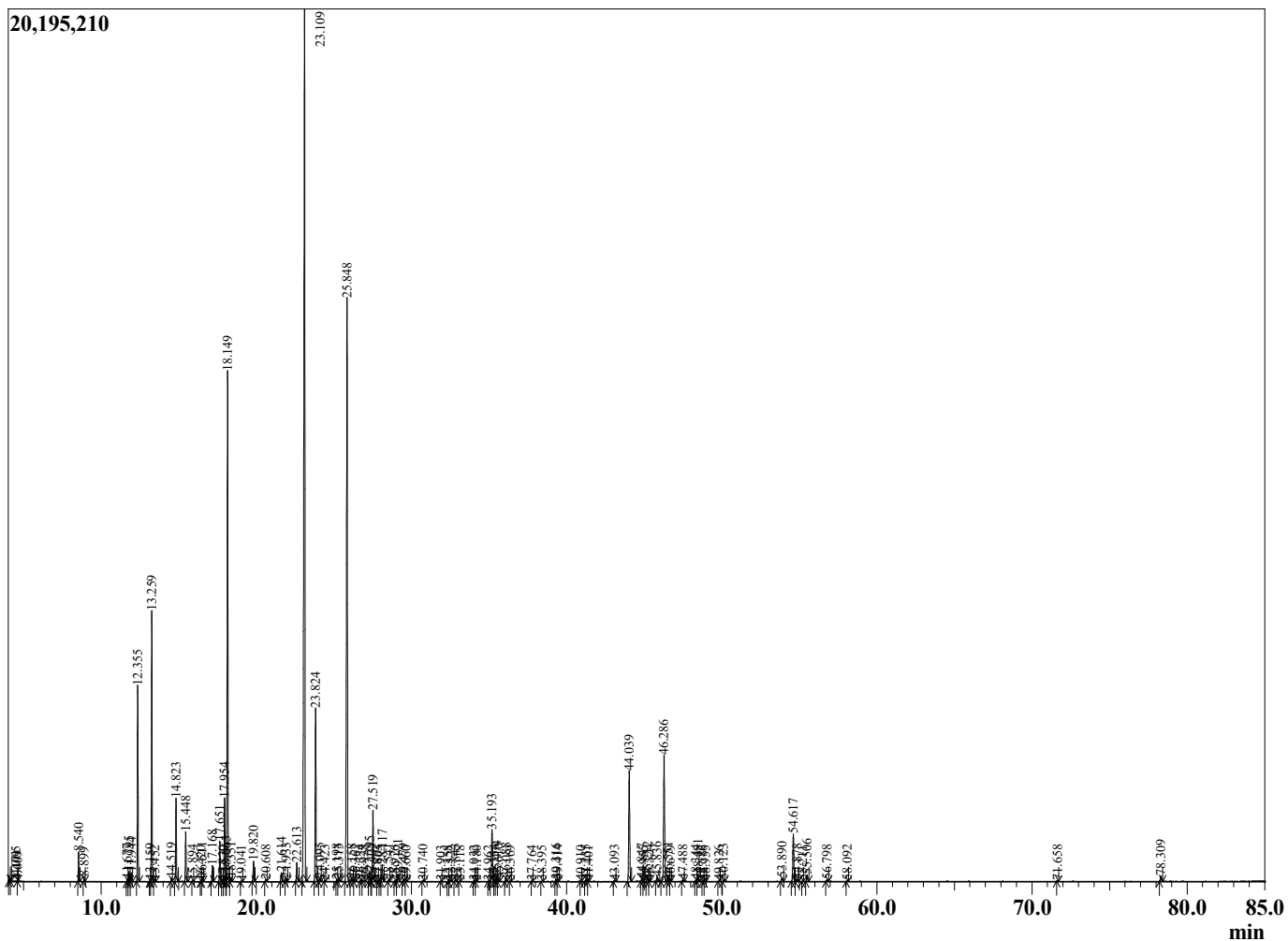
Sample Information

Sample Type : Essential Oil
 Sample Name : Salvia officinalis
 Injection Volume : 0.10

Sage Dalmation
 Lot# GRD13-DE
 Country: Greece



Chromatogram Salvia officinalis



R.Time	Name	Area%
4.065	3-Methylbutanal	0.06
4.171	2-Methylbutanal	0.02
4.609	2-Ethylfuran	0.01
8.540	cis-Salvene	0.49
8.899	trans-Salvene	0.08
11.677	Hashishene	0.05
11.795	Tricyclene	0.21
11.944	alpha-Thujene	0.18
12.355	alpha-Pinene	4.02
13.159	alpha-Fenchene	0.04
13.259	Camphene	5.61
13.452	Thuja-2,4(10)-diene	0.02
14.519	Sabinene	0.08
14.823	beta-Pinene	2.03
15.448	Myrcene	1.14
15.894	3-Octanol	0.02
16.420	Unidentified	0.01
16.511	alpha-Phellandrene	0.10
17.168	alpha-Terpinene	0.39
17.651	para-Cymene	0.97
17.830	Unidentified	0.02
17.954	Limonene	2.14
18.065	beta-Phellandrene	0.10
18.149	1,8-Cineole	12.72
18.351	(Z)-beta-Ocimene	0.10
19.041	(E)-beta-Ocimene	0.02
19.820	gamma-Terpinene	0.52
20.608	trans-Sabinene hydrate	0.05
21.614	Terpinolene	0.24
21.933	para-Cymenene	0.08
22.613	Linalool	0.55
23.109	alpha-Thujone	29.14
23.824	beta-Thujone	4.63
24.095	Unidentified	0.08
24.423	alpha-Campholenal	0.02
25.198	Isothujol	0.05
25.313	trans-Sabinol	0.09
25.848	Camphor	17.60
26.158	Neothujol	0.07
26.362	trans-beta-Terpineol	0.03
26.724	trans-Pinocamphone	0.05
26.928	Isoborneol	0.04
27.295	Thujanol analogue	0.27
27.404	delta-Terpineol	0.05
27.519	Borneol	1.98
27.803	Isopinocampone	0.01
27.975	Unidentified	0.02
28.117	Terpinen-4-ol	0.47
28.541	para-Cymen-8-ol	0.05
28.926	Unidentified	0.01
29.121	alpha-Terpineol	0.24
29.479	Unidentified	0.05
29.660	Unidentified	0.01
30.740	trans-Carveol	0.02
31.903	(Z)-3-Hexenyl isovalerate	0.01
32.358	Unidentified	0.01

R.Time	Name	Area%
32.522	(E)-2-Hexenyl isovalerate	0.02
32.843	Linalyl acetate	0.06
33.118	Unidentified	0.01
34.032	Unidentified	0.02
34.180	Unidentified	0.02
34.962	Unidentified	0.01
35.193	Bornyl acetate	1.53
35.354	Isobornyl acetate	0.03
35.474	trans-Sabinyl acetate	0.15
35.610	Thujyl acetate	0.08
36.088	Carvacrol	0.09
36.369	Unidentified	0.02
37.764	Myrtenyl acetate	0.01
38.395	Unidentified	0.01
39.316	alpha-Terpinyl acetate	0.06
39.414	Unidentified	0.03
40.910	Isodene	0.01
41.235	alpha-Copaene	0.05
41.401	Geranyl acetate	0.01
43.093	cis-beta-Caryophyllene	0.04
44.039	trans-beta-Caryophyllene	3.53
44.847	Unidentified	0.08
44.955	Unidentified	0.01
45.212	Aromadendrene	0.13
45.324	Unidentified	0.03
45.836	Unidentified	0.15
46.286	alpha-Humulene	3.97
46.551	Alloaromodendrene	0.14
46.679	Unidentified	0.02
47.488	trans-Cadina-1(6),4-diene	0.05
48.344	Unidentified	0.05
48.481	Viridiflorene	0.22
48.786	alpha-Selinene	0.02
48.955	alpha-Murolene	0.01
49.826	gamma-Cadinene	0.02
50.123	delta-Cadinene	0.05
53.890	Caryophyllene oxide	0.12
54.617	Viridiflorol	1.51
54.878	Unidentified	0.07
55.211	Unidentified	0.01
55.506	Humulene epoxide II	0.20
56.798	Unidentified	0.06
58.092	Unidentified	0.02
71.658	Isopimara-9(11),15-diene	0.02
78.309	Manool	0.17
		100.00