

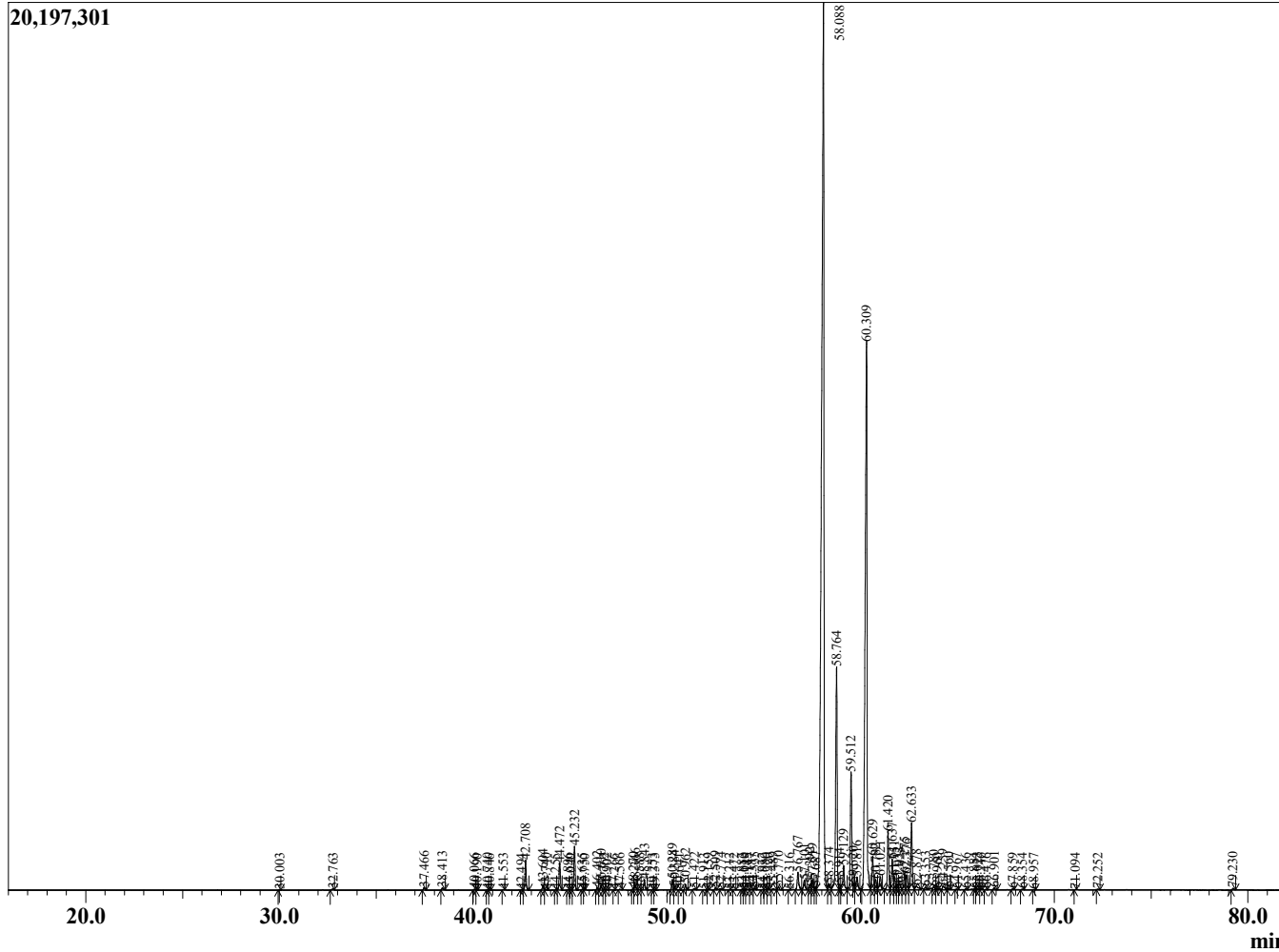
Sample Information

Sample Type : Essential Oil
 Sample Name : Santalum album
 Injection Volume : 0.10

Sandalwood
 Lot# IDW38-WH
 Country: India



Chromatogram Santalum album



R.Time	Name	Peak Report TIC	Area%
9.086	Santene		0.02
30.003	Unidentified		0.01
32.763	Teresantalic acid		0.04
37.466	alpha-Santalal		0.07
38.413	Eugenol		0.07
40.066	Unidentified		0.02
40.190	Unidentified		0.01
40.740	7-epi-Sesquithujene		0.01
40.846	beta-Elemene		0.01
41.553	nortricyclo-eka-Santallic acid		0.02
42.494	alpha-Cedrene		0.01
42.708	alpha-Santalene		0.84
43.604	cis-alpha-Bergamotene		0.14
43.740	Unidentified		0.02
44.255	Unidentified		0.00
44.472	epi-beta-Santalene		0.79
44.896	Sesquisabinene		0.01
45.040	Unidentified		0.01
45.232	beta-Santalene		1.23
45.635	Unidentified		0.02
45.750	Unidentified		0.01
46.402	gamma-Curcumene		0.06
46.610	Ar-Cucumene		0.13
46.762	cis-trans-alpha-Farnesene		0.02
46.902	beta-Vetispirine		0.02
47.266	Unidentified		0.01
47.566	tricyclo-eka-Santallic acid		0.02
48.270	beta-Bisabolene		0.05
48.366	beta-Curcumene		0.17
48.588	Unidentified		0.01
48.843	alpha-Teresantalic acid		0.29
49.253	Unidentified		0.01
49.373	Unidentified		0.01
50.289	Ionone isomer		0.32
50.384	cis-Sesquisabinene hydrate		0.09
50.641	alpha-Elemol		0.01
50.962	Ionone isomer		0.17
51.422	trans-Nerolidol		0.06
51.913	Dendrolasin		0.02
52.159	Teresantalic acid analog		0.02
52.509	trans-Sesquisabinene hydrate		0.06
52.774	Unidentified		0.03
53.212	Unidentified		0.01
53.472	Unidentified		0.01
53.883	Unidentified		0.02
54.010	Unidentified		0.02
54.145	Unidentified		0.02
54.387	Unidentified		0.03
54.535	Unidentified		0.05
54.932	Unidentified		0.02
55.080	Unidentified		0.02
55.220	Unidentified		0.04
55.489	alpha-Acorenol		0.06
55.770	Acorenol analog		0.10
56.316	Unidentified		0.01
56.767	Khusilal		0.64

R.Time	Name	Area%
57.101	trans-alpha-Santalal	0.37
57.392	cis-alpha-Santalal	0.18
57.519	Unidentified	0.33
57.687	Unidentified	0.09
58.088	cis-alpha-Santalol	47.02
58.374	trans-Nuciferal	0.26
58.764	cis-alpha-trans-Bergamotol	7.31
58.914	Unidentified	0.18
59.129	trans-alpha-Santalol	0.91
59.512	cis-beta-epi-Santalol	3.82
59.620	Unidentified	0.01
59.816	cis-alpha-trans-Bergamotol	0.56
60.309	cis-beta-Santalol	23.11
60.629	cis-Nuciferol	1.08
60.782	trans-epi-beta-Santalol	0.36
61.021	Cyclocopacamphan-12-ol epimer A	0.52
61.420	cis-beta-Santalol	1.82
61.637	Unidentified	0.97
61.751	cis-alpha-trans-Bergamotol	0.40
61.932	Unidentified	0.19
62.023	Unidentified	0.23
62.275	trans-Nuciferol	0.53
62.376	Unidentified	0.57
62.633	cis-Lanceol	2.16
62.878	Unidentified	0.27
63.353	cis-alpha-Santalol acetate	0.10
63.780	alpha-cis-trans-Bergamotol	0.10
63.960	Unidentified	0.02
64.259	Lanceol isomer	0.16
64.560	Dihydroisocaryophyllene epoxide isomer II	0.04
64.967	Unidentified	0.01
65.436	Unidentified Santalol analog	0.03
65.884	Unidentified	0.02
66.023	Unidentified	0.04
66.216	Unidentified	0.02
66.476	Unidentified	0.01
66.901	Unidentified	0.07
67.859	Unidentified	0.03
68.354	Unidentified	0.02
68.957	Unidentified	0.01
71.094	Unidentified	0.01
72.252	Unidentified	0.01
79.230	Methyl Cinnamate	0.05
105.331	Unidentified	0.03
106.886	Unidentified	0.01
		100.00