

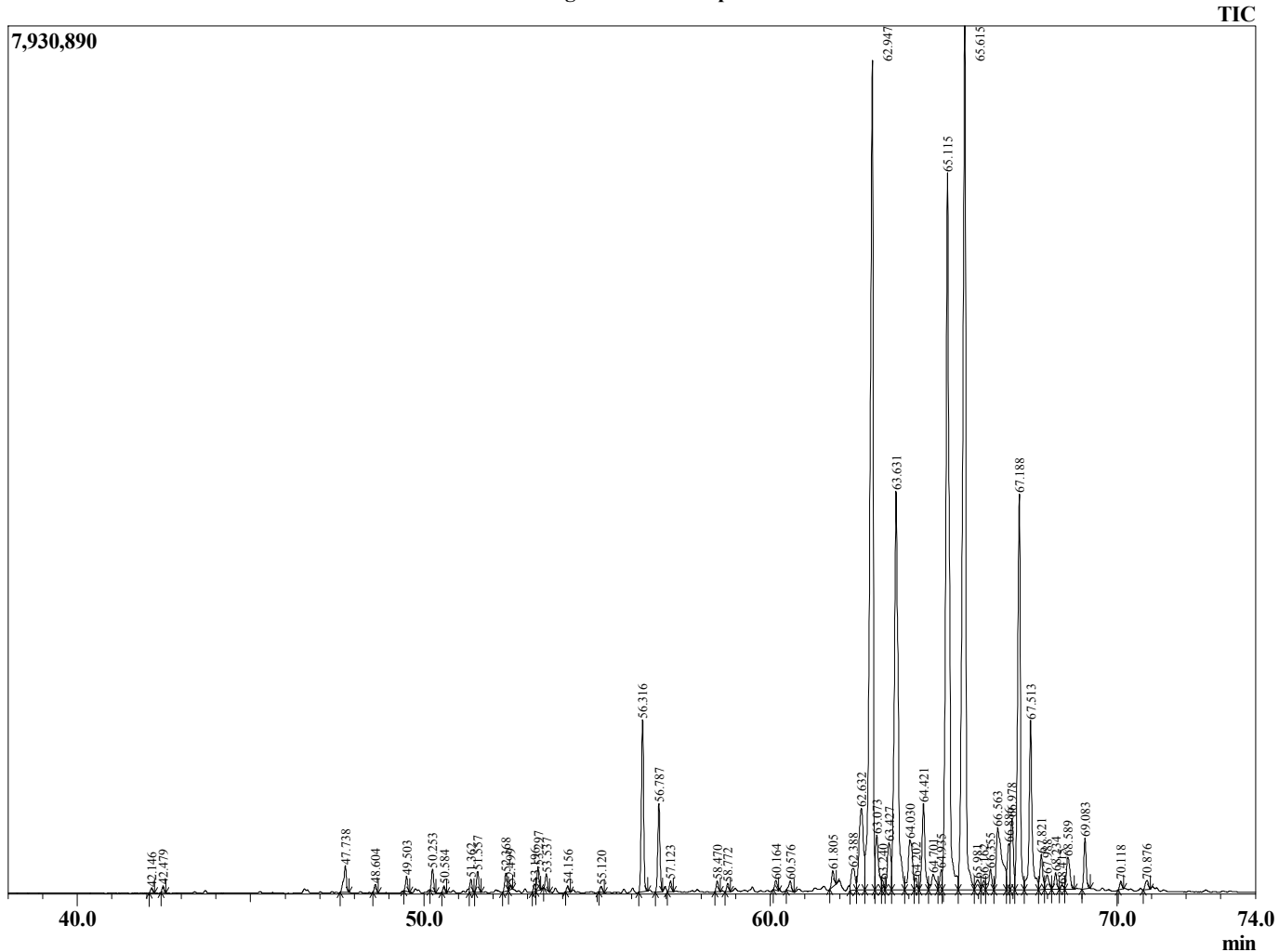
Sample Information

Analyzed : 10/26/2017 1:41:01 AM
 Sample Type : Essential Oil
 Sample Name I : Santalum spicatum

Sandalwood
 Lot# AUF3-FW
 Country: Australia



Chromatogram Santalum spicatum



| R.Time | Name | Area% |
|--------|---------------------------------|--------|
| 42.146 | Elemene <delta> | 0.06 |
| 42.479 | Santalal <alpha> | 0.09 |
| 47.738 | Santalene <alpha> | 0.50 |
| 48.604 | Bergamotene <trans-alpha> | 0.11 |
| 49.503 | Santalene <beta-, epi-> | 0.21 |
| 50.253 | Santalene <beta> | 0.31 |
| 50.584 | Acoradiene <beta> | 0.09 |
| 51.362 | Curcumene <gamma> | 0.19 |
| 51.557 | Ar-Curcumene | 0.30 |
| 52.368 | Sandalwood Unidentified | 0.28 |
| 52.499 | Sandalwood Unidentified | 0.06 |
| 53.196 | Bisabolene <beta> | 0.10 |
| 53.297 | Curcumene <beta> | 0.35 |
| 53.537 | Sesquicineole | 0.23 |
| 54.156 | Sesquiphellandrene <beta-> | 0.08 |
| 55.120 | Bisabolene isomer | 0.09 |
| 56.316 | Nerolidol <trans> | 2.60 |
| 56.787 | Dendalarasin | 1.32 |
| 57.123 | Sandalwood Unidentified | 0.15 |
| 58.470 | Sandalwood Unidentified | 0.16 |
| 58.772 | Sandalwood Unidentified | 0.12 |
| 60.164 | Sandalwood Unidentified | 0.18 |
| 60.576 | Acorenol <alpha> | 0.19 |
| 60.631 | Sandalwood Unidentified | 0.27 |
| 61.805 | Bulnesol | 0.59 |
| 62.388 | Bisabolol <beta> | 2.39 |
| 62.632 | Santalol <Z-alpha> | 17.85 |
| 63.073 | Sandalwood Unidentified | 1.18 |
| 63.240 | Sandalwood Unidentified | 0.14 |
| 63.427 | Sandalwood Unidentified | 1.09 |
| 63.631 | Bisabolol <alpha> | 10.06 |
| 64.030 | Sandalwood Unidentified | 1.46 |
| 64.202 | Sandalwood Unidentified | 0.19 |
| 64.421 | Santalol <Z-epi-beta> | 1.73 |
| 64.701 | Bergamotol <(Z)-, alpha-trans-> | 0.49 |
| 64.935 | Sandalwood Unidentified | 0.31 |
| 65.115 | Farnesol | 16.59 |
| 65.615 | Nuciferol <Z> | 18.63 |
| 65.981 | Sandalwood Unidentified | 0.28 |
| 66.162 | Sandalwood Unidentified | 0.17 |
| 66.355 | Santalol <Z-beta> | 0.44 |
| 66.563 | Sandalwood Unidentified | 2.37 |
| 66.886 | Sandalwood Unidentified | 0.77 |
| 66.978 | Santalol acetate isomer | 1.35 |
| 67.188 | Nuciferol <E> | 7.21 |
| 67.513 | Lanceol <cis> | 3.41 |
| 67.821 | Santalol acetate isomer | 0.64 |
| 67.988 | Sandalwood Unidentified | 0.38 |
| 68.234 | Sandalwood Unidentified | 0.31 |
| 68.415 | Lanceol isomer | 0.08 |
| 68.589 | Sandalwood Unidentified | 0.77 |
| 69.083 | Lanceol isomer | 0.77 |
| 70.118 | Sandalwood Unidentified | 0.12 |
| 70.876 | Sandalwood Unidentified | 0.20 |
| | | 100.00 |