

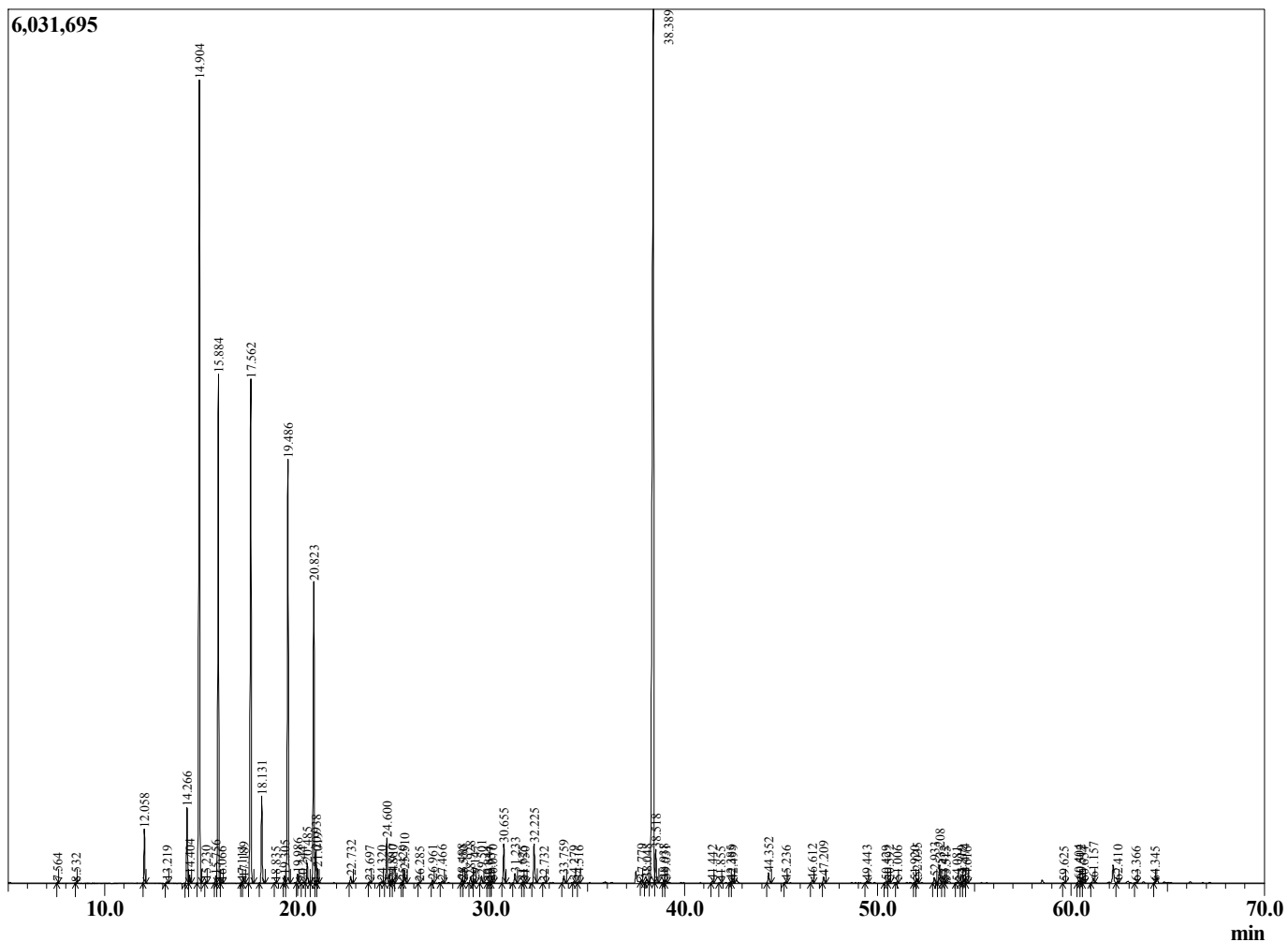
Sample Information

Sample Type : Essential Oil  
 Sample Name : Picea mariana  
 Injection Volume : 0.10

Spruce Black  
 Lot# CAD26-DC  
 Country: Canada



Chromatogram Picea mariana



R.Time	Name	Area%
7.564	Toluene	0.01
8.532	Hexanal	0.01
12.058	Santene	0.97
13.219	Unidentified	0.05
14.266	Tricyclene	1.48
14.404	alpha-Thujene	0.16
14.904	alpha-Pinene	17.99
15.230	beta-Fenchene	0.02
15.756	alpha-Fenchene	0.15
15.884	Camphene	10.61
16.066	Thuja-2,4(10)diene	0.02
17.111	Unidentified	0.03
17.189	Sabinene	0.10
17.562	beta-Pinene	11.01
18.131	Myrcene	1.81
18.835	Terpinene isomer	0.02
19.305	alpha-Phellandrene	0.15
19.486	delta-3-Carene	9.66
19.986	alpha-Terpinene	0.20
20.244	Unidentified	0.02
20.485	para-Cymene	0.45
20.823	Limonene	6.78
20.938	beta-Phellandrene	0.69
21.019	1,8-Cineole	0.30
22.732	gamma-Terpinene	0.16
23.697	Unidentified	0.03
24.320	Isoterpinolene	0.03
24.600	Terpinolene	1.04
24.880	Unidentified	0.03
24.917	para-Cymenene	0.08
25.420	Unidentified	0.03
25.510	Linalool	0.34
26.285	Unidentified	0.01
26.961	alpha-Fenchol	0.06
27.466	alpha-Campholenal	0.06
28.488	trans-Pinocarveol	0.08
28.550	Unidentified	0.02
28.928	Camphor	0.16
29.147	Unidentified	0.03
29.501	trans-beta-Terpineol	0.18
29.844	trans-Pinocamphone	0.02
29.957	Pinocarvone	0.02
30.070	Isoborneol	0.05
30.655	Borneol	0.96
31.233	Terpinen-4-ol	0.26
31.625	para-Cymen-8-ol	0.03
31.750	Unidentified	0.03
32.225	alpha-Terpineol	1.03
32.732	Unidentified	0.03
33.759	alpha-Fenchyl acetate	0.19
34.279	Citronellol	0.03
34.516	Thymol methyl ether	0.03
37.779	trans-Chrysanthenyl acetate	0.04
38.048	Unidentified	0.10
38.389	Bornyl acetate	29.00
38.518	Isobornyl acetate	0.76

R.Time	Name	Area%
38.938	Unidentified	0.07
39.031	trans-Pinocarvyl acetate	0.05
41.442	Unidentified	0.05
41.855	Unidentified	0.03
42.385	alpha-Terpinyl acetate	0.04
42.499	Citronellyl acetate	0.05
44.352	Geranyl acetate	0.29
45.236	beta-Elemene	0.03
46.612	Junipene	0.08
47.209	trans-beta-Caryophyllene	0.15
49.443	alpha-Humulene	0.05
50.429	10-beta-H-Cadina-1(6),4-diene	0.04
50.592	trans-Cadina-1(6),4-diene	0.05
51.006	Germacrene D	0.04
51.920	Unidentified	0.02
52.035	alpha-Murolene	0.12
52.933	gamma-Cadinene	0.14
53.208	delta-Cadinene	0.50
53.422	cis-Calamenene	0.05
53.515	Unidentified	0.02
54.081	trans-Cadina-1,4-diene	0.02
54.319	alpha-Cadinene	0.03
54.474	(E)-alpha-Bisabolene	0.08
54.616	Unidentified	0.02
59.625	Unidentified	0.02
60.404	tau-Cadinol	0.07
60.512	epi-alpha-Cadinol	0.08
60.654	delta-Cadinol	0.02
61.157	alpha-Cadinol	0.13
62.410	Unidentified	0.04
63.366	Unidentified	0.02
64.345	Unidentified	0.02
		100.00