

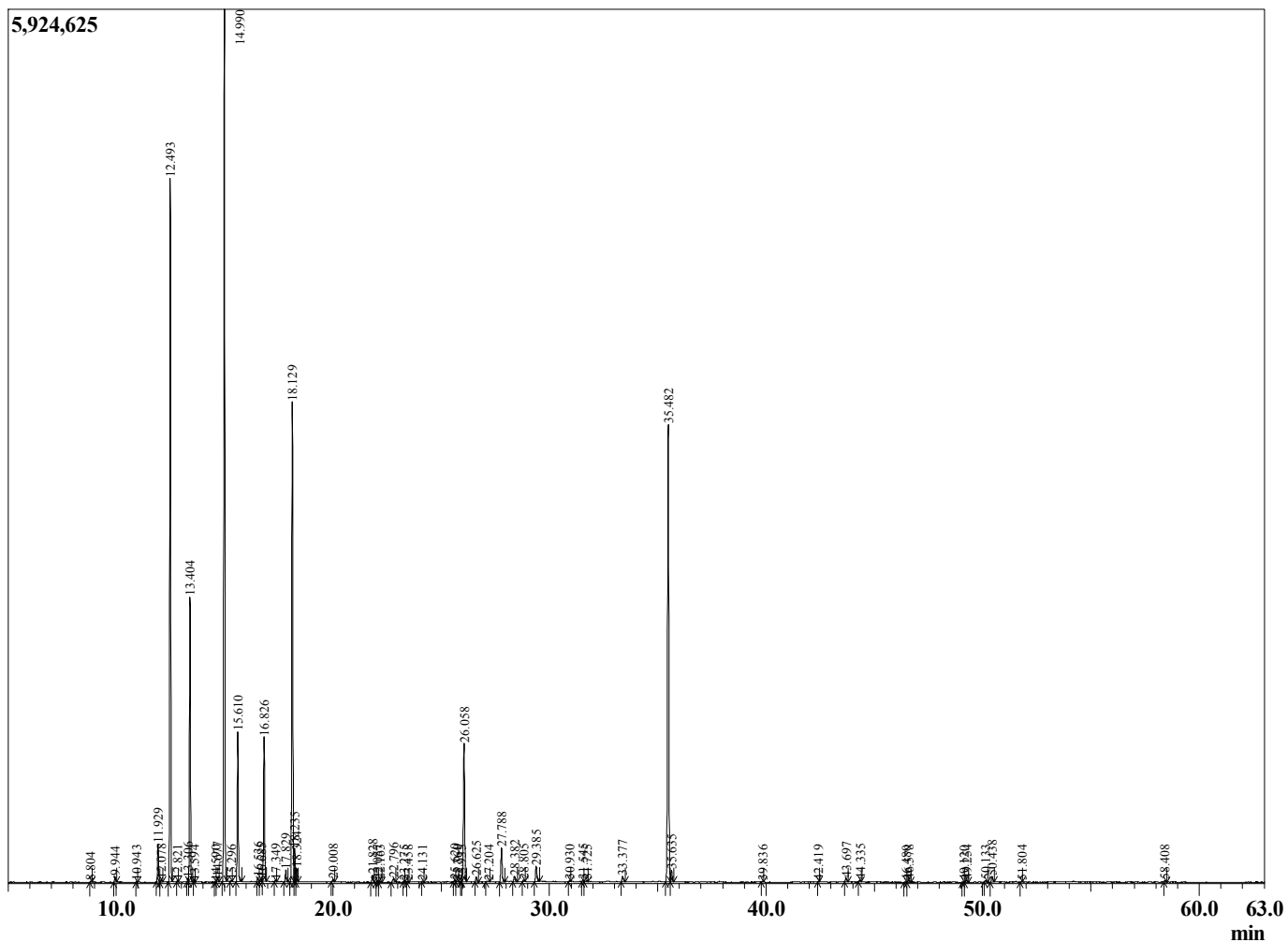
Sample Information

Sample Type : Essential Oil  
 Sample Name : Picea glauca

Spruce White  
 Lot# CAR02-RW  
 Country: Canada



Chromatogram Picea glauca



R.Time	Name	Area%
8.804	Hex-3(Z)-enol	0.02
9.944	Santene	0.15
10.943	Unidentified	0.02
11.929	Tricyclene	0.93
12.078	alpha-Thujene	0.07
12.493	alpha-Pinene	17.73
12.821	beta-Fenchene	0.03
13.306	alpha-Fenchene	0.09
13.404	Camphene	7.47
13.594	Unidentified	0.02
14.590	Unidentified	0.03
14.677	Sabinene	0.13
14.990	beta-Pinene	23.83
15.296	Unidentified	0.03
15.610	Myrcene	4.07
16.536	Pseudolimonene	0.12
16.685	alpha-Phellandrene	0.08
16.826	delta-3-Carene	4.05
17.349	Terpinolene	0.05
17.829	para-Cymene	0.34
18.129	Limonene	14.16
18.235	beta-Phellandrene	0.92
18.324	1,8-Cineole	0.40
20.008	gamma-Terpinene	0.07
21.828	Terpinolene	0.23
22.057	Fenchone	0.04
22.163	para-Cymenene	0.05
22.796	Linalool	0.13
23.275	Unidentified	0.01
23.458	Unidentified	0.03
24.131	alpha-Fenchol	0.04
25.620	trans-Pinocarveol	0.06
25.760	Unidentified	0.02
25.935	Unidentified	0.02
26.058	Camphor	4.61
26.625	trans-beta-Terpineol	0.17
27.204	Unidentified	0.04
27.788	Borneol	1.19
28.382	Terpinen-4-ol	0.21
28.805	para-Cymen-8-ol	0.07
29.385	alpha-Terpineol	0.59
30.930	alpha-Fenchyl acetate	0.03
31.545	Citronellol	0.07
31.725	Thymol methyl ether	0.06
33.377	Piperitone	0.19
35.482	Bornyl acetate	16.13
35.635	Isobornyl acetate	0.42
39.836	Unidentified	0.03
42.419	Unidentified	0.02
43.697	Junipene	0.14
44.335	beta-Caryophyllene	0.07
46.480	trans-beta-Farnesene	0.03
46.578	alpha-Humulene	0.07
49.120	Unidentified	0.02
49.254	alpha-Murolene	0.07
50.133	gamma-Cadinene	0.06

R.Time	Name	Area%
50.438	delta-Cadinene	0.21
51.804	Unidentified	0.02
58.408	alpha-Cadinol	0.06
		100.00