

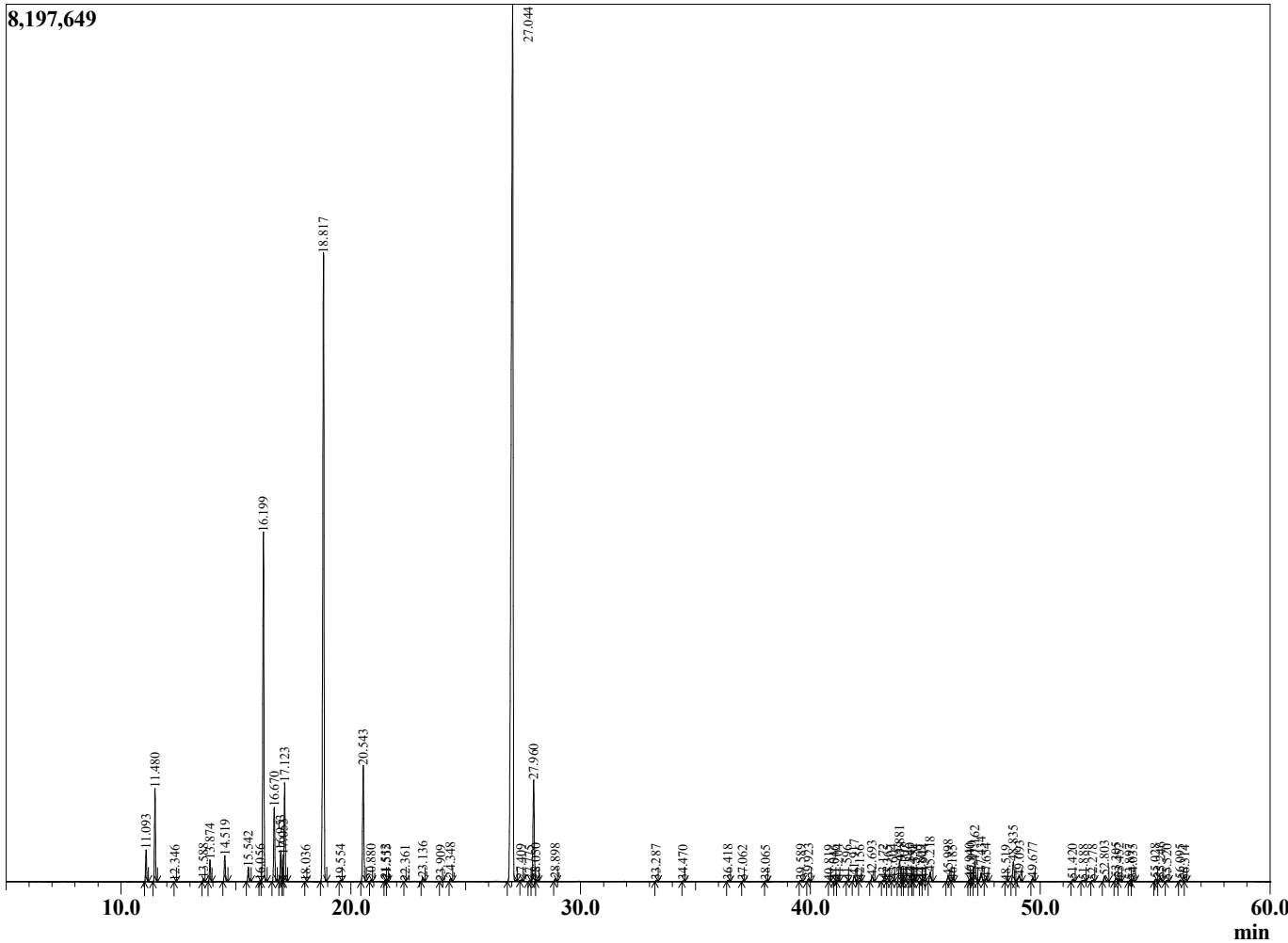
Sample Information

Sample Type : Essential Oil
 Sample Name : Melaleuca alternifolia
 Injection Volume : 0.10

Tea Tree
 Lot# AUX44-XH
 Country: Australia



Chromatogram Melaleuca alternifolia



R.Time	Name	Area%
3.801	2-Methylbutanal	0.02
11.093	alpha-Thujene	0.79
11.480	alpha-Pinene	2.34
12.346	Camphene	0.01
13.588	Sabinene	0.08
13.874	beta-Pinene	0.61
14.519	Myrcene	0.73
15.542	alpha-Phellandrene	0.42
16.056	1,4-Cineole	0.03
16.199	alpha-Terpinene	10.26
16.670	para-Cymene	2.18
16.953	Limonene	0.90
17.053	beta-Phellandrene	0.65
17.123	1,8-Cineole	2.89
18.036	trans-beta-Ocimene	0.01
18.817	gamma-Terpinene	20.72
19.554	trans-Sabinene hydrate	0.03
20.543	Terpinolene	3.59
20.880	para-Cymenene	0.05
21.512	Linalool	0.06
21.555	cis-Sabinene hydrate	0.03
22.361	Unidentified	0.01
23.136	cis-para-Menth-2-en-1-ol	0.13
23.909	Terpin-3-en-1-ol	0.01
24.348	trans-para-Menth-2-en-1-ol	0.11
27.044	Terpinen-4-ol	43.21
27.409	para-Cymen-8-ol	0.03
27.775	Unidentified	0.02
27.960	alpha-Terpineol	3.43
28.050	cis-Piperitol	0.05
28.898	trans-Piperitol	0.09
33.287	cis-Ascaridol glycol	0.03
34.470	trans-Ascaridol glycol	0.02
36.418	Unidentified	0.05
37.062	Unidentified	0.02
38.065	alpha-Cubebene	0.02
39.589	Isoledene	0.05
39.923	alpha-Copaene	0.10
40.819	beta-Elemene	0.01
41.046	Unidentified	0.01
41.204	Unidentified	0.03
41.596	Methyleugenol	0.01
41.917	alpha-Gurjunene	0.23
42.156	beta-Maaliene	0.02
42.693	beta-Caryophyllene	0.20
43.172	gamma-Maaliene	0.05
43.365	Unidentified	0.01
43.604	alpha-Maaliene	0.05
43.881	beta-Copaene	0.77
43.978	Unidentified	0.10
44.102	Unidentified	0.04
44.340	alpha-Guaiene	0.11
44.451	Unidentified	0.02
44.554	trans-Murrola-3,5-diene	0.07
44.809	Unidentified	0.02
44.944	alpha-Humulene	0.05

R.Time	Name	Area%
45.218	Aromadendrene	0.36
45.998	trans-Cadina-1(6),4-diene	0.25
46.185	gamma-Murolene	0.02
46.940	Unidentified	0.08
47.010	beta-Selinene	0.18
47.162	Viridiflorene	0.80
47.434	Bicyclogermacrene	0.38
47.654	alpha-Murolene	0.11
48.519	Unidentified	0.01
48.835	delta-Cadinene	0.77
49.093	trans-Calamenene + Zonarene	0.28
49.677	trans-Cadina-1,4-diene	0.12
51.420	Unidentified	0.07
51.888	Palustrol	0.06
52.278	Spathulenol	0.04
52.803	Globulol	0.24
53.305	Viridiflorol	0.15
53.452	Guaiol	0.11
53.897	Unidentified	0.04
54.035	Rosifoliol	0.05
55.028	Unidentified	0.09
55.246	1-epi-Cubenol	0.13
55.520	Unidentified	0.04
56.095	Epicubenol	0.07
56.314	delta-Cadinol	0.02
		100.00