

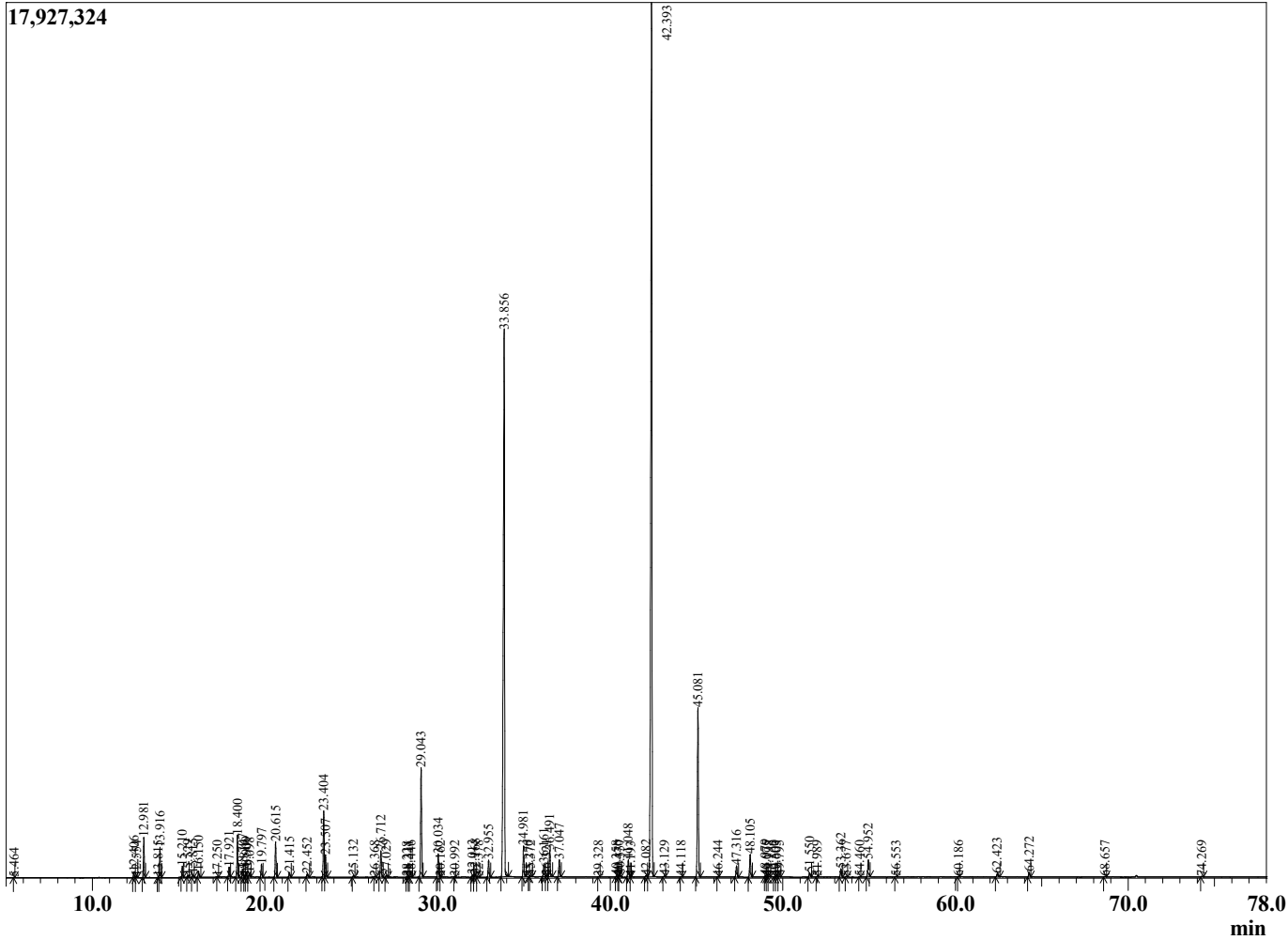
Sample Information

Sample Type : Essential Oil
 Sample Name : Thymus vulgaris
 Injection Volume : 0.10

Thyme Geraniol
 Lot# FRE4-EE
 Country: France



Chromatogram Thymus vulgaris



| R.Time | Name | Area% |
|--------|----------------------------|-------|
| 5.464 | 1-Pentanol | 0.00 |
| 12.406 | Tricyclene | 0.18 |
| 12.554 | alpha-Thujene | 0.04 |
| 12.981 | alpha-Pinene | 1.22 |
| 13.815 | alpha-Fenchene | 0.02 |
| 13.916 | Camphene | 0.93 |
| 15.210 | Sabinene | 0.35 |
| 15.529 | beta-Pinene | 0.05 |
| 15.815 | 6-Methyl hept-5-en-2-one | 0.09 |
| 16.150 | Myrcene | 0.20 |
| 17.250 | alpha-Phellandrene | 0.02 |
| 17.921 | alpha-Terpinene | 0.34 |
| 18.400 | para-Cymene | 1.40 |
| 18.707 | Limonene | 0.26 |
| 18.816 | beta-Phellandrene | 0.05 |
| 18.909 | 1,8-Cineole | 0.16 |
| 19.098 | (Z)-beta-Ocimene | 0.13 |
| 19.797 | (E)-beta-Ocimene | 0.43 |
| 20.615 | gamma-Terpinene | 1.22 |
| 21.415 | trans-Sabinene hydrate | 0.18 |
| 22.452 | Terpinolene | 0.13 |
| 23.404 | Linalool | 2.36 |
| 23.507 | cis-Sabinene hydrate | 0.79 |
| 25.132 | cis-para-Menth-2-en-1-ol | 0.07 |
| 26.368 | trans-para-Menth-2-en-1-ol | 0.03 |
| 26.712 | Camphor | 0.98 |
| 27.029 | Citronellal | 0.07 |
| 28.228 | Unidentified | 0.01 |
| 28.311 | Unidentified | 0.01 |
| 28.446 | Borneol | 0.03 |
| 29.043 | Terpinen-4-ol | 4.29 |
| 30.034 | alpha-Terpineol | 0.90 |
| 30.162 | Unidentified | 0.01 |
| 30.992 | Unidentified | 0.01 |
| 32.013 | Nerol | 0.08 |
| 32.168 | Citronellol | 0.09 |
| 32.378 | Thymol methyl ether | 0.03 |
| 32.955 | Neral | 0.65 |
| 33.856 | Geraniol | 26.83 |
| 34.981 | Geranial | 1.16 |
| 35.270 | Unidentified | 0.01 |
| 35.372 | Citronellyl formate | 0.03 |
| 36.161 | Bornyl acetate | 0.53 |
| 36.321 | Isobornyl acetate | 0.05 |
| 36.491 | Thymol | 1.02 |
| 37.047 | Carvacrol+Geranyl formate | 0.68 |
| 39.328 | Unidentified | 0.02 |
| 40.358 | alpha-Cubebene | 0.02 |
| 40.470 | Unidentified | 0.01 |
| 40.557 | Eugenol | 0.07 |
| 41.048 | Neryl acetate | 0.69 |
| 41.193 | Unidentified | 0.00 |
| 42.082 | Unidentified | 0.06 |
| 42.393 | Geranyl acetate | 40.37 |
| 43.129 | beta-Elementene | 0.03 |
| 44.118 | cis-beta-Caryophyllene | 0.02 |

| R.Time | Name | Area% |
|--------|--------------------------|--------|
| 45.081 | trans-beta-Caryophyllene | 7.21 |
| 46.244 | Aromadendrene | 0.02 |
| 47.316 | alpha-Humulene | 0.48 |
| 48.105 | Geranyl propanoate | 0.92 |
| 48.979 | Unidentified | 0.03 |
| 49.075 | Unidentified | 0.01 |
| 49.198 | Unidentified | 0.02 |
| 49.500 | Unidentified | 0.02 |
| 49.603 | Unidentified | 0.02 |
| 49.795 | Bicyclogermacrene | 0.04 |
| 51.550 | Citronellyl butyrate | 0.18 |
| 51.989 | Unidentified | 0.02 |
| 53.362 | Geranyl butyrate | 0.36 |
| 53.677 | trans-Nerolidol | 0.03 |
| 54.460 | Unidentified | 0.01 |
| 54.952 | Caryophyllene oxide | 0.76 |
| 56.553 | Humulene epoxide II | 0.02 |
| 60.186 | Unidentified | 0.02 |
| 62.423 | (2E,6E)-Farnesol | 0.16 |
| 64.272 | Geranyl hexanoate | 0.19 |
| 68.657 | Unidentified | 0.02 |
| 74.269 | Unidentified | 0.03 |
| | | 100.00 |